

**BATHYMETRIC MAPPING**  
**WELLS HYDROELECTRIC PROJECT**  
**FERC NO. 2149**

May 2006

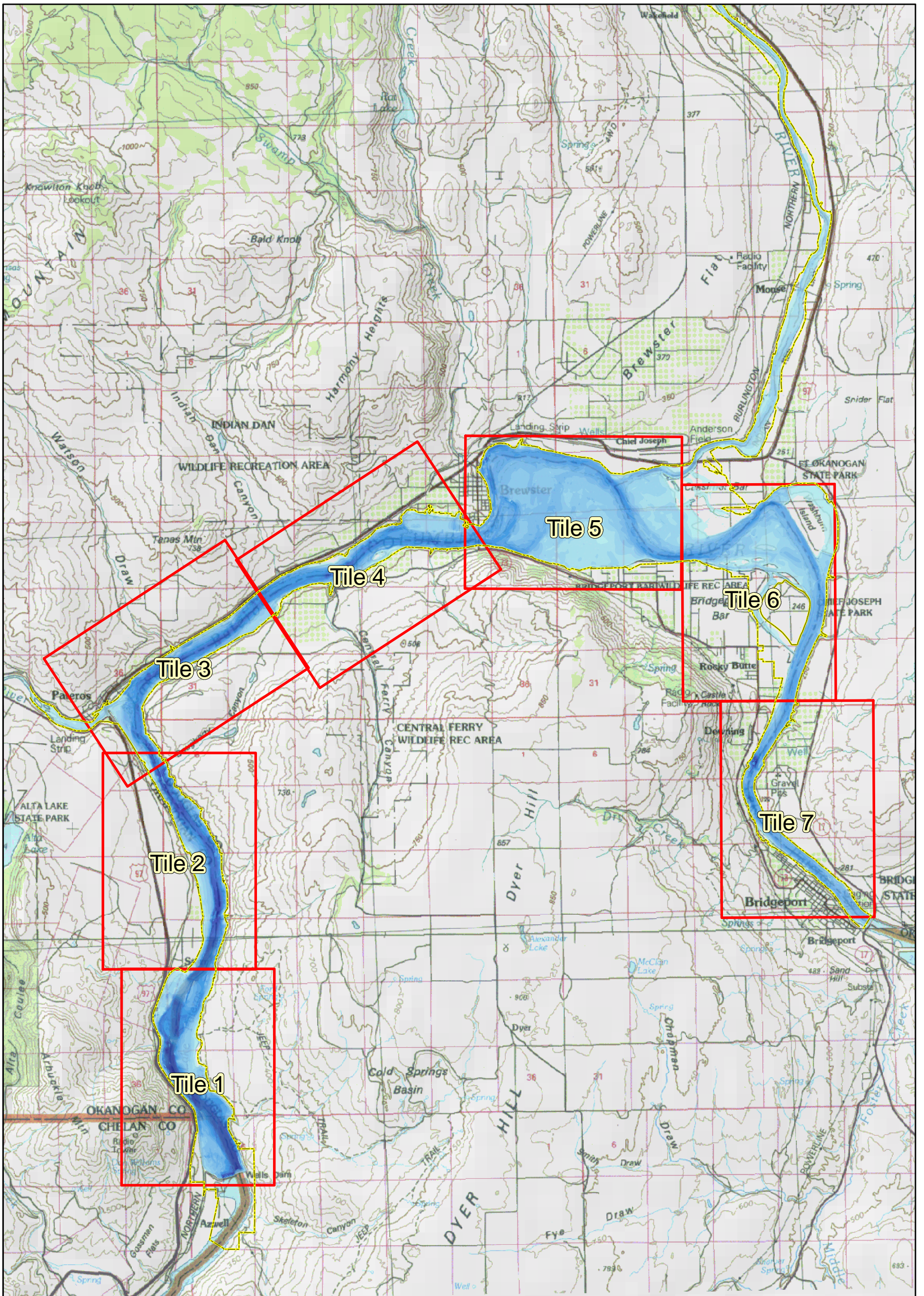
Prepared by:

Public Utility District No. 1 of Douglas County  
East Wenatchee, Washington

## **Bathymetric Mapping**

In March 2005, Douglas PUD contracted with GeoEngineers to conduct a detailed bathymetric survey of the Wells Reservoir and tailrace using multibeam sonar and GPS technology. Contour maps of the reservoir bottom were produced at 1-foot contour intervals. The bathymetry provides a seamless representation of the riverbed surface. The Bathymetric Mapping will be useful for such things as water temperature modeling, aquatic plant mapping and fish studies throughout the relicensing process.

The bathymetry maps of the Wells Reservoir are included on the following pages. Please note that the intended purpose of the maps is to represent major features of the riverbed surface. The maps should not be used for navigational purposes.



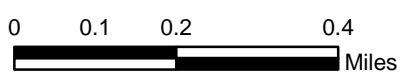
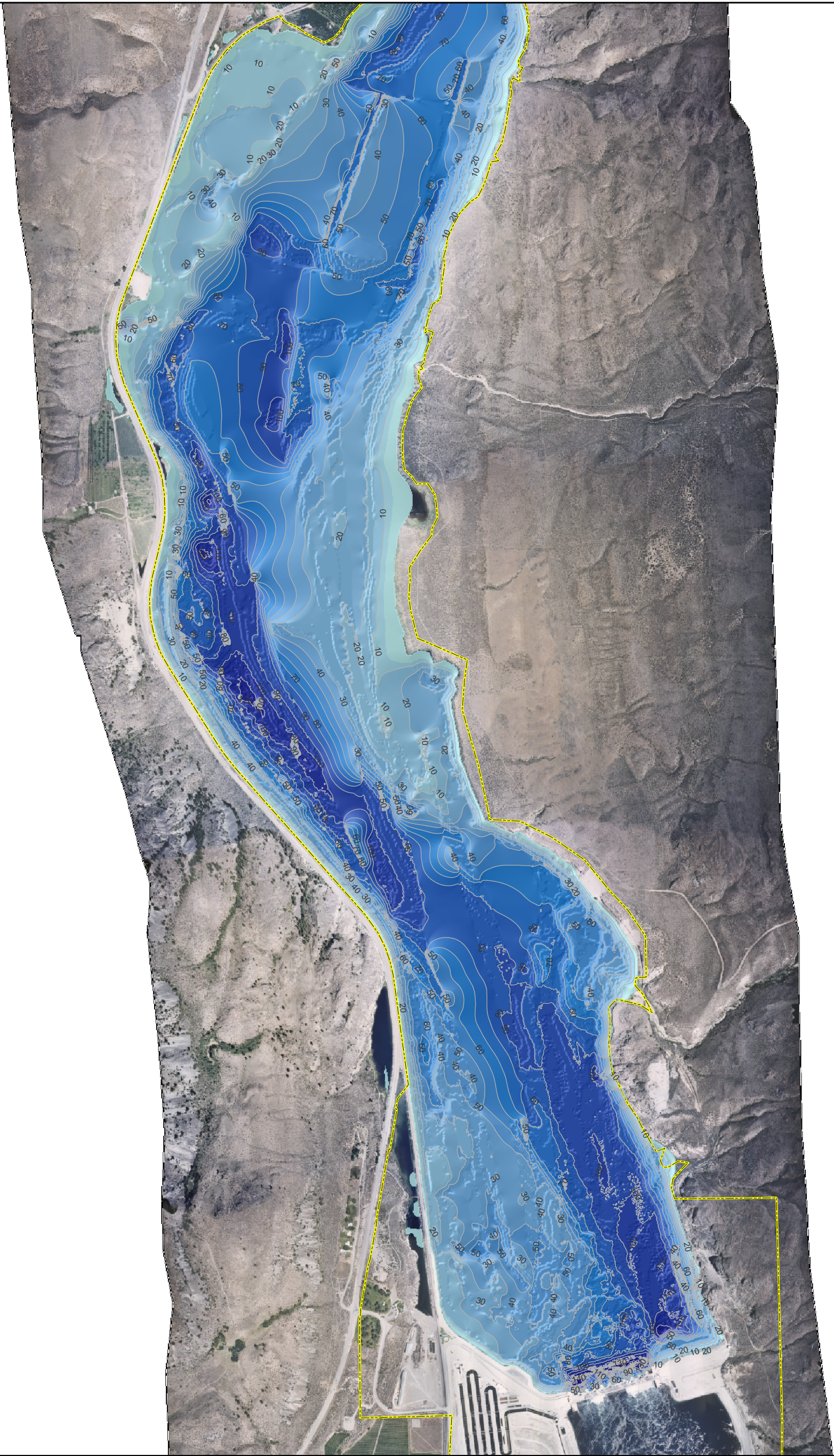
## WELLS RESERVOIR BATHYMETRY

**Legend**

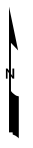
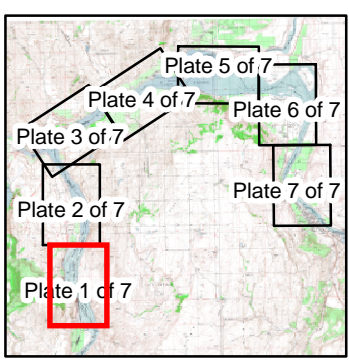
wells_depth	<VALUE>
0-5	61-70
6-10	71-80
11-20	81-90
21-30	91-100
31-40	101-110
41-50	111-120
51-60	121-130
	131-157



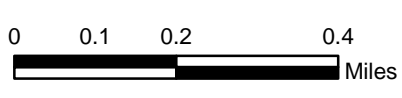
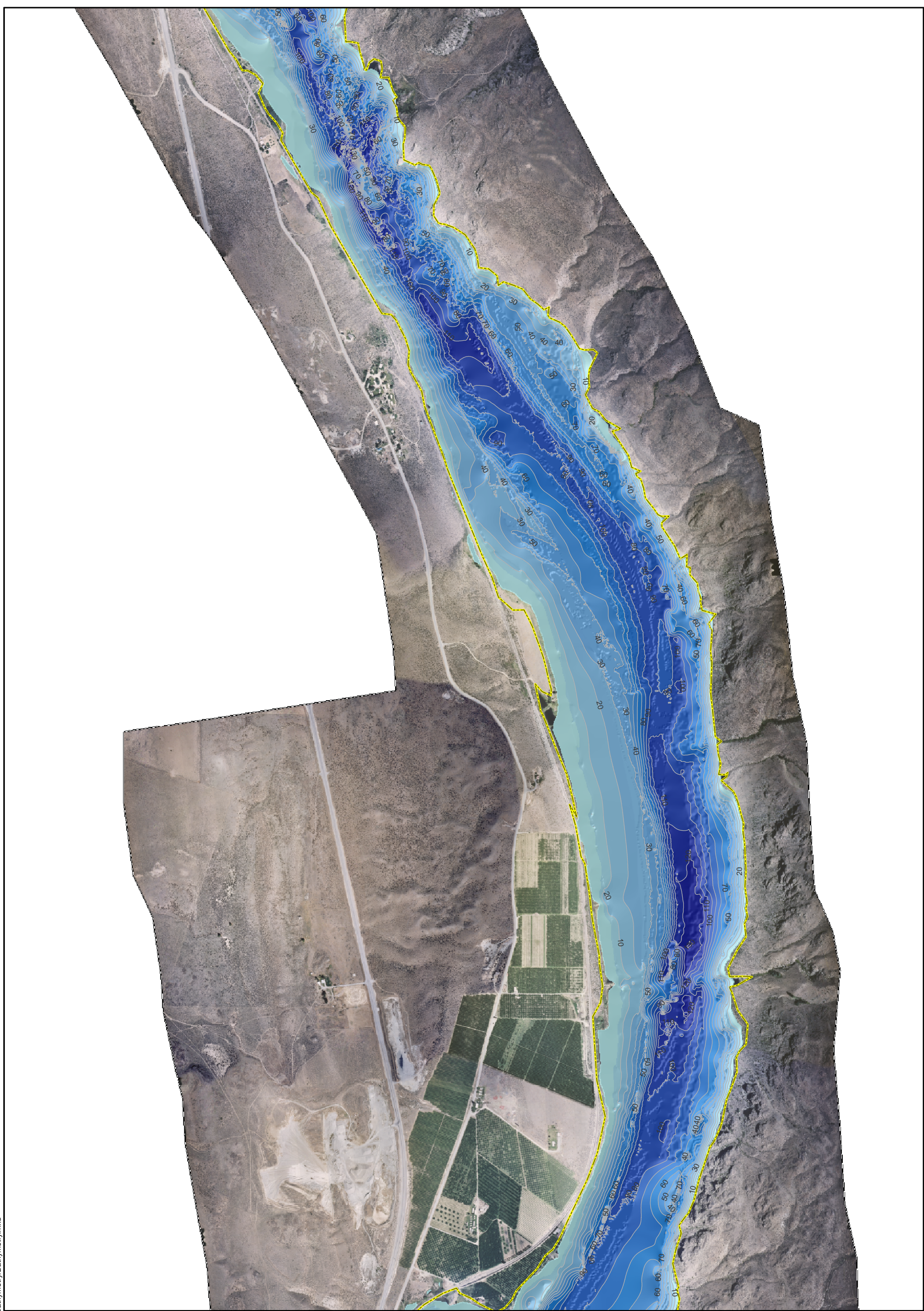
This map is for information purposes. Data were compiled from multiple sources. The data sources do not guarantee these data are accurate or complete. There may have been updates to the data since the publication of this map. The locations of all features shown are approximate.



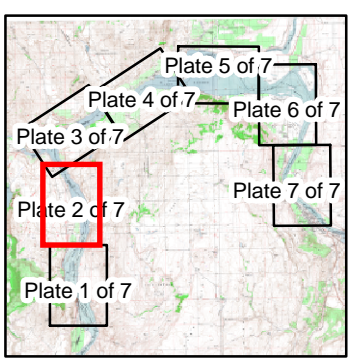
Legend	
wells_depth	61-70
<VALUE>	71-80
0-5	81-90
6-10	91-100
11-20	101-110
21-30	111-120
31-40	121-130
41-50	131-157
51-60	



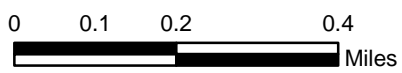
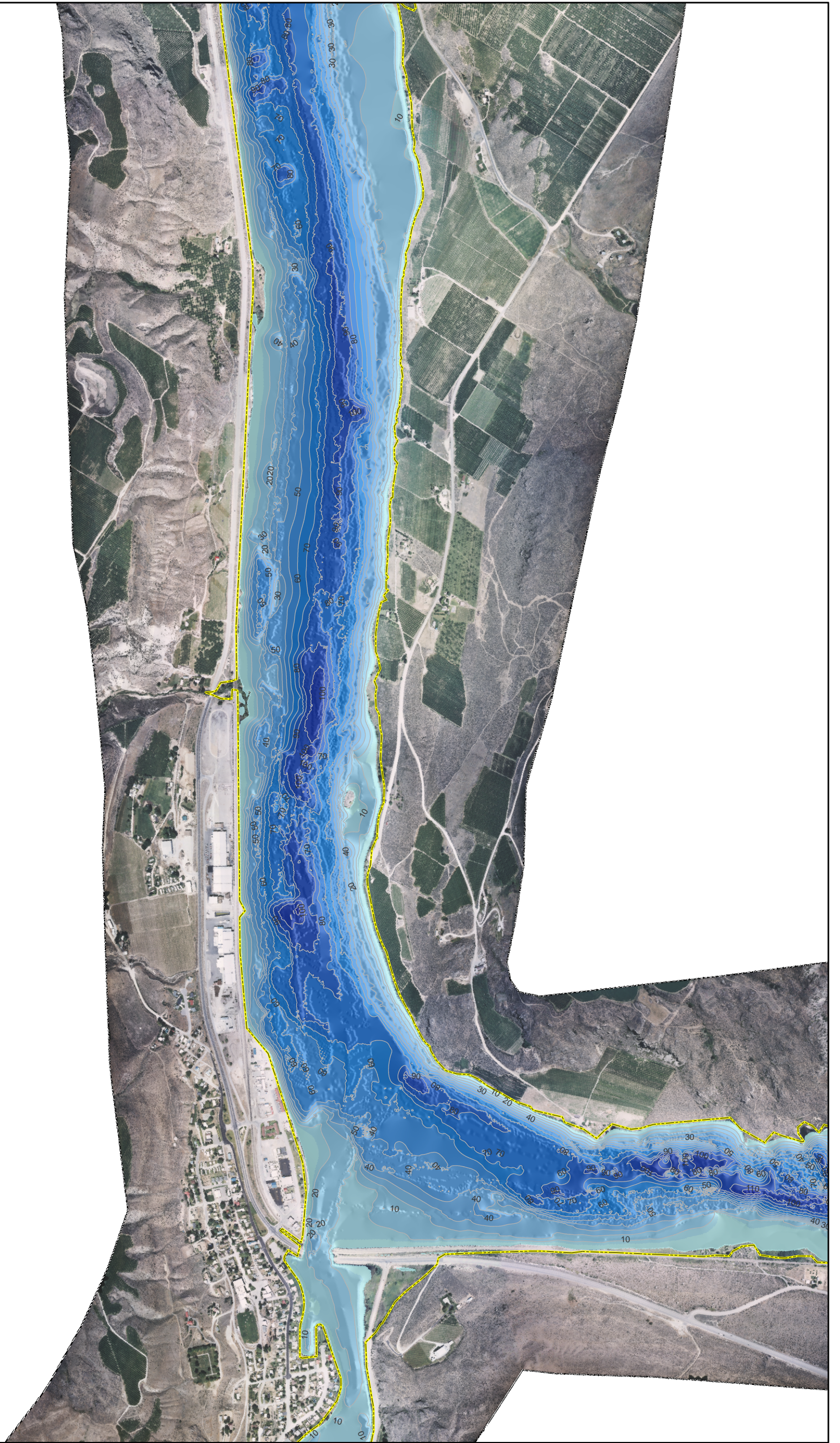
This map is for information purposes. Data were compiled from multiple sources. The data sources do not guarantee these data are accurate or complete. There may have been updates to the data since the publication of this map. The locations of all features shown are approximate.



Legend	
wells_depth	61-70
<VALUE>	71-80
0-5	81-90
6-10	91-100
11-20	101-110
21-30	111-120
31-40	121-130
41-50	131-157
51-60	

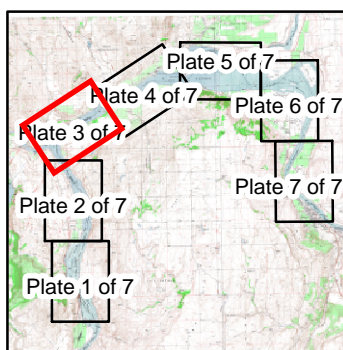


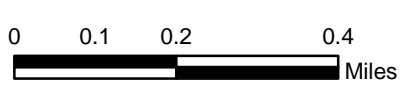
This map is for information purposes. Data were compiled from multiple sources. The data sources do not guarantee these data are accurate or complete. There may have been updates to the data since the publication of this map. The locations of all features shown are approximate.



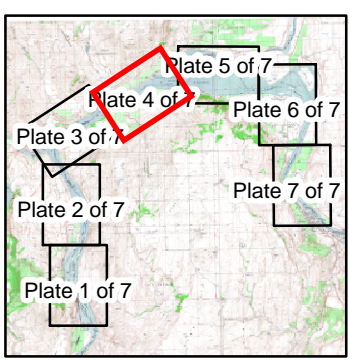
This map is for information purposes. Data were compiled from multiple sources. The data sources do not guarantee these data are accurate or complete. There may have been updates to the data since the publication of this map. The locations of all features shown are approximate.

Legend	
wells_depth	61-70
<VALUE>	71-80
0-5	81-90
6-10	91-100
11-20	101-110
21-30	111-120
31-40	121-130
41-50	131-157
51-60	

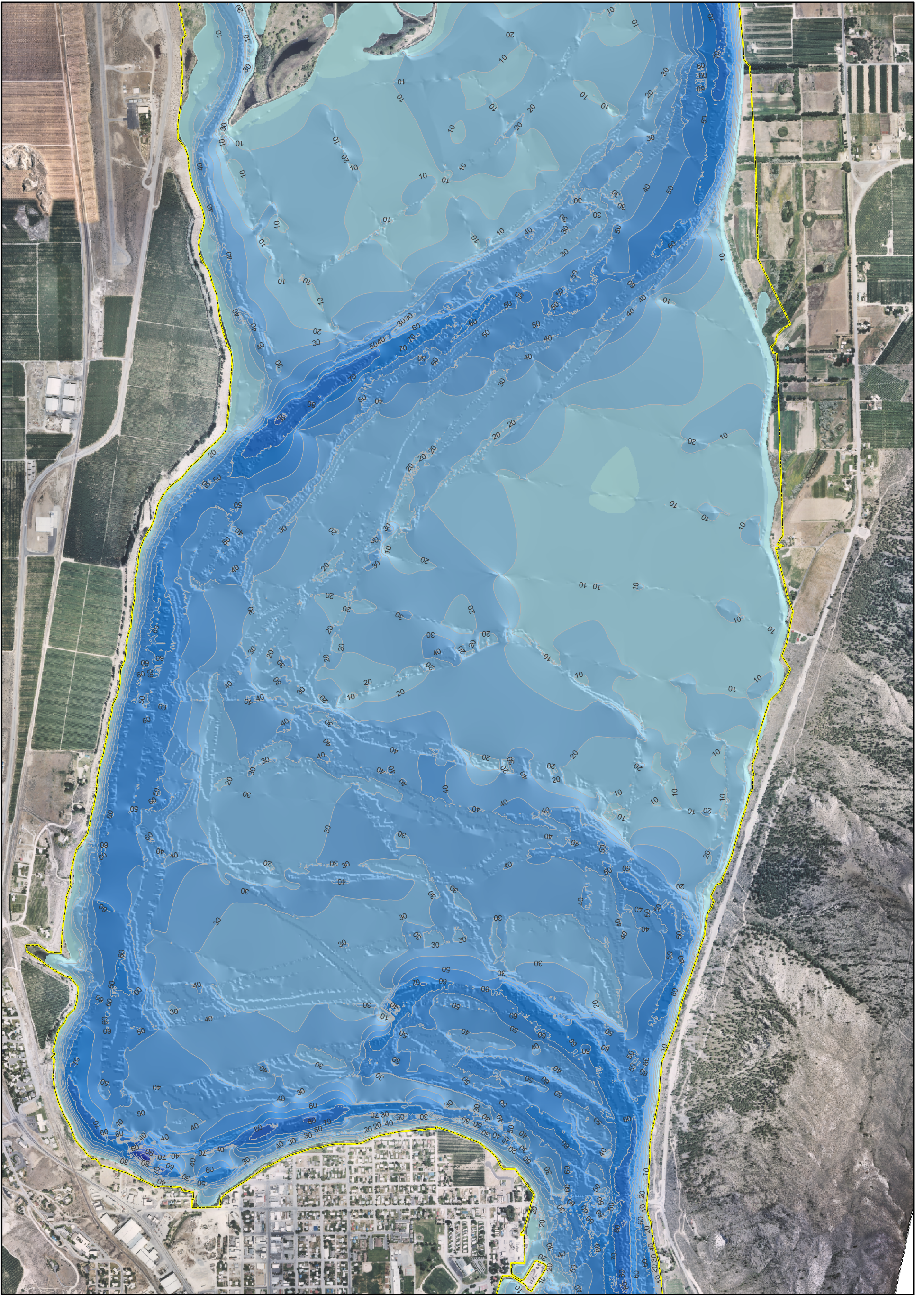




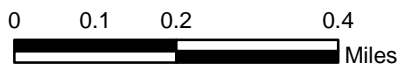
Legend	
wells_depth	61-70
<VALUE>	71-80
0-5	81-90
6-10	91-100
11-20	101-110
21-30	111-120
31-40	121-130
41-50	131-157
51-60	



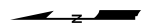
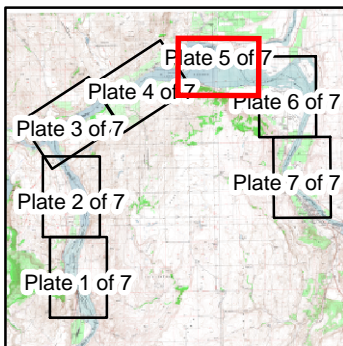
This map is for information purposes. Data were compiled from multiple sources. The data sources do not guarantee these data are accurate or complete. There may have been updates to the data since the publication of this map. The locations of all features shown are approximate.



S:\Data\EARS\District Map Docs\Kreiter\Mapbooks\Bathymetry\Bathymetry.mxd



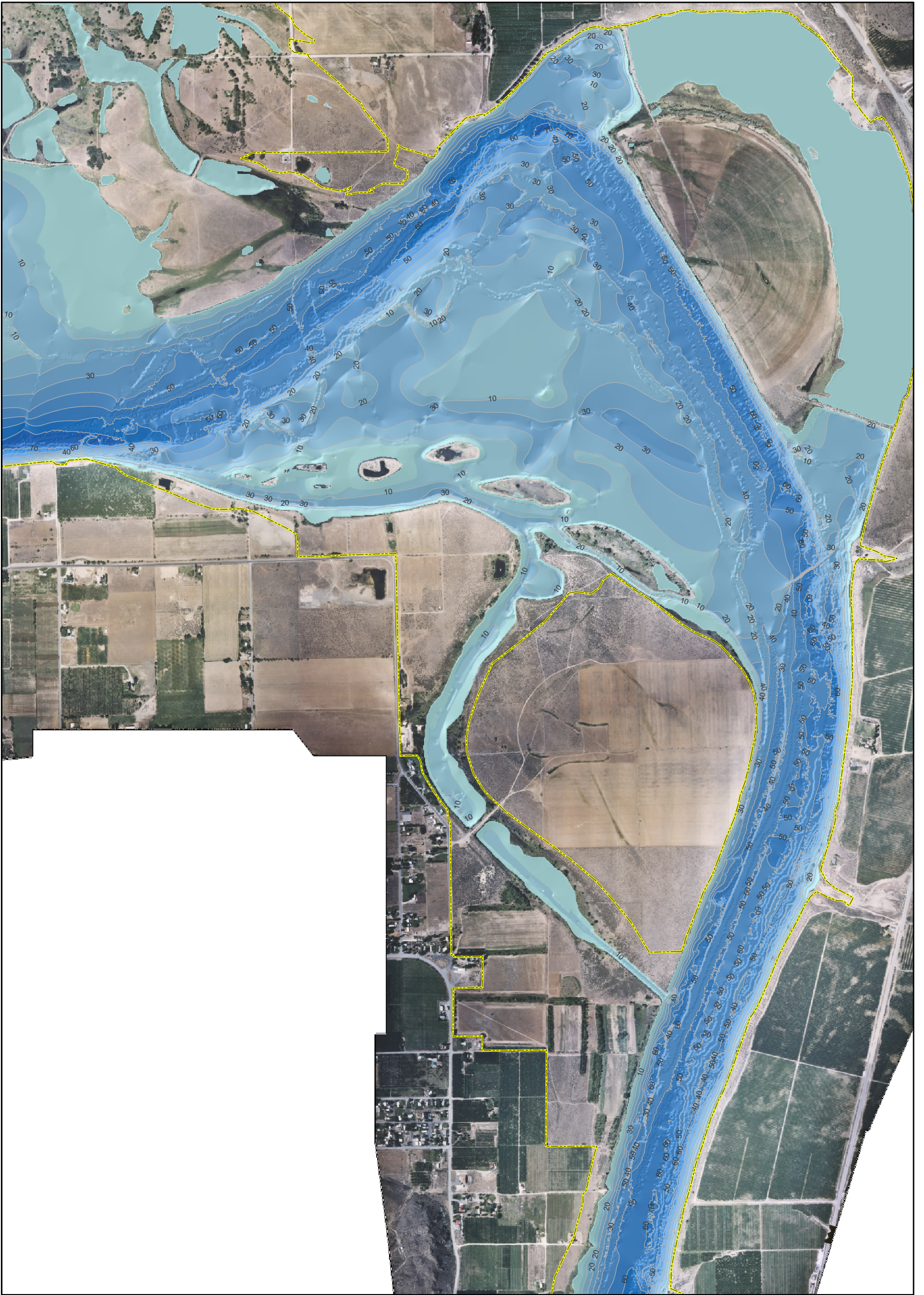
Legend	
wells_depth	61-70
<VALUE>	71-80
0-5	81-90
6-10	91-100
11-20	101-110
21-30	111-120
31-40	121-130
41-50	131-157
51-60	



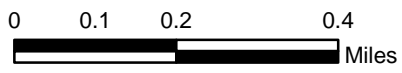
This map is for information purposes. Data were compiled from multiple sources. The data sources do not guarantee these data are accurate or complete. There may have been updates to the data since the publication of this map. The locations of all features shown are approximate.

**Wells Bathymetry**  
**Plate 5 of 7**



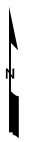
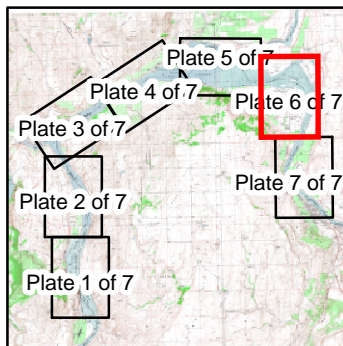


S:\Data\EARS\District Map Docs\Kreiter\Mapbooks\Bathymetry\Bathymetry.mxd

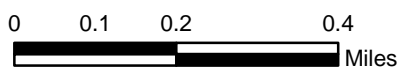
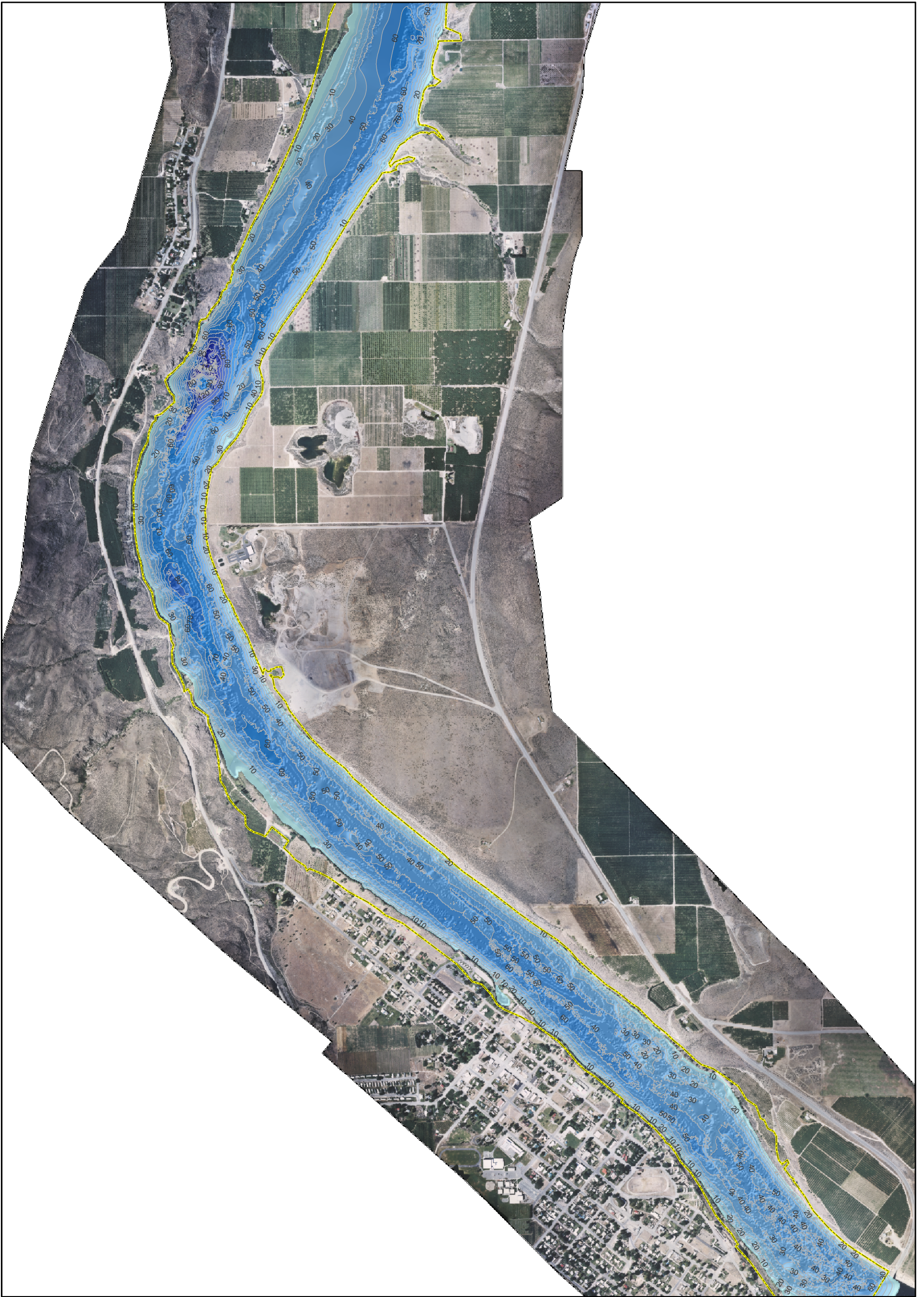


This map is for information purposes. Data were compiled from multiple sources. The data sources do not guarantee these data are accurate or complete. There may have been updates to the data since the publication of this map. The locations of all features shown are approximate.

Legend	
wells_depth	<VALUE>
	0-5
	6-10
	11-20
	21-30
	31-40
	41-50
	51-60
	61-70
	71-80
	81-90
	91-100
	101-110
	111-120
	121-130
	131-157



**Wells Bathymetry**  
**Plate 6 of 7**



This map is for information purposes. Data were compiled from multiple sources. The data sources do not guarantee these data are accurate or complete. There may have been updates to the data since the publication of this map. The locations of all features shown are approximate.

