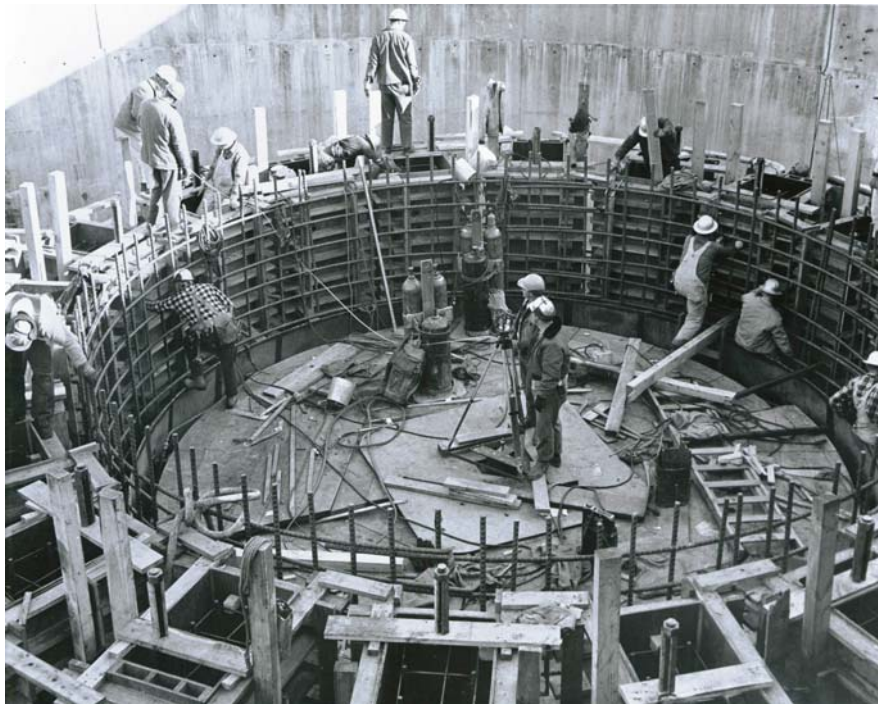


**WELLS HYDROELECTRIC PROJECT
FERC PROJECT NO. 2149**

PRE-APPLICATION DOCUMENT (PAD)

VOLUME 3: Diagrams and Schematics of Project Works

These documents have been removed in accordance with Critical Energy Infrastructure Information (CEII) regulations (18 CFR § 5.30).



Prepared by:
Public Utility District No. 1 of Douglas County
1151 Valley Mall Parkway
East Wenatchee, WA 98802
www.douglaspud.org/relicensing

December 2006