

THE 2007 RECREATION ACTION PLAN WAS FILED WITH THE  
FEDERAL ENERGY REGULATION COMMISSION (FERC) ON  
DECEMBER 26, 2007 AND IS AWAITING APPROVAL.

UPON APPROVAL, PUBLIC UTILITY DISTRICT NO. 1 OF  
DOUGLAS COUNTY WILL IMPLEMENT THE MEASURES  
APPROVED BY FERC.

Wells Dam Vista Overlook, cont.



**Figure 4.2-3. Wells Dam Vista Overlook and original turbine runner**

### Wells Dam Visitor Center

The Wells Dam Visitor Center is located inside Wells Dam and includes exhibits on the lifecycle of salmon and the Wells Project power generation facilities. It also includes a variety of exhibits depicting historical, geographic and scientific facts of the area. A window in the Visitor Center provides for close viewing of migrating salmon through the fish ladders. The Visitor Center is open to the public through prearranged tours (Figure 4.2-4). All facilities at the Wells Dam Visitor Center are within the FERC Project boundary. The District is currently discussing future options for the Visitor Center during relicensing consultation.



**Figure 4.2-4. View from inside the Wells Dam Visitor Center**

### *Pateros, WA*

The District has helped develop and fund the existing parks and recreation facilities on lands and waters within the city of Pateros on both City and District property. These facilities include Peninsula Park, Memorial Park, two concrete boat launches (Methow and Winter Launch), parking, and restrooms. A privately-owned 8-site RV park is located adjacent to Memorial Park.

### Peninsula Park

Peninsula Park is located near the confluence of the Methow and Columbia rivers. It includes a gazebo, paved walking path, covered picnic shelter, swimming beach, restroom facilities, playground equipment, parking, lagoon, and lawn area (Figure 4.2-5). The City of Pateros is responsible for maintaining Peninsula Park, and the District assists with major repairs and improvements. All facilities at Peninsula Park are outside of the FERC Project boundary, with the exception of the swim area that is within the boundary.



**Figure 4.2-5. View of Peninsula Park**



## Memorial Park

Memorial Park is located in Pateros along the Columbia River. It includes three covered picnic shelters, fishing and ski docks, mini-hydro launch, vehicle parking, interpretive displays, restroom facilities, and a developed waterfront trail (Figure 4.2-6). The waterfront trail begins at the east end of Memorial Park near City Hall and meanders through the park, under the US 97 bridge and terminates at the Methow Boat Launch. The Winter Boat Launch is located just upstream of Memorial Park. The City of Pateros is responsible for maintaining Memorial Park, and the District assists with major repairs and improvements. The facilities at Memorial Park are outside of the FERC Project boundary with the exception of the immediate shoreline. Facilities within the boundary are the winter launch, ski docks, fishing docks, mini-hydro launch, and part of the asphalt path/trail.



**Figure 4.2-6. View of Memorial Park and Waterfront Trail**

## Methow Boat Launch

The Methow Boat Launch is located in Pateros between Peninsula Park and Memorial Park at the confluence of the Columbia and Methow rivers. The site includes a concrete boat launch and dock, parking, basketball hoops, and restrooms. The boat launch area is connected to Memorial Park via an accessible walkway underneath US 97 and the railroad bridge. The City of Pateros is responsible for maintaining the Methow Boat Launch, and the

**2007 Recreation Action Plan Update**

---

District assists with major repairs and improvements. All facilities at the Methow Boat Launch are outside of the FERC Project boundary with the exception of the boat launch and handling float which are within the boundary.

**Riverside Drive Recreation Access**

This site is located in Pateros along the left bank adjacent to the site of the Methow River approximately 0.25 mile upstream from Peninsula Park. The site provides day use access to the Methow River for fishing and canoeing/kayaking. The tennis courts were funded through a community effort on property provided by Pateros. The City of Pateros is responsible for maintaining the tennis courts. The site also includes a restroom and the shoreline adjacent to the river has recently been landscaped and is used for day use activities. The District has, in the past, assisted with some repairs and improvements at this site including major maintenance of the tennis courts. All facilities at the Riverside Drive Recreation Access are outside of the FERC Project boundary with the exception of the shoreline landscape which is within the boundary.

*Brewster, WA*

The District has helped develop and fund the existing park and recreation facilities on lands and waters within the city of Brewster. These facilities primarily include Columbia Cove Park and boat launch, and a developed waterfront trail along the shoreline.

Columbia Cove Park

Columbia Cove Park includes a boat launch, boat docks, three covered picnic shelters, swimming beach, restroom facilities, playground equipment, lawn area, vehicle parking, and a basketball court (Figures 4.2-7 and 4.2-8). The park is located adjacent to a City-operated pool and RV campground. The City's RV campground includes approximately 23 full hookups. The city of Brewster is responsible for maintaining Columbia Cove Park and the District assists with major repairs and improvements. The City of Brewster maintains and manages its pool and RV campground. All facilities at Columbia Cove Park are outside of the FERC Project boundary with the exception of the swim area, boat launch, and handing floats which are within the boundary.



**Figure 4.2-7. Columbia Cove Park (picnic shelter and play equipment)**



Columbia Cove Park, cont.



**Figure 4.2-8. Columbia Cove Park (swimming area)**

Brewster Waterfront Trail

The compacted crushed gravel waterfront trail in Brewster is located north of Columbia Cove Park and extends approximately 0.5 mile along the shoreline. The City of Brewster developed the trail with the assistance of the District and WDNR. The trail is generally 6 to 8 feet above the water level and 20 feet or more below adjacent streets and residential areas. It is connected to city streets at either end by ramps and at three intermediate locations by stairs. The City of Brewster is responsible for maintaining the waterfront trail, and the District assists with major repairs and improvements. All facilities at the Brewster Waterfront Trail are inside of the FERC Project boundary with the exception of the approach to the trail which is outside the boundary.

*Park Island*

Park Island, formerly proposed to be Chief Joseph State Park, consists of approximately 300 acres of land on Bridgeport Bar in Douglas County. This area was identified in the 1967 Wells Recreation Plan for future development and transferred in fee title to WSPRC by the District in 1967. An Interlocal Agreement pertaining to Chief Joseph State Park between the



District and WSPRC was signed in 1983 as mitigation for the Lake Pateros (Wells Reservoir) elevation increase. Under the terms of the agreement, the District agreed to pay WSPRC a lump sum of \$125,000 and then \$25,000 annually through 2012 to assist in the future development of the park. The site, however, was later determined to be unsuitable as a high-density recreation facility. This determination was made in conjunction with WSPRC based on an analysis funded by the 1997 RAP Update. A memorandum of understanding (MOU) with WSPRC regarding the proposed Chief Joseph State Park was later adopted in 2003. This MOU acknowledged the District's 1997 RAP Update that identified the need for protection of natural areas and wildlife habitat and also raised concerns regarding the incompatibility of intense recreation development of the proposed Chief Joseph State Park site adjacent to highly valued wildlife habitat at Bridgeport Bar. The MOU provided for the sale of the land back to the District, identified unspent funds from the 1983 Interlocal Agreement, required payment of the District's future obligation under the 1983 Interlocal Agreement, and allowed that these monies be used to secure a substitute property. The proceeds from the property sale would be used to acquire other property to substitute for the proposed Chief Joseph State Park, and the proceeds from the lump sum payment would be used for the development of an existing park within the Wells Project market area or be used to purchase substitute property. WSPRC used the proceeds to further develop Pearrygin Lake State Park in the Methow Valley. The District no longer holds title to Park Island.

### *Bridgeport, WA*

The District has helped develop and fund Marina Park, which is located on lands and waters within the City of Bridgeport.

#### Marina Park

Marina Park includes covered picnic shelters, gazebo, playground equipment, swimming beach and lagoon, lawn area, restrooms, parking, asphalt pathway, two boat launches (one boat launch is owned by the USACOE), two boat docks, and an RV campground (Figures 4.2-9 and 4.2-10). The RV campground includes approximately 18 full hookups and 4 tent sites. The City of Bridgeport is responsible for maintaining Marina Park and the District assists with major repairs and improvements. All facilities at Marina Park are outside of the FERC Project boundary with the exception of the USACOE boat launch, the current boat launch, lagoon swim area, eight RV sites and two tent sites, boat launch parking, and a portion of the day use area which are within the boundary.



**Figure 4.2-9. Marina Park (swimming area and boat docks)**

Marina Park, cont.



**Figure 4.2-10. Marina Park (play equipment)**

#### **4.2.2 Additional Sites and Use Areas**

##### *Carpenter Island Boat Launch*

The current Carpenter Island Boat Launch is a concrete plank boat launch located on the right bank of the Wells Project tailrace immediately downstream of Wells Dam and Fish Hatchery near RM 515.5. This boat launch is located within the Wells Project boundary on land owned by the District and is used primarily for boat fishing access. It includes a single launch lane and portable toilets. Access to this launch is provided via Azwell Road. The District is responsible for the maintenance of the Carpenter Island Boat Launch. All facilities at the Carpenter Island Boat Launch are inside of the FERC Project boundary with the exception of the existing (and proposed) access road to the boat launch that is outside the boundary.



**2007 Recreation Action Plan Update**

---

*Starr Boat Launch*

The Starr Boat Launch is located on 2.1 acres of land on the right bank of the Lake Pateros (Wells Reservoir) near RM 518. It is accessible via US 97. This site includes a gravel parking area, concrete boat launch and vault toilet. Recreation users access the Lake Pateros (Wells Reservoir) via the Starr Boat Launch for boating, skiing and waterfowl hunting. A turn lane for accessing the Starr Boat Launch off US Highway 97 was funded by the District and completed in 2006. The District is responsible for the maintenance of the Starr Boat Launch. All facilities at the Starr Boat Launch are inside of the FERC Project boundary.

*Methow Fishing Access – Site 1*

The first Methow River fishing access site is owned by the District and is located along the right bank of the river. This fishing access is 2.4 acres located off of State Route 153 approximately 0.5 mile from US 97 at the confluence of the Columbia and Methow rivers. This site includes a gravel car-top boat launch, gravel parking and 2 vault toilets. The District is responsible for the maintenance of this site. All facilities at the Methow Fishing Access Site 1 are inside of the FERC Project boundary.

*Methow Fishing Access Sites – Sites 2-6*

Additional fishing and boating access sites are located along the Methow River shoreline between Pateros and Carlton. WDFW holds fee title and easements for 20,000 feet of shoreline along the Methow River which includes these access and boat launch sites. The District purchased and deeded these lands and easements to WDFW as part of the mitigation for the impacts of the Wells Project. WDFW maintains these sites; however, the District has provided major repairs and improvements to these sites through past RAP's. All facilities at the Methow Fishing Access Sites 2 thru 6 are outside of the FERC Project boundary.

*Informal Boat Launch 1*

An informal, undeveloped boat launch is located on the District land on the left bank of the Lake Pateros (Wells Reservoir) across from Pateros at RM 524.3. Boats are launched over the bank to access the Lake Pateros (Wells Reservoir) for fishing, boating and waterfowl hunting. The District does not maintain this site. All facilities at the Informal Boat Launch 1 are inside of the FERC Project boundary.

*Informal Boat Launch 2*

An informal, paved boat launch is located on the left bank of the Lake Pateros (Wells Reservoir) at RM 533. Boats are launched from this area (formerly a paved street) to access the Lake Pateros (Wells Reservoir) for fishing, boating and waterfowl hunting. The District does not maintain this site. All facilities at the Informal Boat Launch 2 are inside of the FERC Project boundary.

### *Chicken Creek Boat Launch*

The Chicken Creek Boat Launch is located near RM 537 at Washburn Island where Chicken Creek flows into the Washburn Island Slough. The facilities at the site are owned by the District and include a concrete plank boat launch, gravel parking lot and vault toilet. The boat launch provides access to the Washburn Island Slough but not the Lake Pateros (Wells Reservoir). The District is responsible for the maintenance of this site. All facilities at the Chicken Creek Boat Launch are inside of the FERC Project boundary.

### *Monse Bridge Boat Launch*

The Monse Bridge Boat Launch was developed by the District and is located on the right bank of the Okanogan River at RM 4.7. Facilities at the boat launch include a concrete plank launching ramp, gravel parking and a vault toilet. The District is responsible for the maintenance of this site. All facilities at the Monse Bridge Boat Launch are inside of the FERC Project boundary.

### *Cassimer Bar Fishing Access*

The Cassimer Bar Fishing Access was developed by the District and is located on the left bank of the Okanogan River near RM 1. The site is in close proximity to the US 97 bridge near the mouth of the Okanogan and Columbia rivers. This site includes shoreline access, gravel parking and a vault toilet. The District maintains this site. All facilities at the Cassimer Bar Fishing Access are inside of the FERC Project boundary.

### *Okanogan River Informal Boat Launch and Fishing Site 1*

The Okanogan River Informal Boat Launch is located on the right bank of the Okanogan River at RM 2.5. Public access to the site is available via Monse River Road off of US 97. This undeveloped area serves as boat launch for waterfowl hunters and as a shoreline fishing location. The District does not maintain this site. All facilities at the Okanogan River Informal Boat Launch and Fishing Site 1 are inside of the FERC Project boundary.

### *Okanogan River Informal Boat Launch and Fishing Site 2*

The Okanogan River Informal Boat Launch is located on the right bank of the Okanogan River at RM 6.7. Public access to the site is available via Monse River Road. This undeveloped area serves as boat launch for waterfowl hunters and as a shoreline fishing location. The District does not maintain this site. All facilities at the Okanogan River Informal Boat Launch and Fishing Site 2 are inside of the FERC Project boundary.

### *Wildlife Areas*

A variety of wildlife areas are located along the Lake Pateros (Wells Reservoir) and in upland areas in the vicinity of the Project. These wildlife areas provide habitat for and offer wildlife related recreation opportunities, such as hunting and bird watching. The District has

***2007 Recreation Action Plan Update***

---

consistently provided significant annual funding for the operation and maintenance of the Wells Wildlife Area (WWA).

The WWA consists of over 5,758 acres of land within six different units throughout Douglas and Okanogan counties. This land was funded by the District and developed by WDFW for wildlife mitigation purposes. Additional wildlife sites also exist within the Wells Project area. Areas within the WWA are both inside and outside of the FERC Project boundary.





## **5.0 Recreation Trends**

The Project area provides numerous outdoor recreation opportunities, particularly water-based activities. To help place the Project area in its proper regional context in terms of outdoor recreation opportunities, this section describes statewide, mid-Columbia region, and Project area outdoor activity participation and trend estimates. In addition to existing estimates, outdoor activity participation trends are also discussed. This section is meant to provide a snapshot in time of existing use and anticipated trends that may influence recreation needs during the next 5-year period (2007 – 2012).

### **5.1 Statewide and Regional Recreation Activity Participation Estimates**

In Washington, one of the best sources of information regarding recreation activity participation is the Interagency Committee for Outdoor Recreation (IAC). (Note: the IAC's name has been changed to the Recreation and Conservation Office (RCO) in July 2007. RCO provides planning services for the Recreation and Conservation Funding Board and other State agency organizations.) The IAC (or RCO) develops a Washington Statewide Comprehensive Outdoor Recreation Plan (SCORP) approximately every 5 years. SCORP planning documents provide baseline recreation-related data, as well as recommendations and guidance to all recreation providers in the State. The latest SCORP document, titled *An Assessment of Outdoor Recreation in Washington State*, was completed in 2002 (a new version of the SCORP is currently being developed by RCO and will likely be available in late 2007/early 2008). Unfortunately, the 2002 SCORP document does not provide city, county, or region specific activity participation rates. However, it does provide statewide information that is helpful for planning purposes (IAC 2002).

At the state level, approximately 53 percent of state residents participate in some form of outdoor recreation activity. In terms of outdoor activity participation, the most popular activities for residents of Washington State include walking/hiking, outdoor team and individual sports, nature-oriented activities, sightseeing, bicycle riding, picnicking, water-based activities, snow/ice activities, fishing, and camping, among others. Table 5.1-1 displays the estimated number of participants for activities that are available in the Project area.

**Table 5.1-1. Estimated number of participants in select outdoor activities in Washington State (2002).**

<b>Recreation Activity</b>	<b>Estimated Number of Statewide Participants<sup>1</sup></b>
<u>Water Activities</u>	
Swimming/wading	196,000
Motor boating	153,000
Hand powered boating	57,000
Water skiing	50,000
Personal watercraft use	40,000
Sail boating	9,000
<u>Picnicking</u>	
At undesignated sites	525,000
At designated picnic sites	460,000
At group facilities	157,000
<u>Sightseeing</u>	
Scenic areas	587,000
Cultural/historical	434,000
<u>Nature Activities</u>	
Observing/photographing nature	939,000
Visiting nature/interpretive centers	217,000
<u>Hiking</u>	
On mountain/forest trails	279,000
No established trails	90,000
On rural trails	74,000
<u>Walking</u>	
In a park/trail setting	449,000
With a pet (on leash) in a park/trail	322,000
<u>Bicycling</u>	
On mountain/forest trails	93,000
On rural trail systems	88,000
No established trails	32,000

<sup>1</sup> Estimated number of participants rounded to nearest 1,000.

Source: IAC 2002.

In 2007, RCO is in the process of developing a new version of the WA SCORP. Preliminary data is presented in Table 5.1-2 for the Columbia River Plateau Region, as well as the State. The Columbia River Plateau Region includes Douglas, Adams, Grant, and Lincoln counties. Note: direct comparisons with previous SCORP data are not possible at this time due to the



**2007 Recreation Action Plan Update**

preliminary nature of the 2007 data. However, the 2007 data are helpful in drawing conclusions that are more region-specific, compared to 2002 data.

**Table 5.1-2. Preliminary estimates of participants in recreation activities in the Columbia River Plateau region and in Washington State (2007).<sup>1</sup>**

Recreation Activity	Columbia River Plateau Region		Statewide	
	Number	Percentage (%)	Number	Percentage (%)
<u>Water-based Activities</u>				
Swimming/wading	15,523	10.8	1,215,962	19.3
Motor boating	17,274	12.0	712,694	11.3
Hand powered boating	6,712	4.7	441,482	7.0
Personal watercraft use	1,466	1.0	171,710	2.7
Water skiing	2,433	1.7	133,189	2.1
Sail boating	371	0.3	96,833	1.5
<u>Fishing</u>				
From a bank, dock, or jetty	18,200	12.7	539,100	8.6
From a private boat	17,162	12.0	464,401	7.4
<u>Nature Activities</u>				
Observing/photographing nature	38,987	27.2	1,979,455	31.5
Visiting a nature/interpretive center	5,250	3.7	663,220	10.5
<u>Picnicking</u>	602,904	54.9	3,004,436	47.8
<u>Sightseeing</u>	55,829	38.9	2,677,410	42.6
<u>Camping</u>				
With a car	11,276	7.9	551,439	8.8
With a recreational vehicle	8,171	5.7	461,068	7.3
With a motor boat	1,960	1.4	104,440	1.7
With a canoe/kayak	634	0.4	89,016	1.4
<u>Walking and Hiking</u>				
Walking with a pet	411,322	37.4	2,331,044	37.1
Walking without a pet	576,742	52.5	3,484,390	55.4
Hiking	244,268	22.2	1,296,780	20.6
<u>Bicycle Riding</u>				
Bicycle riding	340,745	31.0	2,045,794	32.5
Bicycle touring	20,083	1.8	47,577	0.8

<sup>1</sup> All data presented in Table 5.1-2 is preliminary and is subject to change based on further analysis by the RCO.  
Source: RCO 2007 (unpublished preliminary 2007 SCORP data).

In addition to RCO's SCORP estimates of statewide outdoor recreation participation, two other recent studies (Outdoor Recreation for 21<sup>st</sup> Century America [Cordell 2004] and State-Level Economic Contributions of Active Outdoor Recreation [Outdoor Industry Foundation 2007]), also provide statewide estimates. Outdoor Recreation for 21<sup>st</sup> Century America provides current participation, trends, and future supply and demand for recreation activities and facilities in the United States and is commonly used in recreation research. Activity participation rates and projections presented in this document are based on results from the 1999–2001 National Survey on Recreation and the Environment. Table 5.1-3 displays statewide participation estimates based on data provided in Outdoor Recreation for 21<sup>st</sup> Century America.

**Table 5.1-3. Estimates of participants in recreation activities in Washington State.**

Recreation Activity	Outdoor Recreation for 21 <sup>st</sup> Century America (Cordell 2004) Estimates of Recreation Participation in Washington State	
	Number <sup>1</sup>	Percentage (%)
Family Gathering	4,694,516	73.4
Picnicking	4,099,707	64.1
Sightseeing	3,658,396	57.2
Driving for Pleasure	3,568,855	55.8
Visiting a Beach	3,485,710	54.5
Fishing <sup>2</sup>	3,089,170	48.3
Day Hiking	3,006,025	47.0
Swimming	2,935,671	45.9
Visiting a Wilderness/Primitive Area	2,897,296	45.3
Developed Camping	2,622,277	41.0
Motor boating	1,880,365	29.4
Primitive Camping	1,714,074	26.8
Backpacking	1,413,471	22.1
Hunting <sup>3</sup>	1,311,139	20.5
Waterskiing	671,559	10.5
Jet Skiing	620,392	9.7
Canoeing	601,205	9.4
Kayaking	326,186	5.1

<sup>1</sup> State-specific estimates of recreation use are reported in percent of population (based on 2000 US Census data) participating in each activity.

<sup>2</sup> Fishing percent participation includes (sums) cold water fishing (22.4%), warm water fishing (12.8%), and anadromous fishing (13.1%).

<sup>3</sup> Hunting percent participation includes (sums) big game (9.5%), small game (7.6%), and migratory bird hunting (3.4%).

Source: Cordell et al. 2004

State-Level Economic Contributions of Active Outdoor Recreation assesses the economic contributions of several active outdoor recreation activities in 21 states including Washington (Outdoor Industry Foundation 2007). Broad estimates of statewide activity participation levels are provided in this report. Results for Washington State for the seven activity categories tracked in this study include the following number and percent of statewide participants:

**Table 5.1-4. Washington State participation rates in outdoor recreation activities.**

Recreation Activity	No. of Participants	Percentage
Wildlife Viewing	1,837,100	39%
Camping	1,685,523	36%
Bicycling	1,522,469	32%
Fishing	781,336	16%
Paddling	555,625	12%
Trail Activities	543,671	12%
Hunting	206,430	4%

Source: Outdoor Industry Foundation, 2007

While there may be slight differences in the various estimates of outdoor recreation participation, they place overall activity participation in the appropriate context for purposes of this assessment.

## 5.2 Mid-Columbia River Recreation Activity Participation Estimates

To help place Project area recreation use levels in the proper context, use estimates from other Mid-Columbia River recreation facilities, sites, and use areas are provided below. These resources are provided by the PUDs, USACOE, BOR and WSPRC.

### 5.2.1 Chelan County PUD

Chelan County PUD tracks visitor use at their three hydroelectric projects (Rocky Reach, Rock Island, and Lake Chelan) on an annual basis. The Rocky Reach Project begins below Wells Dam along the Columbia River. Visitor use counts from the past 5 years are provided in Table 5.2-1.

**Table 5.2-1. Estimated annual recreational use at Chelan County PUD projects.**

Project <sup>1</sup>	2002	2003	2004	2005	2006
Rocky Reach	781,832	584,271	546,139	594,771	566,684
Rock Island	2,213,560	2,097,612	2,242,794	2,405,698	3,747,728
Lake Chelan	390,588	351,106	244,707	330,034	373,818
<b>Total</b>	<b>3,385,980</b>	<b>3,032,989</b>	<b>3,033,640</b>	<b>3,330,503</b>	<b>4,688,230</b>

<sup>1</sup> All recreation facilities, sites, and use areas are included in the use estimates for each project.

Source: Chelan County PUD 2007 (unpublished annual use estimates provided by Chelan County PUD)

As seen in Table 5.2-1, visitor use levels have fluctuated during the 2002 – 2006 timeframe. There are likely several reasons for this fluctuation; however, in general, while use levels may vary on an annual basis, they are increasing over the long-term.

### **5.2.2 Grant County PUD**

Grant County PUD submitted a final license application (FLA) to FERC for its Priest Rapids Hydroelectric Project in 2003 (Grant County PUD 2003). The FLA, as well as the subsequent FERC Final Environmental Impact Statement (FEIS) (FERC 2006), summarized existing recreation use in the Priest Rapids project area. Key findings of the recreation-related studies included:

- Use at the Priest Rapids Project is influenced by The Gorge Amphitheater located nearby;
- It is estimated that there were approximately 295,000 recreation visitor days in the Priest Rapids Project area in 1999;
- Wanapum Reservoir is both the larger and more heavily used of the two Project reservoirs (Wanapum and Priest Rapids reservoirs);
- The most common activities in the Project area included swimming (82 percent) followed by resting/relaxing (70.4 percent), camping (61.7 percent), power-boating (54.0 percent), picnicking (51.8 percent), and water-skiing (46.7 percent);
- Hunting and fishing are also popular recreation activities, particularly during the fall season; and
- The majority of visitors surveyed live in the Central Puget Sound area (King, Kitsap, Pierce, and Snohomish Counties), with King County residents leading in visitation at 42 percent. Sixteen percent of the visitors surveyed came from the counties within and bordering this Project area.

Both the FLA and FEIS also included a comparison of Project area recreation use information that was collected in 1996 and then again in 1999 (Grant Co. PUD 2003; FERC 2006). Key findings from this comparison included:

- The percentage of visitors from the Central Puget Sound area increased from 51 percent to 73 percent;
- Overall recreational use has increased – for example, the following facilities experienced increases in use: campgrounds (32 percent), car accessible day use sites (13 percent), boat accessible day use sites (105 percent), and boat use on Wanapum Reservoir (111 percent); and
- There were an estimated 295,000 recreation visitor days in 1999 (a 24 percent increase in recreation visitor days from 1996).

**2007 Recreation Action Plan Update**

Additionally, the FEIS provided a brief summary of the FERC Form 80 – Recreation Report that Grant County PUD filed with FERC in 2002 (FERC 2006). Use estimates from the 2002 FERC Form 80 included:

- Wanapum Development: 353,843 recreation visitor days (241,563 day visits and 112,280 night visits); and
- Priest Rapids Development: 67,930 recreation visitor days (43,925 day visits and 24,005 night visits).

Based on a comparison with a 1999 relicensing existing use study, the FERC Form 80 use estimates seem to indicate that use levels have increased at both the Wanapum and Priest Rapids developments.

### **5.2.3 Existing Recreation Use at Other Regional Recreation Areas**

In addition to the hydroelectric projects immediately downstream of the Project, there are also federal hydroelectric projects upstream, as well as several State Parks in the vicinity of the Project. This section describes existing recreation use at the Chief Joseph and Grand Coulee hydroelectric projects, as well as Alta Lake and Bridgeport State Parks.

#### *Chief Joseph Hydroelectric Project*

Several calls have been made to the USACOE to gather existing use information and trends for this project. No data were provided by the USACOE.

#### *Grand Coulee Hydroelectric Project*

The Grand Coulee Hydroelectric Project is owned and operated by the BOR; however, recreational opportunities on Lake Roosevelt (the reservoir formed by the Grand Coulee Dam) are managed by the NPS. Visitor use statistics for the Lake Roosevelt National Recreation Area are provided in Table 5.2-2 for years 2000 through 2004 (the most current years for which data is available). Use levels over this period of time have varied, but are generally in the 1.2 to 1.4 million per year range.

**Table 5.2-2. Existing annual recreation use estimates at the Lake Roosevelt National Recreation Area.**

<b>Year</b>	<b>Total Recreation Visits Per Year</b>
2000	1,407,448
2001	1,277,183
2002	1,436,209
2003	1,363,483
2004	1,264,923

*Source: NPS 2007*



Washington State Parks and Recreation Commission

WSPRC owns and operates two State Parks proximal to the Project. Alta Lake State Park is a 181-acre camping area that offers good trout fishing during summer months and is 4 miles from Pateros. Bridgeport State Park is a 748-acre camping area along shoreline of the Rufus Woods Lake, a reach of the Columbia River behind Chief Joseph Dam. Visitor use statistics for Alta Lake State Park and Bridgeport State Park are provided in Table 5.2-3 and Table 5.2-4 for the years 1997 through 2006 (data are missing for 1999). Use levels over this period of time have varied for both parks, though visitor use ranges between approximately 100,000 to 200,000 visitors per year for Alta Lake State Park and between approximately 60,000 to 80,000 visitors per year for Bridgeport State Park.

**Table 5.2-3. Existing annual recreation use estimates at Alta Lake State Park.**

Year	Camping	Day Use	Total
1997	31,770	191,498	223,268
1998	31,695	148,163	179,858
1999	0	0	0
2000	40,478	129,400	169,878
2001	27,653	121,600	149,253
2002	29,297	92,727	122,024
2003	28,364	41,550	69,914
2004	22,191	106,246	128,437
2005	22,235	100,281	122,516
2006	22,094	129,375	151,469

Source: Washington State Parks and Recreation Commission, Eastern Region

**Table 5.2-4. Existing annual recreation use estimates at Bridgeport State Park.**

Year	Camping	Day Use	Total
1997	13,912	55,396	69,308
1998	15,468	58,663	74,131
1999	0	0	0
2000	17,571	65,026	82,597
2001	13,378	56,942	70,320
2002	13,127	59,284	72,411
2003	14,793	50,169	64,962
2004	12,494	60,812	73,306
2005	12,936	54,338	67,274
2006	13,392	52,918	66,310

Source: Washington State Parks and Recreation Commission, Eastern Region

### 5.3 Existing Project Area Recreation Use

The District recently completed a Recreation Visitor Use Assessment (DTA 2006) to collect recreation-related information for use in the PAD for the Wells Project licensing effort. This is the most current estimate of existing use in the Project area. The primary goals of this study were to assist not only in the preparation of the PAD, but also to describe use levels, preferences, attitudes, and characteristics of the primary recreation user groups in the Project area. For purposes of this Plan, applicable results from the Recreation Visitor Use Assessment are summarized below.

As is typical in outdoor recreation use settings, the greatest Project area use occurred during the peak season (May through September). Annually, the Project area sees recreation users numbering between 19,258 and 44,929. The most popular activities in the Project area include relaxing/camping, fishing from a boat, speed/sport boating, fishing from shore, and swimming. Overall, the Recreation Visitor Use Assessment determined that the existing Project area recreation facilities and use areas are commensurate to the current level of visitor use. Tables 5.3-1 to 5.3-3 provide summarized findings from the Recreation Visitor Use Assessment (DTA 2006) related to existing visitor activity participation. More detailed information regarding existing recreational use in the Project area can be found in the Recreation Visitor Use Assessment and/or the PAD.

**Table 5.3-1. Existing recreation use by Wells Project visitors by area and type of day.**

Activity	Pateros / Wells			Brewster			Okanogan / Bridgeport		
	Weekday	Weekend	Holiday	Weekday	Weekend	Holiday	Weekday	Weekend	Holiday
<b>Lake Pateros (Wells Reservoir) Surface Area Recreation Use (2006)</b>									
<u>Fishing/Ski Boats</u>	1.1	4.5	8.7	2.5	7.7	4.7	3.5	30.6	7.7
<i>Fishing Boat</i>									
Boats	0.3	1.8	1.7	2.2	6.7	2.3	3.0	29.6	4.0
People	0.4	3.6	3.0	4.2	18.2	3.0	5.4	89.6	6.7
<i>Skiing</i>									
Boats	0.9	2.6	7.0	0.3	1.0	2.3	0.5	1.0	3.7
People	1.3	8.6	3.7	0.3	3.4	4.3	0.5	2.2	6.0
<i>Jet Skiing</i>									
Jet skis	0.2	1.0	5.7	0.9	1.5	1.7	0	0.1	0
People	0.1	1.5	2.0	0.5	1.2	0.7	0	0.2	0
<u>Non-Motorized Boats</u>	0.1	0	0	0.6	0.5	0.3	0	0.4	1.3
Sea Kayaks	0	0	0	0	0.1	0	0	0.2	1.3

**Table 5.3-1. Existing recreation use by Wells Project visitors by area and type of day.**

Activity	Pateros / Wells			Brewster			Okanogan / Bridgeport		
	Weekday	Weekend	Holiday	Weekday	Weekend	Holiday	Weekday	Weekend	Holiday
<b>Lake Pateros (Wells Reservoir) Surface Area Recreation Use (2006)</b>									
Sailboats	0	0	0	0.6	0.4	0.3	0	0	0
River Kayaks	0.1	0	0	0	0	0	0	0.2	0
Canoes	0	0	0	0	0	0	0	0	0
<b>Lake Pateros (Wells Reservoir) Shoreline Recreation Use</b>									
<u>Anglers</u>	0.3	2.2	1.7	0.1	0	0	1.6	3.5	0.3
<u>Picnickers</u>	0.1	1.6	2.3	0.7	1.1	0.5	0	1.4	5.3
<u>Campers</u>	0	0.1	0.3	0.6	1.2	1.5	0.5	0	0.3

Source: DTA 2006

**Table 5.3-2. Existing recreation use by Wells Project by visitors by area and season.**

Activity	Pateros / Wells		Brewster		Okanogan / Bridgeport	
	Peak Season	Non-Peak Season	Peak Season	Non-Peak Season	Peak Season	Non-Peak Season
<b>Lake Pateros (Wells Reservoir) Surface Area Recreation Use (2006)</b>						
<u>Fishing/ski Boats</u>	3.5	2.3	6.0	0.7	18.2	1.9
<i>Fishing Boat</i>						
Boats	0.6	2.3	5.0	0.7	16.8	1.9
People	1.0	4.7	12.1	1.1	43.7	17.7
<i>Skiing</i>						
Boats	2.9	0	1.0	0	1.3	0
People	5.7	0	2.5	0	2.2	0
<i>Jet Skiing</i>						
Jet skis	1.4	0	1.6	0	0.1	0
People	1.1	0	1.0	0	0.1	0
<u>Non-Motorized Boats</u>	0.1	0	0.7	0	0.4	0
Sea Kayaks	0	0	0.1	0	0.3	0
Sailboats	0	0	0.6	0	0	0
River Kayaks	0.1	0	0	0	0.1	0
Canoes	0	0	0	0	0	0

**2007 Recreation Action Plan Update**

**Table 5.3-2. Existing recreation use by Wells Project by visitors by area and season.**

Activity	Pateros / Wells		Brewster		Okanogan / Bridgeport	
	Peak Season	Non-Peak Season	Peak Season	Non-Peak Season	Peak Season	Non-Peak Season
<b>Lake Pateros (Wells Reservoir) Shoreline Recreation Use (2006)</b>						
<u>Anglers</u>	0.2	4.1	0.1	0	2.3	1.7
<u>Picnickers</u>	1.2	0	1.0	0	1.4	0
<u>Campers</u>	0.1	0	0.6	0	0.4	0

Source: DTA 2006

**Table 5.3-3. Annual use estimate summary (Wells Hydroelectric Project), 2005.**

Location	Annual Estimate		Peak Season Est.		Shoulder Seasons Est.	
	Low	High	Low	High	Low	High
Carpenter Island Boat Launch	577.5	3,129.1	577.5	2,383.9	0.0	745.2
Wells Overlook	393.5	1,787.2	393.5	967.6	0.0	819.6
Starr Boat Launch	368.2	1,088.0	87.7	419.0	280.5	669.0
Pateros RV Park	1,702.0	5,791.8	1,564.0	2,663.1	138.0	3,128.7
Pateros Memorial Park	2,746.0	6,774.8	1,373.2	3,431.6	1,372.8	3,343.2
Methow Fishing Access Lower	636.0	288.7	0.0	288.7	636.0	0.0
Methow Fishing Access Parking/Toilet	0.0	513.5	0.0	237.5	0.0	276.0
Methow Fishing Access Two Parking Areas	630.0	675.6	630.0	288.0	0.0	387.6
Methow Fishing Access Parking/Toilet South Side	160.0	1,675.0	160.0	640.0	0.0	1,035.0
Methow Fishing Access Rafting Take-out	927.0	828.3	927.0	828.3	0.0	0.0
City of Brewster, Columbia Cove Park	3,930.0	7,294.2	3,518.4	6,462.6	411.6	831.6
City of Brewster, Public RV Park	1,774.5	3,939.0	1,774.5	3,322.8	0.0	616.2
Informal Boat Launch	0.0	0.0	0.0	0.0	0.0	0.0
Waterfront Trail	264.6	2,382.5	0.0	371.0	0.0	0.0
Bridgeport Marina Park	4,594.5	5,864.0	4,324.5	5,750.0	264.6	2,011.5

**Table 5.3-3. Annual use estimate summary (Wells Hydroelectric Project), 2005.**

Location	Annual Estimate		Peak Season Est.		Shoulder Seasons Est.	
	Low	High	Low	High	Low	High
Bridgeport Bar Wildlife Unit	0.0	198.0	0.0	0.0	270.0	114.0
Washburn Boat Launch	96.8	854.8	96.8	692.8	0.0	0.0
Washburn Island Wildlife Unit	0.0	0.0	216.0	0.0	0.0	198.0
Fishing Access	147.0	765.0	147.0	661.5	0.0	162.0
Monse Boat Launch	3,468.0	15,087.1	94.5	513.7	0.0	132.3
Okanogan Dirt Boat Launch	0.0	40.0	0.0	12.0	0.0	103.5
Gravel Boat Launch	0.0	835.2	0.0	421.2	0.0	0.0
<b>Total (All Sites)</b>	<b>22,415.6</b>	<b>59,811.8</b>	<b>15,884.6</b>	<b>30,355.3</b>	<b>3,373.5</b>	<b>14,573.4</b>

Source: DTA 2006

**Table 5.3-4. Existing annual watercraft use estimates for the Wells Project by area and season.**

Area	Peak Season	Shoulder Seasons	Annual (2006)
Pateros/Wells	557.9	371.1	929.0
Brewster	1,051.3	78.0	1,129.3
Okanogan/Bridgeport	2,010.1	297.0	2,307.1
<b>Total</b>	<b>3,619.3</b>	<b>746.1</b>	<b>4,365.4</b>

Source: DTA 2006

## 5.4 Project Area Recreation Use Trends

Given the short timeframe of this Plan, changes in recreation participation are unlikely to significantly affect the need for new and/or enhanced facilities and use areas over the next five years. Nonetheless, it is helpful to briefly assess potential outdoor recreation participation trends that may impact management-decisions (including the need for new and/or enhanced facilities and use areas) in the short-term to help evaluate potential needs that have been identified during the development of this Plan.

### 5.4.1 Estimates of Future Participation in Outdoor Recreation in Washington State

A follow-up to the 2003 Washington SCORP document - Estimates of Future Participation in Outdoor Recreation in Washington State - estimated future participation rates for popular outdoor recreation activities in the state, including some that are known to occur in the Project vicinity and region (IAC 2003). Ten- and 20-year estimates, as a percent change in the number of people participating in each activity, are provided in Table 5.4-1 for select



**2007 Recreation Action Plan Update**

activities. In general, future participation rates in most outdoor recreation activities are anticipated to increase; however, both fishing and hunting, activities occurring in the Project vicinity, are expected to decline over the next 20 years.

**Table 5.4-1. Anticipated percentage change in outdoor recreation activity participation in Washington State over a 10- to 20- year period.**

<b>Recreation Activity</b>	<b>Estimated 10 year Percent (%) Change</b>	<b>Estimated 20 year Percent (%) Change</b>
Walking	+23	+34
Hiking	+10	+20
Nature activities	+23	+37
Sightseeing	+10	+20
Bicycle riding	+19	+29
Picnicking	+20	+31
Motor boating	+10	No estimate
Non-pool swimming	+19	+29
Canoeing/kayaking	+21	+30
Fishing	-5	-10
Camping	+10	+20
Hunting	-15	-21

*Source: IAC 2003*

The RCO has not developed potential outdoor recreation participation trends based on the new SCORP data collection process at this time. However, draft SCORP data do indicate the existing frequency of participation and the “desire” for future participation in outdoor recreation activities. This information is presented in Table 5.4-2, but only for the entire State, not the Columbia River Plateau Region at this time. As can be seen in Table 5.4-2, not only do some activities have high participation rates, but many are also activities that state residents would like to participate in more frequently. In general, those activities that are participated in more frequently will likely require additional facilities and/or management actions to accommodate higher use levels and limit potential impacts (e.g., visitor conflict, vegetation damage, litter, etc.). However, the desire to participate more frequently in an activity does not necessarily translate into actual use given typical constraints on recreation participation (e.g., leisure time, budgets, weather, etc.).

**Table 5.4-2. Estimated current participation levels and desire for future participation levels in select recreation activities in Washington State (2007).<sup>1</sup>**

Activity Category	Current Participation Level (percent) <sup>2</sup>	Total Times Participated <sup>3</sup>	Desired Potential Future Participation Level (percent) <sup>4</sup>	Percent Change in Participation
Walking/Hiking	78%	125,135,760	69%	- 9%
Nature-based activities	56%	61,356,771	57%	+ 1%
Bicycle Riding	33%	18,953,890	53%	+ 20%
Picnicking	48%	14,693,065	70%	+ 22%
Sightseeing	43%	13,044,023	70%	+ 27%
Water-based activities	36%	12,322,768	71%	+ 35%
Fishing	15%	4,436,698	51%	+ 36%
Camping	18%	3,505,253	68%	+ 50%

<sup>1</sup> All data presented in Table 5.4-2 is preliminary and is subject to change based on further analysis by RCO.

<sup>2</sup> Percent of state population that indicated desire to participate in each activity category at least once in the past year.

<sup>3</sup> Total number of times state residents participated in each activity category.

<sup>4</sup> Percent of state population that indicated they would like to participate in each activity category more frequently.

Source: RCO 2007 (unpublished preliminary SCORP data).

#### 5.4.2 Outdoor Recreation in American Life: A National Assessment of Demand and Supply Trends

A previous National Survey on Recreation and the Environment report entitled Outdoor Recreation in American Life (Cordell et al. 1999) provides a comprehensive analysis of future trends in outdoor recreation participation for the U.S., as well as for specific regions. Washington State, including the Project vicinity, is considered to be within the Pacific Region for purposes of the Cordell et al. (1999) assessment. Other states included in the Pacific Region are California, Oregon, Alaska, and Hawaii.

Using statistical models, projected changes in demographics (including age, race and ethnicity, gender, income, education, and previous experience) were used to assess likely future trends of various outdoor recreation activities through 2050. Evaluating future trends in recreation activity participation is helpful in assessing the type of recreation facilities and opportunities that may be needed in the future. Table 5.4-3 provides a summary of participation projections for popular activities in the Project vicinity and region (given the short time frame of this recreation action plan, only projections through 2020 are provided).

**Table 5.4-3. Recreation activity participation projections through 2020.<sup>1</sup>**

Recreation Activity	1995	Percent Change (%)		
		2000	2010	2020
Walking	21.10	8%	23%	34%
Non-consumptive wildlife activities	16.70	8%	23%	37%
Family gatherings	19.30	7%	20%	30%
Sightseeing	18.50	9%	26%	42%
Visiting a beach	20.70	8%	21%	33%
Picnicking	15.80	7%	20%	31%
Visiting historic places	13.80	8%	22%	33%
Hiking	10.90	8%	23%	34%
Non-pool swimming	11.60	6%	19%	29%
Fishing	7.50	5%	12%	20%
Biking	9.80	6%	19%	29%
Developed camping	8.80	6%	19%	32%
Primitive camping	5.60	5%	13%	23%
Motor boating	6.30	7%	22%	32%
Hunting	1.70	-6%	-15%	-21%
Backpacking	3.80	5%	12%	23%
Rafting/floating	2.30	5%	20%	30%
Canoeing	1.20	6%	21%	30%

<sup>1</sup> Projections are for the Pacific Region, which includes Washington.

<sup>2</sup> 1995 baseline totals for numbers of participants in millions.

<sup>3</sup> Projections are provided in 10-year increments from 2000–2020. Percent change provided by decade based on 1995 baseline data.

Source: Cordell et al. 1999

These activity participation projections indicate that participation in outdoor activities is expected to increase by 2020 and beyond. Some activities will experience modest growth (e.g., fishing, primitive camping, backpacking), while others will experience more robust growth (e.g., rafting/floating, motor boating, canoeing, sightseeing, hiking). Only hunting is expected to decrease in terms of number of participants in the Pacific Region. If, as predicted, the number of participants in these various activities increases over time, increased pressure will be placed on existing recreation areas. New recreation areas and/or changes in management strategies in the region will likely be needed to accommodate increased future participation in outdoor recreation activities.

### **5.4.3 Demographic-Related Recreation Use Trends**

A discussion of recreation activity participation trends is incomplete without additionally noting anticipated population and demographic changes. Population and demographics tend to be one of the major determinants of recreation participation trends (Cordell et al. 2004; Kakoyannis and Stankey 2002). One of the interesting population trends that has been noted recently is the migration of people to traditionally rural areas because of the presence of environmental amenities, such as high federal/state land ownership, numerous recreation opportunities, and few extractive industries, among others. Specific to the Project area and region, counties in the interior Columbia River basin experiencing recent growth typically have an abundance of these types of environmental amenities (Troy 1998).

For Washington, the state population is expected to continue to increase in the near term (next 5-years), particularly due to immigration from other states (especially California and Oregon). The Office of Financial Management (OFM) estimates that the 2007 state population is approximately 6,488,000 (OFM 2007). By 2012, the state population is anticipated to grow to approximately 7,078,000, an increase of approximately 9 percent (OFM 2006). Population increases are expected not only in existing major population centers (e.g., along the I-5 corridor), but also in communities that have traditionally been categorized as rural, including the Project area and vicinity. The increase in local and statewide population will likely result in more participants in outdoor activities over time.

As a population ages, participation in recreational activities, especially high-intensity activities (e.g., waterskiing), tends to decrease. In fact, recent research indicates that activity participation drops significantly as a population ages (OFM 2006). For example, in the U.S., nearly 80 percent of 6 to 12 year olds participate in at least one outdoor recreation activity, while less than 35 percent of adults over 65 participate in at least one outdoor activity. However, it has been noted that the population of 70 to 90 year olds tends to be healthier and more mobile than in the past, thus prolonging their participation in certain recreational activities (Wood et al. 1990). Thus, while participation may drop rapidly for some activities as a population ages, other activities will likely increase or at a minimum remain constant, especially as more focus is placed on healthy, active living.

Significant differences also exist in activity participation among racial and ethnic groups. In Washington, while non-Hispanic Whites will continue to make up the majority of the population, Hispanics and Non-Hispanic Asians/Pacific Islanders are expected to see significant increases in their populations by 2025 (US Census Bureau 1996). In general and compared to Non-Hispanic Whites, minority groups tend to use developed, urban recreation facilities that are in proximity to their homes, visit sites in larger groups, participate in more sport-type activities, stay longer at recreation sites and facilities (day use only), and participate in land-based more than water-based activities (Manning 1999). While it is not completely understood how racial/ethnic shifts in population will impact recreation participation, it can be expected that the recreation needs and preferences of the population may change over time.

## **6.0 Short-Term Regional and Project Area Recreation Needs**

A recent assessment of recreational uses of water resources found that “water is an important component of recreational opportunities and experiences” (Kakoyannis and Stankey 2002). This study also found that proximity to water enhances the quality of experience for activities that tend not to be water-dependent (e.g., hiking, bike riding, picnicking, etc.). Given the nature of the Project’s focus on water resources, it is anticipated that much of the need for recreation sites, facilities, and use areas in the next 5 years will be centered on opportunities on and/or near the Project reservoir and along the immediate shoreline. This is supported by recent estimates of existing use in the Project area and region, which indicate growth in water-based and water-enhanced activities (see Section 5.0).

### **6.1 Short-Term Recreation Needs in the Mid-Columbia River Region**

The RCO is currently developing an updated assessment that addresses statewide recreation needs by region. Some of these identified needs are likely applicable to the Mid-Columbia River Region.

The primary purpose of the 2002 Assessment of Outdoor Recreation in Washington State, a SCORP document, and the 2007 SCORP data is to provide information on outdoor recreation issues and opportunities to decision-makers (IAC 2002). The following are listed as statewide recreation concerns:

- There is a need to provide better-managed lands and facilities supporting virtually all outdoor recreation categories;
- Linear (i.e., trail-based) activities (e.g., walking, hiking, biking) are the most popular activities;
- Nature and natural settings play a vital role in many recreational activities and pursuits;
- Preserving habitat for fish and wildlife is important due to high statewide participation rates in nature-dependent activities (e.g., wildlife viewing, photography, hunting, fishing, etc.);
- Acceptable means of financing the operations and maintenance of public lands and facilities need to be determined; and
- Improved public recreation data and facilities inventories are needed to ensure effective utilization of public resources.

The Washington IAC 2002 Assessment, and data from the Washington RCO 2007 Assessment, also provides an analysis of the need for recreation facilities in the state. This analysis is based on actual recreation participation and an inventory of land and recreation facilities; preference is not a factor in this assessment.



Conclusions of the needs analysis that are potentially relevant to the Project include the following:

- Most outdoor recreation takes place close to home on local lands;
- Federal, state, and private lands may experience fewer numbers of visitors (compared to the past decade), but will likely still experience considerable use levels and the challenges (e.g., crowding, conflict, displacement, resource degradation, etc.) that accompany these use levels;
- Public frustration with recreation agencies seems to indicate a need for better communication among providers and users; and
- Reports of increased crowding and conflict in virtually all types of recreation indicate a need to provide better-managed land and facilities.

Additionally, the 2002 Assessment provides specific recommendations for hydroelectric projects. IAC recommendations for hydroelectric projects in 2002 include the following:

- Enhance recreational opportunities with new trails, walkways, and paths for pedestrian and bicycle use;
- Manage dispersed shoreline camping;
- Improve access for water-based recreation activities;
- Provide additional opportunities for non-consumptive recreation activities (e.g., wildlife viewing, photography, etc.); and
- Improve operations and maintenance at existing and new recreation sites.

The 2002 SCORP makes several recommendations and identifies several findings pertinent to the Plan. These findings are grouped below into three categories: water access, State Park camping opportunities, and resource protection.

#### *Water Access*

- Strong public demand for water access continues to be unmet, numerous boat launching locations are substandard and in need of repairs and maintenance. Much of the water is inaccessible from land base.
- Priority should be given to water access projects that serve multiple state objectives (recreation access, habitat preservation, and watershed restoration), and provide trail opportunities.
- IAC recommends that State Parks continue to provide services for recreational boating, while considering additional facilities on significant water bodies such as the Columbia River.
- The IAC favors trail development projects that include high projected use, barrier-free opportunities, linkage between and among communities and other trails, water access, scenic values, and wildlife values.

#### *State Park Camping*

- IAC recommends that State Parks expand camping opportunities for those seeking predominately natural settings; and expand existing parks, especially those convenient to populated areas.

**2007 Recreation Action Plan Update**

---

- There is a need for additional State Park lands and facilities as well as a need to properly care for lands and facilities already in public ownership to serve the growing population.
- Washington State Parks is struggling to continue to meet high demand with declining resources.
- When funds are available, priority consideration should be given to State Park acquisitions and development that expand camping opportunities, provide additional types of compatible use at existing sites, solidify ownership by acquiring in-holdings, and preserve a site or feature of statewide significance for future use as a facility.

*Resource Protection*

- There is a need for the acquisition and protection of additional natural areas and wildlife habitat, as well as a need to properly care for lands already in public ownership.
- When considering the acquisition of natural areas, priority should be given to sites that represent a natural area type, possess excellent ecological quality and/or diversity, offer connectivity and long-term manageability, protect critical habitat and/or threatened species, and (where appropriate) have potential for low-impact public use.

This Plan is informed by the preceding SCORP recommendations. Identified local needs and actions were prioritized within the framework of statewide suggestions. In particular, this Plan prioritizes access to water through investment in boat launches as well as non-consumptive recreation activities on the Project lands and waters.

## **6.2 Proposed Short-Term Recreation Needs or Actions at the Wells Project**

Short-term recreation needs or actions at the Project that were identified during the development of this Plan. Stakeholder groups met with District representatives and discussed possible recreation needs or actions on or near Project lands and waters. Stakeholder groups were invited to identify specific short-term recreation needs or actions. Request letters from stakeholders are included in Exhibit E. Stakeholder needs or actions identified in writing have been summarized below.

### **6.2.1 District Identified Short-Term Recreation Needs or Action**

The District identified short-term recreation needs or actions. These individual needs and actions would be located either inside, outside, or split by the existing FERC Project boundary, as indicated below. The following were identified as needs or actions:

- Design, construct, and operate a new boat launch at Carpenter Island below Wells Dam. This action would be located inside the FERC Project boundary, except for the existing (and proposed) access road from the highway;
- Paint the restrooms, perform maintenance, and enhance signage/kiosk at the Wells Dam Vista Overlook. This action would be located inside the FERC Project boundary, except for the access road from the highway; and

- Complete and implement an annual program for conducting dock condition assessments and necessary repairs on District-owned docks and floats. These actions would be located inside the FERC Project boundary.

## **6.2.2 Stakeholder Identified Short-Term Recreation Needs**

### *Brewster*

The City of Brewster identified short-term recreation needs or actions. These individual needs and actions would be located either inside, outside, or split by the existing FERC Project boundary, as indicated below. The following were identified as needs or actions:

- Address the limited camping sites available in the area. This action would be outside the FERC Project boundary;
- Address the limited boat access available in the area (existing Columbia Cove Park). This action would be inside the FERC Project boundary;
- Add additional parking for Columbia Cove Park. This action would be outside the FERC Project boundary;
- Widen existing boat launch to 2 lanes at Columbia Cove Park. This action would be inside the FERC Project boundary;
- Add additional ramps, docks and parking on another site. This action would be split between inside and outside of the FERC Project boundary;
- Add swimming delineator buoys for the swimming area at Columbia Cove Park (already purchased by the District and will be installed in 2007). This action would be inside the FERC Project boundary;
- Fix the cracked City swimming pool (Phase 1 - Conduct an engineering assessment of the problem and define a solution(s); Phase 2 - implement a solution). This action would be outside the FERC Project boundary;
- Help upgrade the City's Sewage Treatment Plant. This action would be outside the FERC Project boundary;
- Build a viewing/fishing platform on the Brewster waterfront trail. This action would be inside the FERC Project boundary;
- Add overhead lighting to the waterfront trail to help alleviate vandal issues on the trail. This action would be inside the FERC Project boundary;
- Lengthening the Brewster waterfront trail, connecting park facilities and additional parking is needed for the waterfront trail. This action would be split between inside and outside of the FERC Project boundary; and
- Complete all previous FERC-approved projects proposed in the 2002 RAP Update (see Exhibit A). This action would be inside the FERC Project boundary.

**2007 Recreation Action Plan Update**

---

*Bridgeport*

The City of Bridgeport identified short-term recreation needs or actions. These individual needs and actions would be located either inside, outside or split by the existing FERC Project boundary, as indicated below. The following were identified as needs or actions:

- Move the boat launch ramp at Marina Park to the nearby USACOE boat launch and add a handling dock on the inside (would require further approval by the USACOE). This action would be inside the FERC Project boundary;
- Extend the existing rock jetty a short distance at the USACOE boat ramp (would require further study and approval by the Corps). This action would be inside the FERC Project boundary;
- Expand the RV campground at Marina Park through: 1) reconfiguring the existing RV campsites for the most efficient use of space, 2) expanding the RV campsites uphill, or 3) expanding the RV campsites downstream approximately 300 feet. This action would be split between inside and outside of the FERC Project boundary;
- Add a trail from the USACOE boat launch along the shoreline to 2nd Street. This action would be inside the FERC Project boundary;
- Address tree root invasion at camp sites in the RV camping area at Marina Park. This action would be split between inside and outside of the FERC Project boundary;
- Address the root invasion and erosion damage walking path upslope of the lagoon at Marina Park. This action would be split between inside and outside of the FERC Project boundary;
- Discontinue the use of City of Bridgeport water for the RV campground area at Marina Park. This action would be split between inside and outside of the FERC Project boundary;
- Upgrade the existing current lift station for sanitary dumping of RV sewage at Marina Park. This action would be inside the FERC Project boundary;
- Decommission the old boat ramp after use is relocated to the adjacent USACOE boat ramp. This action would be inside the FERC Project boundary;
- Install restroom auto flushers. This action would be outside the FERC Project boundary; and
- Install 3 grey water sumps. This action would be split between inside and outside of the FERC Project boundary.

*Pateros*

The City of Pateros identified short-term recreation needs or actions. These individual needs and actions would be located either inside, outside, or split by the existing FERC Project boundary, as indicated below. The following were identified as needs or actions:

- Winter Boat Launch:
  - Continue annual dock inspection and maintenance. This action would be inside the FERC Project boundary;
  - Add/improve/maintain directional signs (for local public access amenities). This action would be inside the FERC Project boundary;

- Add/improve/maintain water safety signs. This action would be inside the FERC Project boundary;
- Add/improve tent camping sand-pit/BBQ for kayakers and canoeists (including water trail access). This action would be outside the FERC Project boundary;
- Improve usability of the existing boat ramp during all seasons (address steepness, drop-off, and length of ramp lane). This action would be inside the FERC Project boundary; and
- Improve parking. This action would be outside the FERC Project boundary.
- Memorial Park:
  - Continue dock inspection and maintenance. This action would be inside the FERC Project boundary;
  - Continue restroom maintenance painting/seal coating (inside and outside). This action would be outside the FERC Project boundary;
  - Continue gazebo/picnic shelter painting/seal coating maintenance. This action would be outside the FERC Project boundary;
  - Add/improve/maintain directional signs (for local public access amenities). This action would be outside the FERC Project boundary;
  - Re-evaluate asphalt pathway and implement maintenance for tree roots and cracks. This action would be split between inside and outside of the FERC Project boundary;
  - Extend asphalt pathway (scenic trail development) to eastern end of the city limits. This action would be split between inside and outside of the FERC Project boundary;
  - Add/improve pavilion or similar structure (viewing, sitting, riverfront setting, shaded hydro scoring box area) with potential for a pier. This action would be inside the FERC Project boundary;
  - Provide a sidewalk along the street. This action would be outside the FERC Project boundary;
  - Evaluate ADA accessibility and define ADA parking spaces as feasible. This action would be outside the FERC Project boundary;
  - Add/improve themed water feature near the playground. This action would be outside the FERC Project boundary; and
  - Provide an ADA-accessible fishing pier/platform where fishing success is known. This action would be inside the FERC Project boundary.
- Methow Boat Launch:
  - Continue dock inspection and maintenance. This action would be inside the FERC Project boundary;
  - Continue restroom maintenance painting/seal coating (inside and outside). This action would be outside the FERC Project boundary;
  - Add/improve/maintain directional signs (for local public access amenities) . This action would be outside the FERC Project boundary;
  - Add/improve/maintain water safety signs. This action would be outside the FERC Project boundary;
  - Install restroom auto flushers for safety and energy efficiency. This action would be outside the FERC Project boundary;



**2007 Recreation Action Plan Update**

---

- Evaluate asphalt pathway and implement maintenance for tree roots and cracks. This action would be split between inside and outside of the FERC Project boundary;
- Evaluate and implement tent camping sand-pit/BBQ for kayakers and canoeists (including water trail access), and bicyclists. This action would be outside the FERC Project boundary;
- Address silt bar deposits which are a hindrance to boaters. This action would be inside the FERC Project boundary;
- Remove aquatic growth which is a hindrance to boaters. This action would be inside the FERC Project boundary; and
- Improve landscaping including removal of fish cleaning station. This action would be split between inside and outside of the FERC Project boundary.
- Peninsula Park:
  - Continue restroom maintenance painting/seal coating (inside and outside). This action would be outside the FERC Project boundary;
  - Continue gazebo and picnic shelter painting/seal coating maintenance. This action would be outside the FERC Project boundary;
  - Add/improve/maintain directional signs (for local public access amenities). This action would be outside the FERC Project boundary;
  - Install restroom auto flushers for safety and energy efficiency. This action would be outside the FERC Project boundary;
  - Evaluate asphalt pathway and implement maintenance for tree roots and cracks. This action would be outside the FERC Project boundary;
  - Conduct a study of the swimming area including facility improvements (sandy beach, swim float, swimming area delineator, and access), visitor safety and watercraft traffic, and environmental quality (water quality and flushing, sedimentation, aquatic vegetation growth, and sensitive species). Implement the preferred alternative. This action would be inside the FERC Project boundary;
  - Reconstruct playground fall protection area with pads on a concrete base and install a drain. This action would be outside the FERC Project boundary;
  - Address silt bar deposits which are a hindrance to boating use and to the swimming cove. This action would be inside the FERC Project boundary; and
  - Remove aquatic growth which is a hindrance to the swimming cove. This action would be inside the FERC Project boundary.
- Riverside Drive Recreation Access Site:
  - Continue restroom maintenance painting/seal coating (inside and outside). This action would be outside the FERC Project boundary;
  - Add/improve/maintain directional signs (for local public access amenities). This action would be outside the FERC Project boundary;
  - Add restroom electricity. This action would be outside the FERC Project boundary;
  - Restroom auto flushers installation for safety and energy efficiency. This action would be outside the FERC Project boundary;
  - Upgrade tennis lights for safety and energy efficiency. This action would be outside the FERC Project boundary;

- Resurface existing tennis courts as standard maintenance requirement, ongoing maintenance. This action would be outside the FERC Project boundary; and
- Improve landscape including painting shed and backdrop. This action would be split between inside and outside of the FERC Project boundary.
- All Sites:
  - Provide water rights for public shoreline park sites requiring water. This action would be outside the FERC Project boundary.

### *Fort Okanogan*

The Friends of Fort Okanogan identified short-term recreation needs or actions at Fort Okanogan. These individual needs and actions would all be located outside of the FERC Project boundary. The following were identified as needs or actions:

- Expand parking lot to accommodate buses, RVs and a greater number of regular vehicles;
- Enlarge picnic area so as to serve as a presentation area for speakers and demonstrators;
- Extend the current trail from the main building to the shoreline (terminating inside the FERC Project boundary);
- Increase interpretation and education information about plants and wildlife along the trail;
- Build a small playground;
- Enhance displays through construction of models of historical items, procurement of the model of Fort Okanogan and relocation of other relevant material from Wells Dam;
- Provide technical and financial assistance for the production of promotional brochures, flyers and/or related products associated with the planned 2011 Fort Okanogan Bicentennial event; and
- Assist with developing appropriate educational materials for all visitors to the site.

### *Port of Chelan County*

The Port of Chelan County identified short-term recreation needs or actions related to a proposed water trail along the Columbia, Methow, and Okanogan rivers. These individual needs and actions would all be located inside of the FERC Project boundary. The following were identified as needs or actions:

- Identify existing watercraft launch sites and categorize as primary, secondary or tertiary;
- Identify and make watercraft launch site improvements where applicable;
- Purchase and install directional signs for watercraft launch sites from the road and river;
- Purchase and install information and interpretive signs at primary watercraft launch sites;

**2007 Recreation Action Plan Update**

---

- Purchase and install carsonite information signs along rivers edge;
- Identify appropriate stop-over sites for day-use along rivers edge;
- Identify and make stop-over site improvements where applicable;
- Purchase and install information/interpretive signs at stop-over sites where applicable;
- Identify existing and appropriate potential camp sites along the rivers' edges;
- Identify and make camp site improvements where applicable;
- Purchase and install information and interpretive signs at camp sites;
- Coordinate with recreation activities to assist in map creation using GIS mapping to show access, amenities, stop-over sites, camp sites, etc.; and
- Coordinate with relicensing effort on portage options.

### **6.3 Short-Term Recreation Needs or Actions Accepted for Consideration in the 2007 RAP Update**

Once stakeholders identified proposed short-term recreation needs or actions, the District identified which actions would be further considered in the 2007 RAP Update. This decision-making process utilized several criteria to select which appropriate actions would move forward and then prioritized those actions as discussed in Section 2. The following tables detail the results for the District's decision making regarding proposed stakeholder short-term recreation needs or actions.

***THIS PAGE INTENTIONALLY LEFT BLANK.***

Table 6.3-1a. Selection and priority determination for the District identified short-term recreation needs or actions.

		FERC Project Boundary Reference— Inside, Outside or Splits the Boundary	8 Criteria Applied								2007 RAP Status	
			<i>Needed to address existing observed impacts of project operations/facilities on the recreation resource or facility.</i>	<i>Needed to provide adequate public access to existing project lands &amp; water.</i>	<i>Needed to support existing water-based activities.</i>	<i>Action is in conformance with the District's Land Use Policy.</i>	<i>Action is of key importance to local officials, governments, public agencies, or the District.</i>	<i>Action is in conformance with relevant and current agreements between the District and resource agencies.</i>	<i>Action is in conformance with the current FERC License Order approving all past RAP updates.</i>	<i>Action should more appropriately be considered during ongoing Project relicensing.</i>	<i>Priority</i>	<i>Accepted for future evaluation and consideration</i>
<b>Recommended improvements</b>												
1	Design, construct and operate a new boat launch at Carpenter Island below Wells Dam	In	X	X	X	X	X	X			H	✓
2	Wells Dam Vista Overlook-- paint restrooms, perform maintenance and enhance signage/kiosk	In		X	X	X	X	X			M	✓
3	Complete and implement annual program for conducting dock condition assessments and necessary repairs on District owned docks	In	X	X	X	X	X	X	X		H	✓

Table 6.3-1b. Selection and priority determination for the City of Brewster identified short-term recreation needs or actions.

Recommended improvements		FERC Project Boundary Reference— Inside, Outside or Splits the Boundary	8 Criteria Applied								2007 RAP Status	
			<i>Needed to address existing observed impacts of project operations/facilities on the recreation resource or facility.</i>	<i>Needed to provide adequate public access to existing project lands &amp; water.</i>	<i>Needed to support existing water-based activities.</i>	<i>Action is in conformance with the District's Land Use Policy.</i>	<i>Action is of key importance to local officials, governments, public agencies, or the District.</i>	<i>Action is in conformance with relevant and current agreements between the District and resource agencies.</i>	<i>Action is in conformance with the current FERC License Order approving all past RAP updates.</i>	<i>Action should more appropriately be considered during ongoing Project relicensing.</i>	<i>Priority</i>	<i>Accepted for future evaluation and consideration</i>
1	Address the limited camp sites available in the area	Out					X			X	L	
2	Address the limited boat access available in the area (existing Columbia Cove)	In	X	X	X	X	X	X			H	✓
3	Add additional parking at Columbia Cove Park	Out	X	X	X	X	X	X			H	✓
4	Widen existing boat launch to 2 lanes (existing Columbia Cove)	In	X	X	X	X	X	X			H	✓
5	Add additional ramps, docks and parking on another site	Split					X			X	L	
6	Add swimming delineator buoys for the swimming area ( <i>Purchased for City by District and installed in 2007</i> )	In	X	X	X	X	X	X				✓

2007 Recreation Action Plan Update

Table 6.3-1b. Selection and priority determination for the City of Brewster identified short-term recreation needs or actions.

Recommended improvements		FERC Project Boundary Reference— Inside, Outside or Splits the Boundary	8 Criteria Applied								2007 RAP Status	
			Needed to address existing observed impacts of project operations/facilities on the recreation resource or facility.	Needed to provide adequate public access to existing project lands & water.	Needed to support existing water-based activities.	Action is in conformance with the District's Land Use Policy.	Action is of key importance to local officials, governments, public agencies, or the District.	Action is in conformance with relevant and current agreements between the District and resource agencies.	Action is in conformance with the current FERC License Order approving all past RAP updates.	Action should more appropriately be considered during ongoing Project relicensing.	Priority	Accepted for future evaluation and consideration
7	Fix the cracked City swimming pool. (Phase 1 - Conduct an engineering assessment of the problem and define a solution(s); Phase 2 - implement a solution)	Out					X			X	L	✓
8	Help upgrade the City of Brewster's Sewage Treatment Plant	Out					X			X	L	
9	Build a viewing/fishing platform on the Brewster Waterfront Trail (This was addressed in the 1997 RAP Update, and an alternate site was developed and dock was installed at Columbia Cove)	In					X		X		L	



Table 6.3-1b. Selection and priority determination for the City of Brewster identified short-term recreation needs or actions.

		FERC Project Boundary Reference— Inside, Outside or Splits the Boundary	8 Criteria Applied								2007 RAP Status	
			<i>Needed to address existing observed impacts of project operations/facilities on the recreation resource or facility.</i>	<i>Needed to provide adequate public access to existing project lands &amp; water.</i>	<i>Needed to support existing water-based activities.</i>	<i>Action is in conformance with the District's Land Use Policy.</i>	<i>Action is of key importance to local officials, governments, public agencies, or the District.</i>	<i>Action is in conformance with relevant and current agreements between the District and resource agencies.</i>	<i>Action is in conformance with the current FERC License Order approving all past RAP updates.</i>	<i>Action should more appropriately be considered during ongoing Project relicensing.</i>	<i>Priority</i>	<i>Accepted for future evaluation and consideration</i>
<b>Recommended improvements</b>												
10	Add overhead lighting to the waterfront trail to help alleviate vandal issues on the trail  <i>(Upgrades and replacement of existing lighting was completed for the 2002 RAP Update no additional lighting is needed)</i>	In					X		X		L	
11	Lengthening the Brewster waterfront trail, connecting park facilities and adding parking is needed for the waterfront trail	Split					X			X	L	
12	Complete all previous FERC-approved projects proposed in the 2002 RAP Update	In					X		X		L	

Table 6.3-1c. Selection and priority determination for the City of Bridgeport identified short-term recreation needs or actions.

Recommended improvements		FERC Project Boundary Reference— Inside, Outside or Splits the Boundary	8 Criteria Applied								2007 RAP Status	
			Needed to address existing observed impacts of project operations/facilities on the recreation resource or facility.	Needed to provide adequate public access to existing project lands & water.	Needed to support existing water-based activities.	Action is in conformance with the District's Land Use Policy.	Action is of key importance to local officials, governments, public agencies, or the District.	Action is in conformance with relevant and current agreements between the District and resource agencies.	Action is in conformance with the current FERC License Order approving all past RAP updates.	Action should more appropriately be considered during ongoing Project relicensing.	Priority	Accepted for future evaluation and consideration
1	Move the Marina Park boat launch ramp to the nearby USACOE boat launch and add a handling float on the inside <i>(Requires further approval by the USACOE)</i>	In	X	X	X	X	X	X			H	✓
2	Extend the existing rock jetty a short distance at the USACOE boat launch <i>(Requires further study and approval by the USACOE)</i>	In	X	X	X	X	X	X			H	✓
3	Expand the RV campground at Marina Park through 1) reconfiguring the existing RV campsites for the most efficient use of space, 2) expanding the RV campsites uphill or 3) expanding the RV campsites downstream approximately 300 feet	Split					X			X	L	
4	Add a trail from the USACOE boat launch along the shoreline to 2nd Street	In					X			X	L	

Table 6.3-1c. Selection and priority determination for the City of Bridgeport identified short-term recreation needs or actions.

Recommended improvements		FERC Project Boundary Reference— Inside, Outside or Splits the Boundary	8 Criteria Applied								2007 RAP Status	
			Needed to address existing observed impacts of project operations/facilities on the recreation resource or facility.	Needed to provide adequate public access to existing project lands & water.	Needed to support existing water-based activities.	Action is in conformance with the District's Land Use Policy.	Action is of key importance to local officials, governments, public agencies, or the District.	Action is in conformance with relevant and current agreements between the District and resource agencies.	Action is in conformance with the current FERC License Order approving all past RAP updates.	Action should more appropriately be considered during ongoing Project relicensing.	Priority	Accepted for future evaluation and consideration
5	Address the tree root invasion at camp sites in the RV camping area of Marina Park (Maintenance issue)	Split		X	X	X	X	X			M	✓
6	Address the root invasion and erosion damage along walking path upslope of the lagoon at Marina Park (Being addressed and repaired per the 2002 RAP)	Split					X		X		L	
7	Discontinue the use of City of Bridgeport water for the RV camping area at Marina Park (Would require additional water rights)	Split					X			X	L	
8	Upgrade the existing current lift station for sanitary dumping of RV sewage at Marina Park (Maintenance issue)	In				X	X	X			M	✓
9	Decommission the old boat ramp after use is relocated to the adjacent USACOE boat ramp	In	X	X	X	X	X	X			H	✓

2007 Recreation Action Plan Update

Table 6.3-1c. Selection and priority determination for the City of Bridgeport identified short-term recreation needs or actions.

		FERC Project Boundary Reference— Inside, Outside or Splits the Boundary	8 Criteria Applied								2007 RAP Status	
			<i>Needed to address existing observed impacts of project operations/facilities on the recreation resource or facility.</i>	<i>Needed to provide adequate public access to existing project lands &amp; water.</i>	<i>Needed to support existing water-based activities.</i>	<i>Action is in conformance with the District's Land Use Policy.</i>	<i>Action is of key importance to local officials, governments, public agencies, or the District.</i>	<i>Action is in conformance with relevant and current agreements between the District and resource agencies.</i>	<i>Action is in conformance with the current FERC License Order approving all past RAP updates.</i>	<i>Action should more appropriately be considered during ongoing Project relicensing.</i>	<i>Priority</i>	<i>Accepted for future evaluation and consideration</i>
<b>Recommended improvements</b>												
10	Install restroom auto flushers	Out				X	X	X			L	✓
11	Install 3 grey water sumps	Split			X	X	X	X			M	✓

Table 6.3-1d. Selection and priority determination for the City of Pateros identified short-term recreation needs or actions.

Recommended improvements		FERC Project Boundary Reference— Inside, Outside or Splits the Boundary	8 Criteria Applied								2007 RAP Status	
			Needed to address existing observed impacts of project operations/facilities on the recreation resource or facility.	Needed to provide adequate public access to existing project lands & water.	Needed to support existing water-based activities.	Action is in conformance with the District's Land Use Policy.	Action is of key importance to local officials, governments, public agencies, or the District.	Action is in conformance with relevant and current agreements between the District and resource agencies.	Action is in conformance with the current FERC License Order approving all past RAP updates.	Action should more appropriately be considered during ongoing Project relicensing.	Priority	Accepted for future evaluation and consideration
	<b>Winter Boat Launch</b>											
1	Conduct annual dock inspection and maintenance	In	X	X	X	X	X	X	X		M	✓
2	Add/improve/maintain directional signs (for local public access amenities) (District could possibly provide laminated GIS maps)	Out		X	X	X	X	X			M	✓
3	Add/improve/maintain water safety signs (Okanogan County Sheriff's Office will provide signage at each boat launch and the District will install)	In		X	X	X	X	X			H	✓
4	Add/improve tent camping sand-pit/BBQ for kayakers and canoeists (including water trail access)	Out					X			X	L	
5	Improve usability of the existing boat ramp during all seasons (address steepness, drop-off, and length of ramp lane)	In	X	X	X	X	X	X			H	✓

2007 Recreation Action Plan Update

**Table 6.3-1d. Selection and priority determination for the City of Pateros identified short-term recreation needs or actions.**

		FERC Project Boundary Reference— Inside, Outside or Splits the Boundary	8 Criteria Applied								2007 RAP Status	
			<i>Needed to address existing observed impacts of project operations/facilities on the recreation resource or facility.</i>	<i>Needed to provide adequate public access to existing project lands &amp; water.</i>	<i>Needed to support existing water-based activities.</i>	<i>Action is in conformance with the District's Land Use Policy.</i>	<i>Action is of key importance to local officials, governments, public agencies, or the District.</i>	<i>Action is in conformance with relevant and current agreements between the District and resource agencies.</i>	<i>Action is in conformance with the current FERC License Order approving all past RAP updates.</i>	<i>Action should more appropriately be considered during ongoing Project relicensing.</i>	<i>Priority</i>	<i>Accepted for future evaluation and consideration</i>
<b>Recommended improvements</b>												
6	Improve parking (concern for recognized availability) <i>(Assume parking and circulation would be designed in conjunction with a redesigned boat launch if feasible)</i>	Out	X	X	X	X	X	X			H	✓
	<b>Memorial Park</b>											
7	Conduct annual dock inspection and maintenance	In	X	X	X	X	X	X	X		M	✓
8	Restroom maintenance painting/seal coating (inside and outside) <i>(Maintenance issue)</i>	Out		X	X	X	X	X			M	✓
9	Gazebo/picnic shelter painting/seal coating <i>(Maintenance issue)</i>	Out		X	X	X	X	X			M	✓
10	Add/improve/maintain directional signs (for local public access amenities) <i>(District could possibly provide laminated GIS maps)</i>	Out		X	X	X	X	X			M	✓
11	Re-evaluate asphalt pathway and implement maintenance for tree roots and cracks <i>(Maintenance issue)</i>	Split		X	X	X	X	X			L	✓

Table 6.3-1d. Selection and priority determination for the City of Pateros identified short-term recreation needs or actions.

Recommended improvements		FERC Project Boundary Reference— Inside, Outside or Splits the Boundary	8 Criteria Applied								2007 RAP Status	
			<i>Needed to address existing observed impacts of project operations/facilities on the recreation resource or facility.</i>	<i>Needed to provide adequate public access to existing project lands &amp; water.</i>	<i>Needed to support existing water-based activities.</i>	<i>Action is in conformance with the District's Land Use Policy.</i>	<i>Action is of key importance to local officials, governments, public agencies, or the District.</i>	<i>Action is in conformance with relevant and current agreements between the District and resource agencies.</i>	<i>Action is in conformance with the current FERC License Order approving all past RAP updates.</i>	<i>Action should more appropriately be considered during ongoing Project relicensing.</i>	<i>Priority</i>	<i>Accepted for future evaluation and consideration</i>
12	Extend asphalt pathway (scenic trail development) to eastern end of city limits	Split					X			X	L	
13	Add/improve pavilion or similar structure (viewing, sitting, riverfront setting, shaded hydro scoring box area) with potential for a pier	In					X			X	L	
14	Provide a sidewalk along the street (Note: RV campers park in this area)	Out					X			X	L	
15	Evaluate ADA accessibility and define ADA parking spaces as feasible and implementation	Out		X	X	X	X	X	X		H	✓
16	Add/improve themed water feature near playground (rock rip-rap shoreline protection is unsafe for water access needs) (A playground exists by City Hall)	Out					X			X	L	
17	Provide an ADA-accessible fishing pier/platform where fishing success is adequate	In					X			X	L	



**2007 Recreation Action Plan Update**

**Table 6.3-1d. Selection and priority determination for the City of Pateros identified short-term recreation needs or actions.**

Recommended improvements		FERC Project Boundary Reference— Inside, Outside or Splits the Boundary	8 Criteria Applied								2007 RAP Status	
			<i>Needed to address existing observed impacts of project operations/facilities on the recreation resource or facility.</i>	<i>Needed to provide adequate public access to existing project lands &amp; water.</i>	<i>Needed to support existing water-based activities.</i>	<i>Action is in conformance with the District's Land Use Policy.</i>	<i>Action is of key importance to local officials, governments, public agencies, or the District.</i>	<i>Action is in conformance with relevant and current agreements between the District and resource agencies.</i>	<i>Action is in conformance with the current FERC License Order approving all past RAP updates.</i>	<i>Action should more appropriately be considered during ongoing Project relicensing.</i>	<i>Priority</i>	<i>Accepted for future evaluation and consideration</i>
	<b><i>Methow Boat Launch</i></b>											
18	Conduct annual dock inspection and maintenance	In	X	X	X	X	X	X	X		M	✓
19	Restroom maintenance painting/seal coating (inside and outside) <i>(Maintenance issue)</i>	Out		X	X	X	X	X			M	✓
20	Add/improve/maintain directional signs (for local public access amenities) <i>(District could possibly provide laminated GIS maps)</i>	Out		X	X	X	X	X			M	✓
21	Add/improve/maintain water safety signs <i>(Okanogan County Sheriff's Office will provide signage at each boat launch and the District will install)</i>	In		X	X	X	X	X			H	✓
22	Install restroom auto flushers for safety and energy efficiency <i>(When old flushers replacement is needed, will use auto flushers)</i>	Out				X	X	X			L	✓
23	Evaluate asphalt pathway and implement maintenance for tree roots and cracks <i>(Maintenance issue)</i>	Split		X	X	X	X	X			L	✓

Table 6.3-1d. Selection and priority determination for the City of Pateros identified short-term recreation needs or actions.

Recommended improvements		FERC Project Boundary Reference— Inside, Outside or Splits the Boundary	8 Criteria Applied								2007 RAP Status	
			Needed to address existing observed impacts of project operations/facilities on the recreation resource or facility.	Needed to provide adequate public access to existing project lands & water.	Needed to support existing water-based activities.	Action is in conformance with the District's Land Use Policy.	Action is of key importance to local officials, governments, public agencies, or the District.	Action is in conformance with relevant and current agreements between the District and resource agencies.	Action is in conformance with the current FERC License Order approving all past RAP updates.	Action should more appropriately be considered during ongoing Project relicensing.	Priority	Accepted for future evaluation and consideration
24	Evaluate and implement tent camping sand-pit/BBQ for kayakers and canoeists (including water trail access), and bicyclists	Out					X			X	L	
25	Address silt bar deposits which are a hindrance to boaters (Currently being studied under relicensing efforts)	In					X			X	L	
26	Remove aquatic growth which is a hindrance to boaters (Currently being studied under relicensing efforts)	In					X			X	L	
27	Improve landscaping including removal of fish cleaning station (Pending completion per the 2002 RAP Update. Removal of fish cleaning station completed)	Split					X		X		L	✓
	<b>Peninsula Park</b>											
28	Restroom maintenance painting/seal coating (inside and outside) (Maintenance issue)	Out		X	X	X	X	X	X		M	✓

2007 Recreation Action Plan Update

Table 6.3-1d. Selection and priority determination for the City of Pateros identified short-term recreation needs or actions.

		FERC Project Boundary Reference— Inside, Outside or Splits the Boundary	8 Criteria Applied								2007 RAP Status	
			Needed to address existing observed impacts of project operations/facilities on the recreation resource or facility.	Needed to provide adequate public access to existing project lands & water.	Needed to support existing water-based activities.	Action is in conformance with the District's Land Use Policy.	Action is of key importance to local officials, governments, public agencies, or the District.	Action is in conformance with relevant and current agreements between the District and resource agencies.	Action is in conformance with the current FERC License Order approving all past RAP updates.	Action should more appropriately be considered during ongoing Project relicensing.	Priority	Accepted for future evaluation and consideration
<b>Recommended improvements</b>												
29	Gazebo/picnic shelter painting/seal coating (Maintenance issue)	Out		X	X	X	X	X	X		M	✓
30	Add/improve/maintain directional signs (for local public access amenities) (Douglas PUD could possibly provide laminated GIS maps)	Out		X	X	X	X	X			M	✓
31	Install restroom auto flushers for safety and energy efficiency (When old flushers replacement is needed, will use auto flushers)	Out				X	X	X			L	✓
32	Evaluate asphalt pathway and implement maintenance for tree roots and cracks (Maintenance issue)	Out		X	X	X	X	X	X		L	✓

Table 6.3-1d. Selection and priority determination for the City of Pateros identified short-term recreation needs or actions.

Recommended improvements		FERC Project Boundary Reference— Inside, Outside or Splits the Boundary	8 Criteria Applied								2007 RAP Status	
			Needed to address existing observed impacts of project operations/facilities on the recreation resource or facility.	Needed to provide adequate public access to existing project lands & water.	Needed to support existing water-based activities.	Action is in conformance with the District's Land Use Policy.	Action is of key importance to local officials, governments, public agencies, or the District.	Action is in conformance with relevant and current agreements between the District and resource agencies.	Action is in conformance with the current FERC License Order approving all past RAP updates.	Action should more appropriately be considered during ongoing Project relicensing.	Priority	Accepted for future evaluation and consideration
33	Conduct a study of the swimming area at Peninsula Park including facility improvements (sandy beach, swim float, swimming area delineator, & access), visitor safety & watercraft traffic, & environmental quality (water quality and flushing, sedimentation, aquatic vegetation growth, and sensitive species); Implement the preferred alternative	In	X	X	X	X	X	X	X		L	✓
34	Reconstruct playground fall protection area with pads on a concrete base and install a drain (Maintenance issue)	Out				X	X	X	X		L	✓
35	Address silt bar deposits which are a hindrance to boating use and to the swimming cove (Currently being studied under relicensing efforts)	In					X			X	L	
36	Remove aquatic growth which is a hindrance to swimming cove (Currently being studied under relicensing efforts)	In					X			X	L	

2007 Recreation Action Plan Update

Table 6.3-1d. Selection and priority determination for the City of Pateros identified short-term recreation needs or actions.

Recommended improvements		FERC Project Boundary Reference— Inside, Outside or Splits the Boundary	8 Criteria Applied								2007 RAP Status	
			Needed to address existing observed impacts of project operations/facilities on the recreation resource or facility.	Needed to provide adequate public access to existing project lands & water.	Needed to support existing water-based activities.	Action is in conformance with the District's Land Use Policy.	Action is of key importance to local officials, governments, public agencies, or the District.	Action is in conformance with relevant and current agreements between the District and resource agencies.	Action is in conformance with the current FERC License Order approving all past RAP updates.	Action should more appropriately be considered during ongoing Project relicensing.	Priority	Accepted for future evaluation and consideration
	<b>Riverside Drive Recreation Access Site</b>											
37	Restroom maintenance painting/seal coating (inside and outside) (Maintenance issue)	Out		X	X	X	X	X	X		M	✓
38	Add/improve/maintain directional signs (for local public access amenities) (District could possibly provide laminated GIS maps).	Out		X	X	X	X	X			L	✓
39	Add restroom electricity	Out					X			X	L	
40	Restroom auto flushers installation for safety and energy efficiency (When an old flusher's replacement is needed, will use auto flushers)	Out				X	X	X			L	✓
41	Upgrade tennis lights for safety and energy efficiency	Out					X			X	L	
42	Resurface existing tennis courts as standard maintenance requirement; ongoing maintenance	Out					X			X	L	

Table 6.3-1d. Selection and priority determination for the City of Pateros identified short-term recreation needs or actions.

Recommended improvements		FERC Project Boundary Reference— Inside, Outside or Splits the Boundary	8 Criteria Applied								2007 RAP Status	
			<i>Needed to address existing observed impacts of project operations/facilities on the recreation resource or facility.</i>	<i>Needed to provide adequate public access to existing project lands &amp; water.</i>	<i>Needed to support existing water-based activities.</i>	<i>Action is in conformance with the District's Land Use Policy.</i>	<i>Action is of key importance to local officials, governments, public agencies, or the District.</i>	<i>Action is in conformance with relevant and current agreements between the District and resource agencies.</i>	<i>Action is in conformance with the current FERC License Order approving all past RAP updates.</i>	<i>Action should more appropriately be considered during ongoing Project relicensing.</i>	<i>Priority</i>	<i>Accepted for future evaluation and consideration</i>
43	Improve landscape including painting shed and backdrop (in 2002 RAP Update)	Split					X		X		L	✓
	<i>All Sites</i>											
44	Provide new water sources and conveyance for public shoreline park sites requiring water (to be addressed during relicensing)	Out					X			X	L	

Table 6.3-1e. Selection and priority determination for the Friends of Fort Okanogan identified short-term recreation needs or actions.

Recommended improvements		FERC Project Boundary Reference— Inside, Outside or Splits the Boundary	8 Criteria Applied								2007 RAP Status	
			<i>Needed to address existing observed impacts of project operations/facilities on the recreation resource or facility.</i>	<i>Needed to provide adequate public access to existing project lands &amp; water.</i>	<i>Needed to support existing water-based activities.</i>	<i>Action is in conformance with the District's Land Use Policy.</i>	<i>Action is of key importance to local officials, governments, public agencies, or the District.</i>	<i>Action is in conformance with relevant and current agreements between the District and resource agencies.</i>	<i>Action is in conformance with the current FERC License Order approving all past RAP updates.</i>	<i>Action should more appropriately be considered during ongoing Project relicensing.</i>	<i>Priority</i>	<i>Accepted for future evaluation and consideration</i>
1	Expand parking lot to accommodate buses, RVs and a greater number of regular vehicles at Fort Okanogan	Out					X			X	L	
2	Enlarge picnic area so as to serve as a presentation area for speakers and demonstrators at Fort Okanogan	Out					X			X	L	
3	Extend the current trail from the main building at Fort Okanogan to the shoreline	Out					X			X	L	
4	Increase I&E about plants and wildlife along the trail	Out					X			X	L	
5	Build a small playground at Fort Okanogan	Out					X			X	L	



**Table 6.3-1e. Selection and priority determination for the Friends of Fort Okanogan identified short-term recreation needs or actions.**

		FERC Project Boundary Reference— Inside, Outside or Splits the Boundary	8 Criteria Applied								2007 RAP Status	
			<i>Needed to address existing observed impacts of project operations/facilities on the recreation resource or facility.</i>	<i>Needed to provide adequate public access to existing project lands &amp; water.</i>	<i>Needed to support existing water-based activities.</i>	<i>Action is in conformance with the District's Land Use Policy.</i>	<i>Action is of key importance to local officials, governments, public agencies, or the District.</i>	<i>Action is in conformance with relevant and current agreements between the District and resource agencies.</i>	<i>Action is in conformance with the current FERC License Order approving all past RAP updates.</i>	<i>Action should more appropriately be considered during ongoing Project relicensing.</i>	<i>Priority</i>	<i>Accepted for future evaluation and consideration</i>
<b>Recommended improvements</b>												
6	Enhance displays at Fort Okanogan through construction of models of historical items, procurement of the model of Fort Okanogan and relocation of other relevant material from the Wells Dam	Out					X			X	L	
7	Provide technical and financial assistance for the production of promotional brochures, flyers and/or related products associated with the planned 2011 Fort Okanogan Bicentennial event	Out				X	X				M	✓
8	Assist with developing appropriate educational materials for all visitors to Fort Okanogan (Addressed in #7)	Out					X			X	L	

Table 6.3-1f. Selection and priority determination for the Port of Chelan County identified short-term recreation needs or actions.

		FERC Project Boundary Reference— Inside, Outside or Splits the Boundary	8 Criteria Applied								2007 RAP Status	
			Needed to address existing observed impacts of project operations/facilities on the recreation resource or facility.	Needed to provide adequate public access to existing project lands & water.	Needed to support existing water-based activities.	Action is in conformance with the District's Land Use Policy.	Action is of key importance to local officials, governments, public agencies, or the District.	Action is in conformance with relevant and current agreements between the District and resource agencies.	Action is in conformance with the current FERC License Order approving all past RAP updates.	Action should more appropriately be considered during ongoing Project relicensing.	Priority	Accepted for future evaluation and consideration
<b>Recommended improvements</b>												
1	Identify existing watercraft launch sites and categorize as primary, secondary or tertiary	In					X			X	M	✓
2	Identify and make watercraft launch site improvements where applicable	In					X			X	L	
3	Purchase and install directional signs for watercraft launch sites from the road and river	Split					X			X	L	
4	Purchase and install information and interpretive signs at primary watercraft launch sites	In					X			X	L	
5	Purchase and install carsonite information signs along rivers edge	In					X			X	L	
6	Identify appropriate stop-over sites for day-use along rivers edge	In					X			X	L	

**Table 6.3-1f. Selection and priority determination for the Port of Chelan County identified short-term recreation needs or actions.**

		FERC Project Boundary Reference— Inside, Outside or Splits the Boundary	8 Criteria Applied								2007 RAP Status	
			<i>Needed to address existing observed impacts of project operations/facilities on the recreation resource or facility.</i>	<i>Needed to provide adequate public access to existing project lands &amp; water.</i>	<i>Needed to support existing water-based activities.</i>	<i>Action is in conformance with the District's Land Use Policy.</i>	<i>Action is of key importance to local officials, governments, public agencies, or the District.</i>	<i>Action is in conformance with relevant and current agreements between the District and resource agencies.</i>	<i>Action is in conformance with the current FERC License Order approving all past RAP updates.</i>	<i>Action should more appropriately be considered during ongoing Project relicensing.</i>	<i>Priority</i>	<i>Accepted for future evaluation and consideration</i>
<b>Recommended improvements</b>												
7	Identify and make stop-over site improvements where applicable	In					X			X	L	
8	Purchase and install information/interpretive signs at stop-over sites where applicable	In					X			X	L	
9	Identify existing and potential appropriate camp sites along the rivers' edge	In					X			X	L	
10	Identify and make camp site improvements where applicable	In					X			X	L	
11	Purchase and install I & E signs at camp sites	In					X			X	L	
12	Coordinate with recreation activities to assist in map creation using GIS mapping to show access, amenities, stop-over sites, camp sites, etc	In					X			X	L	

2007 Recreation Action Plan Update

Table 6.3-1f. Selection and priority determination for the Port of Chelan County identified short-term recreation needs or actions.

		FERC Project Boundary Reference— Inside, Outside or Splits the Boundary	8 Criteria Applied								2007 RAP Status	
			<i>Needed to address existing observed impacts of project operations/facilities on the recreation resource or facility.</i>	<i>Needed to provide adequate public access to existing project lands &amp; water.</i>	<i>Needed to support existing water-based activities.</i>	<i>Action is in conformance with the District's Land Use Policy.</i>	<i>Action is of key importance to local officials, governments, public agencies, or the District.</i>	<i>Action is in conformance with relevant and current agreements between the District and resource agencies.</i>	<i>Action is in conformance with the current FERC License Order approving all past RAP updates.</i>	<i>Action should more appropriately be considered during ongoing Project relicensing.</i>	<i>Priority</i>	<i>Accepted for future evaluation and consideration</i>
<b>Recommended improvements</b>												
13	Coordinate with the relicensing effort on portage options (Currently being studied under relicensing)	In					X			X	L	

***THIS PAGE INTENTIONALLY LEFT BLANK.***

## 7.0 2007 RAP Update Actions and Cost Estimate Summary

Through the selection and priority setting process used for the short-term recreation needs and action recommendations from stakeholders, as presented in Section 6.3, the District has defined which actions will be included in the 2007 RAP Update. These actions focus on maintaining existing recreation facilities and improving recreational access to the reservoir, particularly for boaters in the Project area.

Table 7.0-1 summarizes the improvements planned for the upcoming 5-year period (2007-2012) as well as the preliminary cost estimates for each action. The actions are categorized by stakeholder group. Total costs for the 5-year period are estimated at \$4,264,000. Construction costs were estimated in 2007 dollars and were based on preliminary planning, not on design plans. The location of each action is identified as either being inside, outside, or splitting the existing FERC Project boundary.

**Table 7.0-1. 2007 RAP Update actions and cost estimates.**

<b>Requested by</b>	<b>Actions</b>	<b>Location in Relation to FERC Boundary</b>	<b>Estimated Construction Costs</b>
<b>Douglas County PUD</b>	Design, construct, and operate a new boat launch at Carpenter Island below Wells Dam	In (BL) - Out (Road)	\$1,800,000
	Paint the restrooms, perform maintenance, and enhance signage/kiosk at the Wells Dam Vista Overlook	In	\$25,000
	Complete and implement an annual program for conducting dock condition assessments and necessary repairs on District-owned docks and floats	In	Inspections & Maintenance - \$75,000 (\$15,000/year)
<b>City of Brewster</b>	Address the limited boat access available in the area by expanding the Columbia Cove boat launch	In	\$900,000
	Add additional parking for users of Columbia Cove Park	Out	Included in cost above
	Widen existing Columbia Cove boat launch to 2 lanes	In	Included in cost above
<b>City of Bridgeport</b>	Move the Marina Park boat launch ramp to the nearby USACOE boat launch and add a handling float on the inside <i>(Requires further approval by the USACOE)</i>	In	\$250,000
	Extend the jetty a short distance at the USACOE boat launch <i>(Requires further study and approval by the USACOE)</i>	In	Included in cost for above

**Table 7.0-1. 2007 RAP Update actions and cost estimates.**

<b>Requested by</b>	<b>Actions</b>	<b>Location in Relation to FERC Boundary</b>	<b>Estimated Construction Costs</b>
<b>City of Bridgeport</b> (continued)	Address the tree root damage problems in paving at the RV campsite area at Marina Park ( <i>Maintenance issue</i> )	Split	\$20,000
	Upgrade the existing lift station for sanitary dumping of RV sewage at Marina Park ( <i>Maintenance issue</i> )	In	\$20,000
	Decommission the old boat ramp	In	\$50,000
	Install 3 grey water sumps and install restroom auto flushers at Marina Park	Split	\$4,000
<b>City of Pateros</b>	Conduct annual dock inspections and maintenance at the Winter Boat Launch, Memorial Park, and Methow Boat Launch	In	See Douglas PUD action 3
	Add, improve and maintain water safety signs at the Winter Boat Launch and Methow Boat Launch ( <i>Okanogan County Sheriff's Office will provide signage at each boat launch and the District will install</i> )	In (Winter BL) – Out (Methow BL)	\$2,000
	Improve usability of the existing boat ramp at the Winter Boat Launch during all seasons (address ramp steepness, drop-off at the toe of the ramp, and ramp lane length)	In	\$900,000
	Conduct a feasibility study to modify the existing Winter Boat Launch and provide additional parking nearby (Figure 7.4-1c). If feasible, design and construct new facilities at this location.	In (BL) - Out (Parking)	Included in cost for above
	Conduct ongoing restroom maintenance (painting and seal coating inside and outside) at Memorial Park, Methow Boat Launch, Peninsula Park, and the Riverside Drive Recreation Access	Out	\$32,000
	Install restroom auto flushers for safety and energy efficiency at the Methow Boat Launch, Peninsula Park and the Riverside Drive Recreation Access Site ( <i>When an old flusher replacement is needed, will use auto flushers</i> )	Out	\$4,000
	Conduct ongoing gazebo and picnic shelter maintenance (painting and seal coating) at Memorial Park and Peninsula Park	Out	\$16,000
	Inspect asphalt pathways and maintain/repair cracks and tree root damage as needed at Memorial Park, Methow Boat Launch and Peninsula Park	Split	\$6,000

**2007 Recreation Action Plan Update**

**Table 7.0-1. 2007 RAP Update actions and cost estimates.**

<b>Requested by</b>	<b>Actions</b>	<b>Location in Relation to FERC Boundary</b>	<b>Estimated Construction Costs</b>
<b>City of Pateros</b> (continued)	Evaluate Americans with Disabilities Act (ADA) parking accessibility and define appropriate accessible parking spaces as feasible at Memorial Park; implement actions	Out	\$25,000
	Conduct a study of the swimming area at Peninsula Park including facility improvements (sandy beach, swim float, swimming area delineator, and access), visitor safety and watercraft traffic, and environmental quality (water quality and flushing, sedimentation, aquatic vegetation growth, and sensitive species); Implement the preferred alternative	In	\$100,000
	Reconstruct the playground fall protection area with pads using a concrete base and install a drain at Peninsula Park	Out	\$25,000
<b>Friends of Fort Okanogan</b>	Provide technical and financial assistance for the production of promotional brochures, flyers and/or related products associated with the planned 2011 Fort Okanogan Bicentennial event	Out	\$10,000
			Total \$4,264,000



## **7.1 Douglas County PUD Actions**

Three actions recommended by the District will be completed in the upcoming 5-year period, including:

- Design, construct, and operate a new boat launch at Carpenter Island below Wells Dam. This project is mostly located inside the FERC Project boundary. The access road to the boat launch site is mostly outside the FERC Boundary, as is the portion of the proposed dredged channel to access the boat launch from the reservoir surface;
- Paint the restrooms, perform maintenance, and enhance signage/kiosk at the Vista Dam Overlook. This project is located inside the FERC Project boundary; and
- Complete and implement an annual program for conducting dock condition assessments and necessary repairs on District owned docks and floats. This project is located inside the FERC Project boundary.

These actions are detailed in the following figures. Figure 7.1-1a shows an overview of the existing site conditions at the proposed location for the new Carpenter Island Boat Launch. Figure 7.1-1b is the preliminary concept design site plan for the new boat launch (prepared for the District in 2007).

Regarding the Wells Dam Vista Overlook, Figure 7.1-2a maps the existing conditions of the Wells Dam Vista Overlook and Figure 7.1-2b presents the maintenance actions at the Wells Dam Vista Overlook.





**Figure 7.1-1a. Proposed Carpenter Island boat launch existing conditions**

-  Facilities
-  FERC Boundary



Disclaimer: This information is not absolute in terms of its accuracy, regarding location, quantity, or quality. It should only be used as a source of generalized information and should not be considered a valid substitute for site-specific information where such information is required by federal, state, and local government laws and ordinances.

0 480 960 Feet



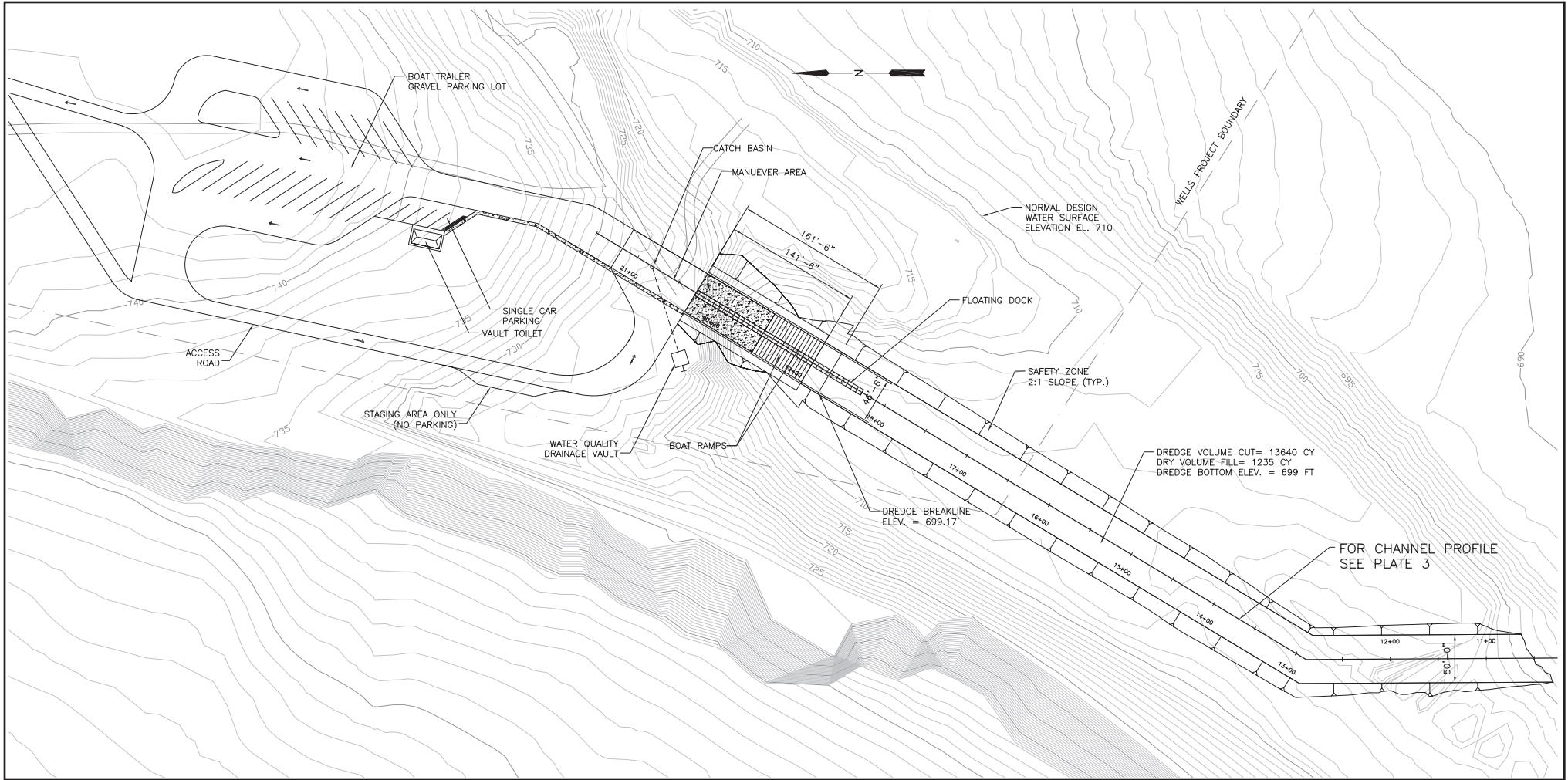
EDAW | AECOM

December 2007

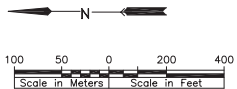
P:\2007\07100009\_01\GIS\Project\mxd\Carpenter Island.mxd



***THIS PAGE INTENTIONALLY LEFT BLANK.***



Source: Jacobs, 2007



Public Utility District No. 1 of Douglas County	
WELLS HYDROELECTRIC PROJECT	
WELLS DAM - COLUMBIA RIVER	
CARPENTER ISLAND BOAT LAUNCH	
CONCEPTUAL DESIGN	
SITE PLAN	
DESIGNED: CN/BIT	CRN
DRAWN: RWJ	DATE: 3/2007
JACOBS	
SCALE: AS SHOWN	PLATE 1

# **Wells Hydroelectric Project** **FERC Project No. 2149** **PUD No. 1 of Douglas County**

## **Figure 7.1-1b.** **Proposed Carpenter Island** **boat launch site plan**

2007 RAP Update



December 2007

*THIS PAGE INTENTIONALLY LEFT BLANK.*

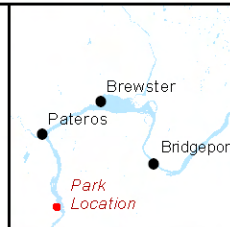




**Figure 7.1-2a. Wells Dam Vista Overlook existing conditions**

-  Facilities
-  FERC Boundary\*\*

\*\* Facilities shown in the map extent at within the FERC Boundary.



Disclaimer: This information is not absolute in terms of its accuracy, regarding location, quantity, or quality. It should only be used as a source of generalized information and should not be considered a valid substitute for site-specific information where such information is required by federal, state, and local government laws and ordinances.

0 40 80 Feet

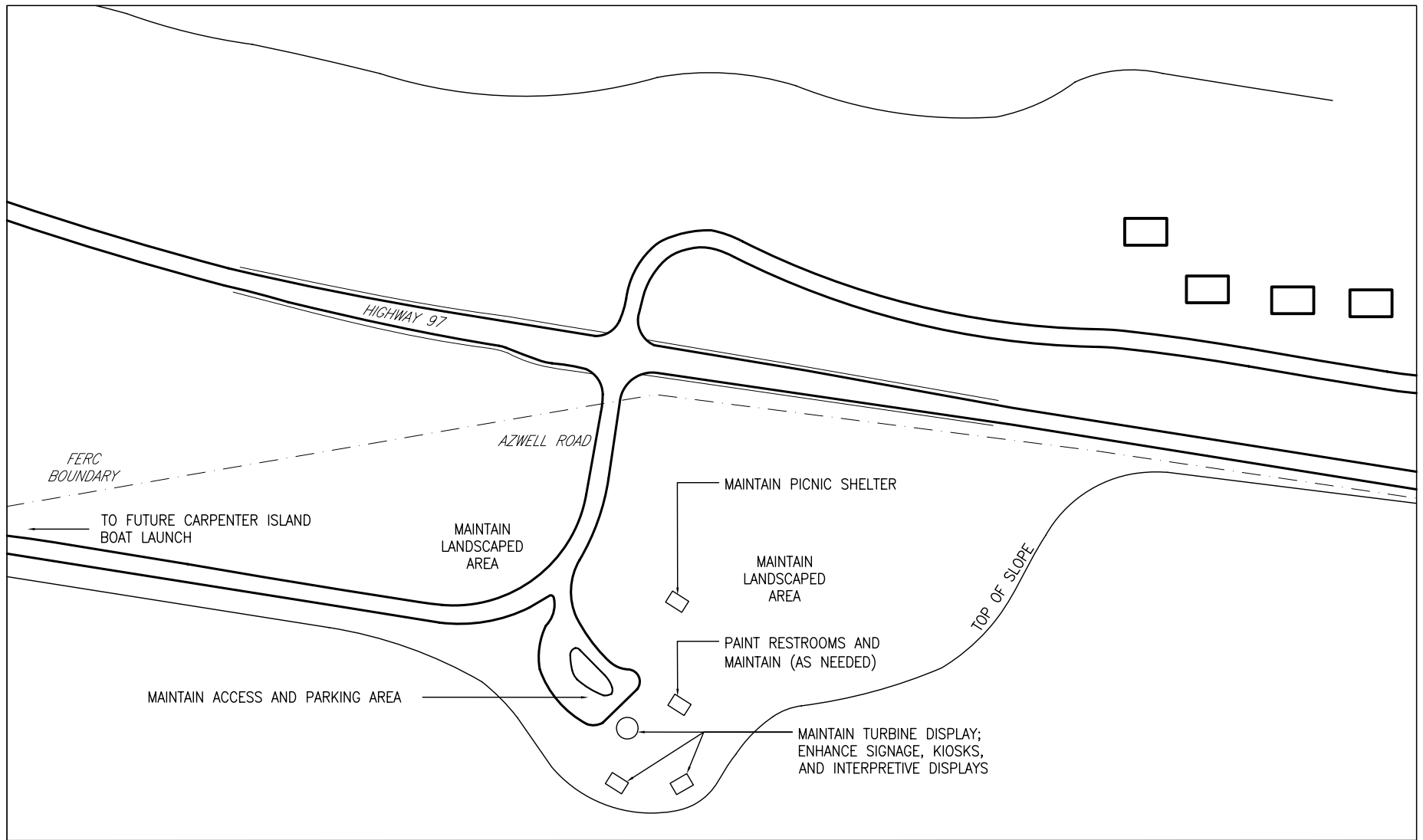


EDAW | AECOM

December 2007

P:\2007\07100009\_01\GIS\Project\mxd\Wells\_Dam\_Overlook.mxd

*THIS PAGE INTENTIONALLY LEFT BLANK.*



SOURCE: EDAW Inc., 2007

**Wells Hydroelectric Project**  
**FERC Project No. 2149**  
**PUD No. 1 of Douglas County**

Figure 7.1-2b.  
Wells Dam Vista Overlook  
maintenance site plan



North



2007 RAP UPDATE

DECEMBER 2007



***THIS PAGE INTENTIONALLY LEFT BLANK.***