
Recreation ACTION PLAN



2002 Update

Supplement to the 1982
Public Use Plan

Wells Hydroelectric Project
Public Utility District No. 1 of Douglas County, Washington

FERC Project No. 2149

**Public Utility District No. 1 of Douglas County
Wells Hydroelectric Project
Recreation Action Plan
2002 Update
Supplement to the 1982 Public Use Plan**

**Public Utility District No. 1 of Douglas County
East Wenatchee, Washington**

**PUBLIC UTILITY DISTRICT NO. 1 OF DOUGLAS COUNTY
WELLS HYDROELECTRIC PROJECT
RECREATION ACTION PLAN 2002 UPDATE
TABLE OF CONTENTS**

Section No.	Page
1 Introduction	1
1.1 Purpose of the 2002 Plan Update	1
1.2 Wells Project Recreation Planning History	1
1.3 Approach to the 2002 Update	2
2 Project Location and Regional Setting	3
2.1 The Columbia River and Surrounding Area(s)	3
2.2 Wells Hydroelectric Project	4
3 Existing Recreation Resources	7
3.1 Project Recreation Resources and Facilities	7
3.2 Existing Recreational Use	15
4 Determination of Recreational Need	16
4.1 Statewide Comprehensive Outdoor Recreation Plan	16
4.2 Agency Consultation	19
4.3 Public Comment	22
4.4 Current Use Data	32
5 District Response to Recreational Need	34
6 Action Plan 2003-2007	37
Implementation/Construction Schedule	42
7 References	43

APPENDICES

**APPENDIX A LETTER OF INVITATION TO AGENCY MEETINGS AND
DISTRIBUTION LIST**

APPENDIX B AGENCY MEETING SUMMARIES AND NOTES

**APPENDIX C DOUGLAS COUNTY PUD, STATE OF WASHINGTON AND
WASHINGTON STATE PARKS INTERLOCAL AGREEMENT—CHIEF
JOSEPH STATE PARK**

APPENDIX D PUD No.1 DOUGLAS COUNTY LAND USE POLICY

**APPENDIX E PUD No.1 DOUGLAS COUNTY PARK SURVEY DATA
FROM FERC FORM 80**

APPENDIX F LETTERS/COMMENTS FROM AGENCIES AND STAKEHOLDERS

**APPENDIX G IAC SCORP GRAPHS AND TABLES AND ESTIMATE OF FUTURE
PARTICIPATION IN OUTDOOR RECREATION IN WASHINGTON
STATE**

Section 1

Introduction

The Public Utility District No. 1 of Douglas County (District) owns and operates the Wells Hydroelectric Project on the Columbia River in central Washington (Figure 1). The Wells Hydroelectric Project is operated as Federal Energy Regulatory Commission (FERC) Project Number 2149, with an installed capacity of 774 MW. The original 50-year FERC license for the Wells Hydroelectric Project was issued in 1962 with an expiration date in 2012.

The original license for the Wells Project included a requirement to prepare a Public Use Plan for the project. In 1982, in conjunction with the District's FERC license amendment for a 2-foot pool raise, this original plan was revised to reflect changes in the demand for recreation opportunities. As a part of this 1982 plan, the District agreed to update the plan every five years. This 2002 plan is the fourth of these Recreation Action Plan Updates.

The District is required under its current FERC license to consult with the National Park Service (NPS), the Washington State Parks and Recreation Commission (State Parks), and other interested Federal, State, and local community agencies (all Stakeholders) in the preparation of these updates. For this 2002 Update, the District has consulted with NPS; State Parks; the Colville Tribe; Washington Department of Fish and Wildlife (WDFW); Washington State Department of Transportation and a number of other Washington State agencies; and officials and interested members from the communities of Brewster, Bridgeport, and Pateros to ensure a complete understanding of the local and regional recreation setting and needs. The District held an initial kickoff meeting at 9:00 AM on Tuesday, April 16, 2002 to learn of recreation needs from various identified stakeholders and Agencies associated with the Wells Project Reservoir. See the invited agencies and communities in the Appendix.

1.1 Purpose of the 2002 Plan Update

The purpose of this 2002 plan update is to determine recreation needs at the Wells Hydroelectric Project, and to respond to those needs with a Recreation Action Plan Update for the coming five-year period (2002-2007).

1.2 Wells Project Recreation Planning History

In 1967, the District prepared a public use plan (*1967 Public Use Plan*) as a condition of the original FERC license. The original plan was revised in 1982 when the FERC license was amended to raise the elevation of the reservoir two feet. National Park Service suggested and the Federal Regulatory Commission (FERC) agreed that this Plan should be updated every five years to reflect the changes in recreation supply and demand in the Wells Project area.

In 1987, a Recreation Action Plan was developed as a supplement to the 1982 Public Use Plan, and a second five-year update, *Recreation Action Plan 1992 Update - a Supplement to the 1987*

Public Use Plan, was prepared in 1992. An additional third update was prepared in 1997. This 2002 Update is the fourth update to be developed and it covers the period from 2002 through 2007.

1.3 Approach to the 2002 Update

Numerous text portions of previous Updated Plans are used in Sections 1, 2, 3 and 4 of this 2002 Updated Plan. Recreation supply, demand and need data has been verified and is current, current request(s) for projects are mostly from the stakeholders and the proposed Plan is based on those requests as they meet the criteria set forth by the District. This five-year update is a stand-alone document concentrating on changes to recreation supply, demand, and needs since the last five-year update was conducted in 1997. Although some of the text is from previous plans, the current proposed Plan is formulated to meet the specific current Water Based Recreational Needs. The 2002 Update was specifically designed to:

- review recreation trends at the local, regional, and state level to determine Water Based Recreational need by comparing the available supply of recreational facilities to existing and projected demand for those types of facilities as they relate to the Wells Project;
- balance identified need for additional or improved Water Based Recreational facilities with the need to protect or enhance other resources; and
- outline proposed actions to be undertaken by the District over the next five years to address Water Based Recreation needs related to the Wells Project.

Water Based Recreational needs were determined based on a review of available local, regional, and state data; input from tribal, state, local resource managers and community officials, and members of the public; an assessment of existing supply at the local and regional level; and an inventory of the existing recreation facilities at the Wells Project. Details on the collection, review, and interpretation of this information are included in Section 4.

Recreational needs were balanced with other resource needs based on the District's Land Use Policy and information received from WDFW. Discussion of this information is included in Section 5. Section 6 contains the specific site and facility improvements that are proposed for the five-year period 2002-2007.

WASHINGTON STATE PLAN - PROJECT LOCATION

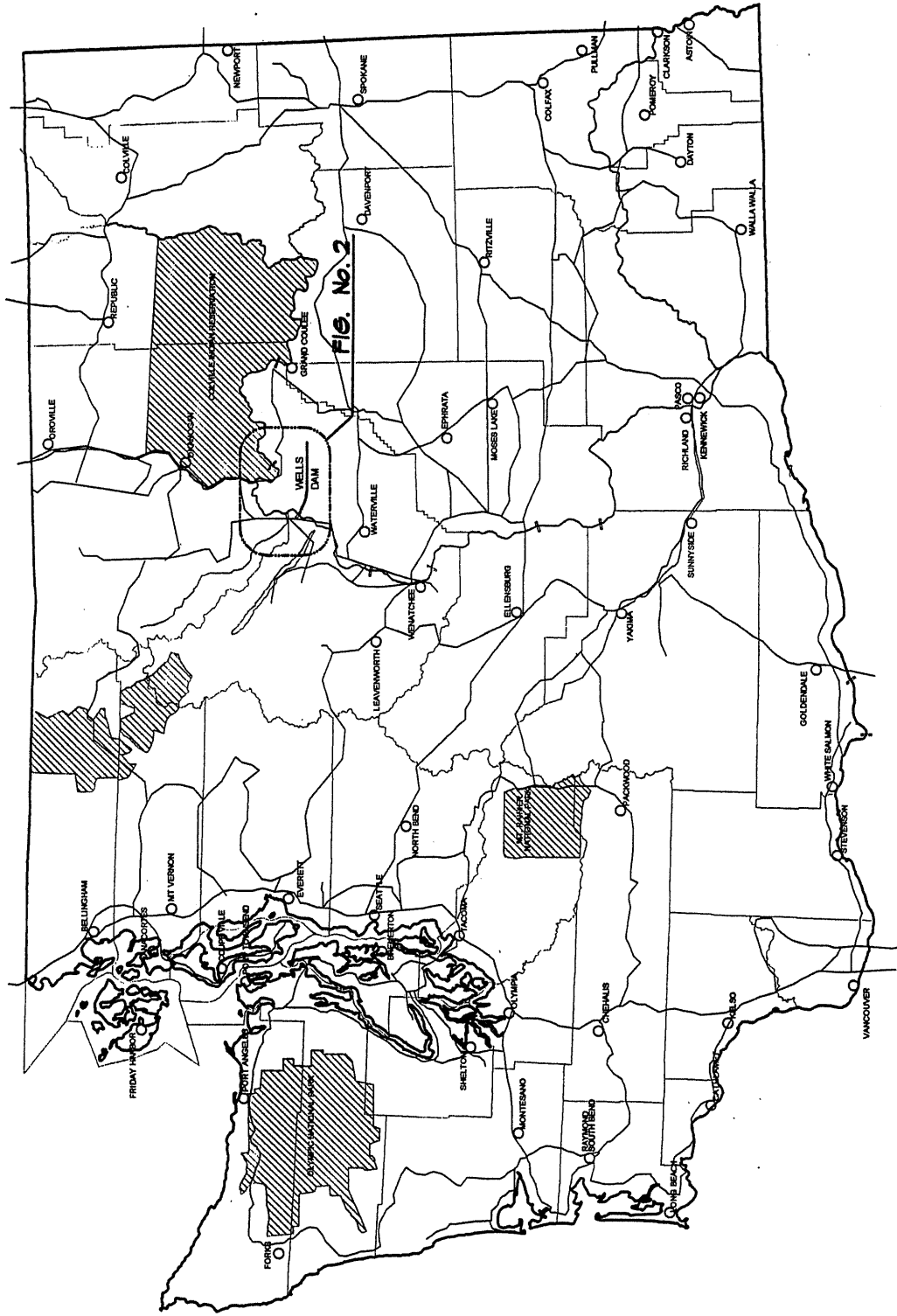


Fig. No. 2

FIGURE No. 1
SCALE: N.T.S.

Section 2

Project Location and Regional Setting

The State of Washington encompasses a wide range of geographic diversity, from the marine influenced ocean shores and Puget Sound, over the rugged Cascade Range to the rolling hills of central Washington, to the ancient mountain ranges of north central and eastern Washington. The Wells Hydroelectric Project is located on the Columbia River in the rolling hills and basalt plateaus and valleys of north central Washington (Figure 1).

The climate in the project vicinity is dry and semi-arid, averaging only approximately 10 inches of precipitation a year, with average high temperatures of 100 degrees +/- (Fahrenheit) and lows of 0 degrees +/- . In the immediate project vicinity, shrub-steppe vegetation habitats are predominate (sage/bitter brush), with cottonwoods and willows typically occurring in riparian areas. In the broader region surrounding the project, higher elevations and increased amounts of precipitation support softwood forest habitats.

The economy of the region encompassing Douglas, Okanogan, Chelan, and Grant counties is based primarily on agriculture. Apples, cherries, other fruits, potatoes, wheat, and hay are important regional crops. The North Central Washington region's economy is also supported by timber, mining, and tourism. Wenatchee's medical facilities serve clients from the central basin area to the Canadian border to the north. Douglas County Port District and Chelan County Port District along with a private industrial area to the north of East Wenatchee provide facilities for light industry and services supporting the agricultural base of the region.

This central Washington region is sparsely populated. According to the 2000 Census, the population of Douglas County was 32,603 people, Okanogan County was 39,564 people, Chelan County was 66,616 people, and Grant County was 74,690 people. The 2000 population of the entire state of Washington was 5.89 million people.

2.1 The Columbia River and Surrounding Area(s)

The Columbia River begins in icefields of the Arrow Lakes region of British Columbia and enters Washington in the northeast corner of the state, flowing south and west 145 miles through Lake Roosevelt to Grand Coulee Dam. The river continues west through Chief Joseph Dam into the Wells Reservoir where it again turns south and runs through a series of dams, eventually flowing west to the Pacific Ocean (Figure 1). There are 11 dams on the main stem of the Columbia River in the United States. The Wells Dam lies between the U.S. Army Corps of Engineers' Chief Joseph Dam (upstream) and Chelan County Public Utility District's Rocky Reach Dam (downstream).

Chief Joseph Dam lies upstream from the Wells Project, about a mile above the city of Bridgeport. The reservoir (Rufus Woods Lake) behind Chief Joseph Dam is approximately 50 miles long, and shorelines are typically steep throughout its length. Development along Rufus Woods Lake is limited due to steep shorelines and the lack of population centers. State Parks has a developed park on the east side of the reservoir above Chief Joseph Dam.

Rocky Reach Dam and Rock Island Dam are located downstream of the Wells Project (approximately 40 miles and 60 miles, respectively). The vicinity of these reservoirs is characterized by highway access, private ownership, industrial development, agricultural activity, and highly used public park development. The cities of Wenatchee and East Wenatchee, with a combined population of approximately 50,000, are located along this portion of the river. Highway 2 and/or 97 (& 97 A) closely parallel the entirety of this river region. Industrial development includes an Alcoa Aluminum Plant and numerous agricultural packing plants and agricultural based services centers. Recreation facilities along both sides of this river region are of local, regional, and statewide significance, providing water access, camping and picnicing facilities, athletic fields, and a network of walking, jogging and bicycle riding trails. Recreation providers in this region include State Parks, the Port of Douglas County, and the Chelan County Public Utility District. Lake Chelan located a short distance to the west of the Columbia River just below Wells Dam also has similar recreation facilities managed by National Parks Service, State Parks, and Chelan County Public Utility District and a number of private resorts.

2.2 Wells Hydroelectric Project

The Wells Dam is located at river mile 516 on the Columbia River (Figure 1). A feature of the project is the unique hydrocombine design, with power units, spillways, fish passage facilities and switchyard in a single structure.

The Wells Reservoir (also known as Lake Pateros) is approximately thirty miles long, and extends approximately 3 miles up the Methow River and 17 miles up the Okanogan River. Surface acreage at full pool is approximately 9,740 +/- acres. Most of the shoreline is steep, with slopes rising to benches twenty to forty feet above the reservoir. Exceptions to this are at the mouth of the Okanogan River, Washburn Island, Columbia Cove in Brewster, Bridgeport Bar, Marina Park in Bridgeport and the shoreline at Pateros, where the shoreline varies from a few feet to approximately ten feet above the reservoir (Figure 2). Methow River and Okanogan River shorelines are much more accessible.

The reservoir forms the boundary between Douglas County on the south and east and Okanogan and Chelan counties on the north and west (Figure 1). The reservoir also forms the southern boundary of the Colville Indian Reservation, which lies east of the Okanogan River (Figure 1).

The reservoir shoreline is generally owned in fee title by the District. Adjacent land uses are characterized by private ownership and agricultural activity. The river is physically accessible along much of this reach, being closely paralleled on the west by Highway 97 for twenty miles. A good portion of the east/south shoreline is unaccessible except by boat or through privately owned fields from the canyons above that stretch to the river below. The cities of Pateros, Brewster, and Bridgeport, with 2000 census populations of approximately 643; 2,189; and 2,059 respectively, lie along the river (Figure 2). Recreation facilities along this reach of the river provide access to the water for boating, water skiing, fishing and swimming, as well as many amenities typically found in small city parks such as picnic shelters, restrooms, playgrounds and tennis courts. Water fowl, upland game birds and deer hunting are also found adjacent to the

reservoir. Recreation providers in this region include the District, WDFW, State Parks, and the cities of Pateros, Brewster, and Bridgeport.

The primary access route to the area from Seattle is Interstate 90 over Snoqualmie Pass to Highway 97 and north through Wenatchee on 97 or 97A. Other major routes include U.S. Highway 2 over Stevens Pass and seasonal summer access on State Highway 20 over the North Cascades. Tourists may also access the region via State Highway 2 from Spokane to the east. Canadian tourists access the region by State Route 97 from the north intersecting the reservoir just north of the city of Brewster. Grand Coulee Dam, a major international tourist attraction, is located to the east at the end of the Rufus Woods reservoir, within an easy 1 hour drive from the Wells Project.

The Wells Project vicinity in the summertime is hot and dry compared to Washington's major population centers in the Seattle area. The Wells Reservoir, along with the other reservoirs and lakes in the central Washington region, are popular for a variety of recreation activities including swimming, boating, fishing, hiking and animal/bird watching, etc. The fall season brings hunters to the reservoir for ducks, geese, and deer in the adjacent fields and dry grass area canyons leading from the reservoir to the wheat fields above the river.

Much of the east side of the reservoir in Douglas County is only accessed by boat or through privately owned fields from above the river canyon walls. Major access points to the reservoir are at the (3) communities and a number of boat launches (including lightly developed sites) along the water's edge on the west side of the river.

PROJECT LOCATION - VICINITY MAP

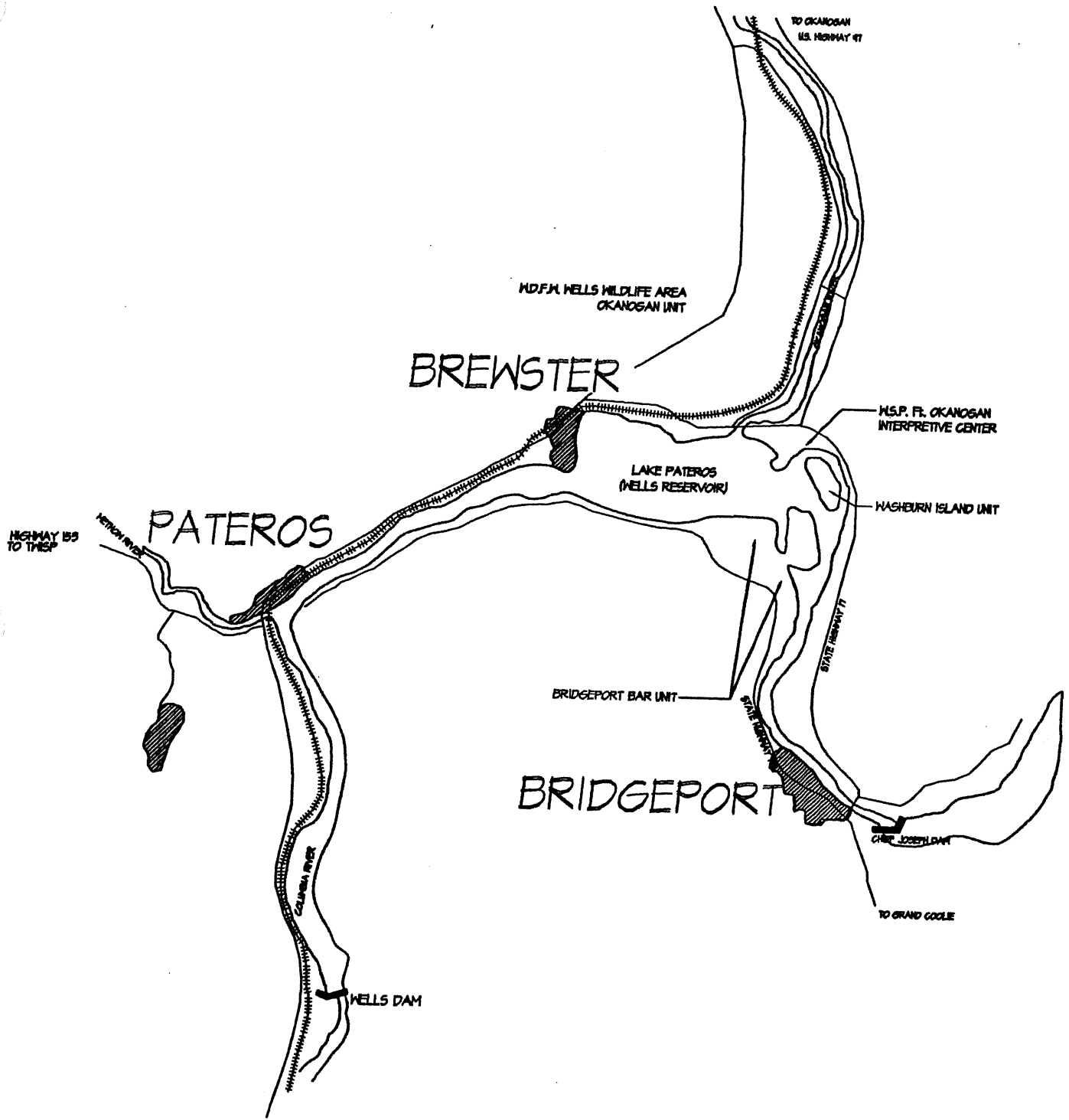


FIGURE No. 2

SCALE : N.T.S.

© 1977/2002 L&L/11 FTY, The DUFF/Associates, FS

Section 3

Existing Recreation Resources

Washington State is renowned for its lakes, streams, rivers, and forests which provide a host of recreation opportunities and play a significant role in providing habitat for fish and wildlife.

The Wells Project is located in central Washington, in a region identified by state planners as a recreation destination area for local residents and visitors from western Washington. This 10-county central Washington region provides parking for approximately 14,000 vehicles at over 340 boat launching facilities; over 4 miles of developed swimming beaches on dozens of lakes, rivers, and streams; and over 16,000 camping units (IAC 1990). Large lakes and reservoirs near the Wells Project include Lake Chelan, Chief Joseph Reservoir (Rufus Woods Lake), Rocky Reach Reservoir (Lake Entiat), Lake Roosevelt behind Grand Coulee Dam, Banks Lake and the Rock Island Reservoir in Wentachee (Confluence State Park at the confluence of the Wenatchee and Columbia Rivers). All of these major water recreation destinations lie within 50 miles of the Wells Project. Both Lake Roosevelt and the upper portion of Lake Chelan are National Recreation Areas administered by the National Parks Service. User fees are now being charged for use of these NPS parks.

This vast array of recreation opportunities and facilities are made available to the public by a combination of public agencies, private companies, and non-profit organizations. Provision of park and recreation resources is the prime concern of the National Parks Service, State Parks, and county and city park departments. With other agencies, such as the U.S. Forest Service, the U.S. Army Corps of Engineers, the Washington Department of Natural Resources, Washington Department of Fish and Wildlife, Public Utility District(s), Port District(s), and School District(s), the provision of recreation opportunities is one of several agency concerns.

3.1 Project Recreation Resources and Facilities

Public access to project lands and waters is widely available. Recreation facilities located within or immediately adjacent to the Wells Reservoir include:

- 10 boat launches (including cartop boat facilities)
- 3 swimming beaches (Peninsula-Pateros, Columbia Cove-Brewster and Marina -Bridgeport)
- 5 parks (Peninsula and Memorial, Columbia Cove and Riverfront Trail, Marina Park)
- 3 campgrounds with 44 total sites (Private -Pateros, Columbia Cove and Marina)
- 4 undeveloped or lightly developed access points
- 5 picnic areas (Peninsula, Boat Launch and Memorial, Columbia Cove and Marina)
- 2 visitors centers (Wells Dam and Fort Okanogan Interpretive Center)
- 3 interpretive displays (Wells Overlook, Wells Dam and Fort Okanogan Interpretive Center)
- 2 overlooks (Wells Dam Overlook and Fort Okanogan Interpretive Center)
- 3 playground areas for smaller children with fall protection (Peninsula, Columbia Cove and Marina Parks)
- 2 walking/hiking trails (Memorial park in Pateros and Riverfront Trail in Brewster)
- Thousands of acres of wildlife/hunting areas on both sides of the reservoir in Chelan, Okanogan and Douglas counties

In keeping with the spirit and responsibilities of their license, the District has been a major contributor to recreation facility and opportunity development at the Wells Project and in the general region throughout the term of the current FERC license. Table 1 identifies the major recreation mitigation and enhancement measures the District has undertaken since the construction of the Wells Dam.

TABLE 1
HISTORICAL OVERVIEW
of RECREATION DEVELOPMENTS and IMPROVEMENTS
WELLS HYDROELECTRIC PROJECT
PUBLIC UTILITY DISTRICT NO. 1 of DOUGLAS COUNTY

1962-1981	1982-1986	1987-1991	1992-1996
Prepared <i>1967 Public Use Plan</i>	Prepared <i>Public Use Plan 1982</i>	Prepared <i>Recreation Action Plan - Supplement to the 1982 Public Use Plan (1987)</i>	Prepared <i>Recreation Action Plan 1992 Update - Supplement to the 1982 Public Use Plan</i>
Construction of Visitors Center and Overlook at Wells Dam	Initiated funding for Chief Joseph State Park	Improvements to Starr Boat Launch	Improvements to Wells Dam Overlook
Developed Memorial Park, Peninsula Park, and boat launch in Pateros		Improvements to Memorial Park, Peninsula Park, the Methow River boat launch and tennis courts in Pateros	Improvements to Memorial Park and Pateros tennis courts, including developing a paved path from Memorial Park to the Methow Boat Launch
Developed Columbia Cove Park in Brewster		Construction of winter boat launch in Pateros	Improvements to Columbia Cove Park
Deeded Chief Joseph State Park lands to Washington State Parks		Construction of Highway 153 Access Area	Enhancements to Brewster Waterfront Trail
Constructed a causeway to the Chief Joseph State Park island		Improvements to Columbia Cove Park	Improvements to Marina Park
Deeded 5,758 acres of land to Washington Department of Game for use as Wildlife Recreation Areas (additional District lands are leased to WDFW and/or dedicated to WDFW projects)		Improvements to Marina Park	Improvements to Monse Road Boat Launch
Deeded Methow River fishing access parcels and easements to Washington Department of Game		Continued funding of Chief Joseph State Park	Developed Chicken Creek Boat Launch
Developed Marina Park in Bridgeport			Continued funding of Chief Joseph State Park

TABLE 1 (continued)
HISTORICAL OVERVIEW
of RECREATION DEVELOPMENTS and IMPROVEMENTS
WELLS HYDROELECTRIC PROJECT
PUBLIC UTILITY DISTRICT NO. 1 of DOUGLAS COUNTY

1997-2001
<i>Prepared Recreation Action Plan 1997 Update - Supplement to the 1982 Public Use Plan</i>
Improvements to Peninsula Park including picnic shelter, play structure and fall protection, asphaltic walkways, benches and picnic table and lawn/grass restoration of disturbed areas
Improvements to Memorial Park including seal and painting of the existing bathrooms
Improvements to Columbia Cove Park including installation of ADA walkways to picnic shelters and kitchen, picnic tables and benches, seeding/sodding of disturbed areas
Enhancements to Brewster Waterfront Trail including selective thinning and pruning of selected trees and undergrowth, erosion protection and new dock/pier are out for permitting
Improvements to Marina Park including permitting for concrete curbing, asphaltic walks, swimming beach sand, sod/seeding of disturbed areas, erosion protection out for permitting
Improvements to Methow River Fishing Access site including pedestrian pathways, accessible vault toilets, parking and pedestrian use areas delineation with boulders, timber stair construction
Continued funding of Chief Joseph State Park

Figure 3 identifies the location of the recreation facilities and access areas within and adjacent to the Wells Project. A brief discussion of each facility follows.

Wells Dam Overlook and Visitors Center

Recreation facilities at Wells Dam include a visitors center at the dam where interpretive displays and prearranged guided tours are available which acquaint visitors with the design and operation of the power generating facilities, the life cycle of salmon, the geology of the Columbia River and other interesting historical and scientific facts. A fish viewing window allows close inspection of adult salmon migrating upstream, steelhead and local fisheries.

The District has constructed renovations to the Overlook at Wells Dam. The Overlook currently has a picnic shelter, ADA accessible restrooms, vehicle and RV parking and interpretive displays (including a turbine runner and blades removed from the powerhouse in the early 1990s). Large rock formations containing Native American drawings are also on display.

Starr Boat Launch

The District constructed and maintains a boat launch at Starr, approximately two miles upstream from Wells Dam. Facilities at the Starr boat launch include a concrete launching ramp and a vault toilet. An unpaved parking lot is provided.

Highway 153 Access Area

A fishing access area and car top boat launch are located on the Methow River at its confluence with the Columbia River. Facilities at this site include vault toilets and parking for dozens of vehicles. Areas of the site are delineated by large boulders for protection of pedestrians and vehicle control. This site is also used extensively by Methow River rafters as a take-out site during spring and early summer. Portions of the site adjacent to the highway are irrigated by neighbors to the south across the highway.

Peninsula Park

Peninsula Park is located on the Methow River at its confluence with the Columbia River in Pateros. Park facilities include a swimming beach, gazebo, picnic tables, playground with fall protection, asphaltic pathways, open grass/lawn area(s) and restrooms.

Memorial Park

Memorial Park is located on the Columbia River in Pateros. Park facilities include a hydroplane launch site, ski docks, moorage docks, picnic shelters, kitchen/picnic shelter, interpretive displays, and restrooms. The park has an asphaltic paved trail near the river's edge extending from the bridge under-crossing (from boat launch area) to City Hall.

EXISTING RECREATION RESOURCES

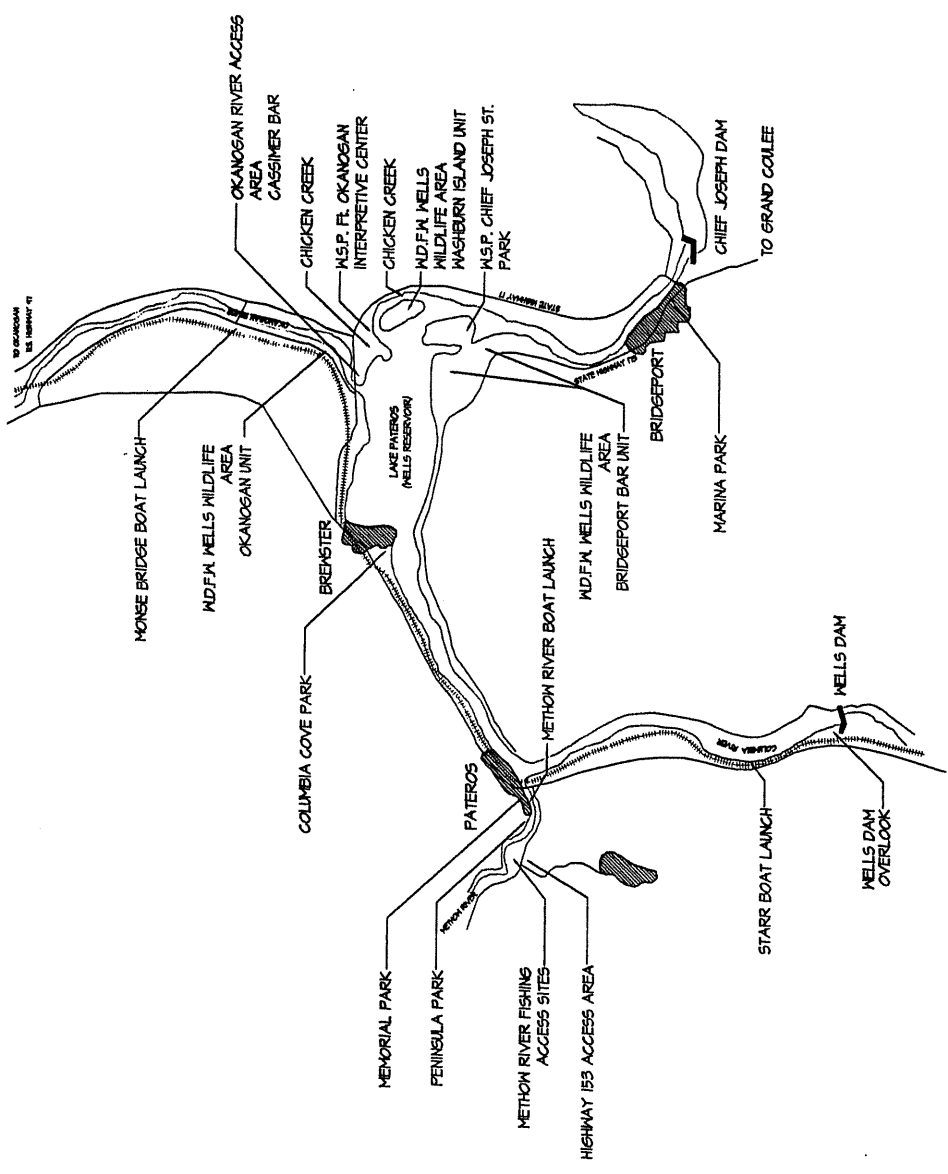


FIGURE No. 3
SCALE : N.T.S.

Additional Facilities in Pateros

In addition to Peninsula and Memorial Parks, the City of Pateros also maintains two boat launches and a tennis court. One boat launch is located at the mouth of the Methow River. Facilities at this launch include a concrete launching ramp, dock, fish cleaning station, and restrooms. Lawn encompasses the parking lot to the east and north. This boat launch area is tied-in to Memorial Park via an accessible walkway underneath the Highway 97 and railroad bridges. A second boat launch (located upstream from Memorial Park) was designed to facilitate winter launching when use of the main launch becomes difficult due to ice build-up. The municipal tennis courts are located along the Methow River a few blocks west from Peninsula Park. A privately owned, 5-site RV park is located immediately adjacent to Memorial Park. This is scheduled for possible demolition and replacement by a motel complex in the very near future. Currently the City allows RVs to parallel park along Memorial Park overnight for a small fee.

Columbia Cove Park

Columbia Cove Park is located in Brewster. Facilities at the Park include a boat launch, moorage docks, swimming beach, picnic shelters, playground with fall protection, basketball court, and restrooms. The park is adjacent to a city-run swimming pool facility and a 21-site RV campground. The District installed ADA accessible sidewalks to the playground equipment and various picnic shelters during the spring of 2002. The District is currently providing repairs to the existing picnic shelter walls and painting the restroom building and the picnic shelters.

Brewster Waterfront Trail

The City of Brewster developed an accessible shoreline trail, with the assistance of the Department of Natural Resources and the District. The trail is located north of Columbia Cove Park and is approximately ½ mile long. The trail is generally 6 to 8 feet above the water level, and twenty feet or more below adjacent streets and residential yards. It is connected to city streets at either end by ramps and at three intermediate locations by stairs. The District resurfaced the trail with compacted stone in 1996. The District removed and trimmed trees and underbrush along the Waterfront trail during the spring of 2002.

Monse Bridge Boat Launch

The District constructed and maintains a boat launch at the Monse Bridge on the Okanogan River. Facilities at the boat launch include a concrete launching ramp and a vault toilet. Unpaved vehicle parking is provided at this site.

Cassimer Bar Access Area

The District constructed and maintains a fishing access site on Cassimer Bar near the Highway 97 bridge at the mouth of the Okanogan River. Facilities at the site include shoreline access and a vault toilet. Unpaved access and a parking area are provided.

Fort Okanogan Interpretive Center

The Fort Okanogan Interpretive Center is a unit of the Washington State Parks. It is located on the north side of the Columbia River near the mouth of the Okanogan River on a high plateau overlooking the reservoir. Dioramas, displays of artifacts, and pamphlets explain the history, culture and geology of the area. The interpretive center is presently being operated by the Colville Confederated Tribes through an agreement with State Parks.

Chicken Creek Boat Launch

The District maintains a boat launch at Washburn Island where Chicken Creek flows into the Washburn Island Slough. Facilities at Chicken Creek include a concrete launching ramp and a vault toilet. Unpaved access and parking is provided. The boat launch provides access to the Washburn Island Slough, but not the reservoir.

Chief Joseph State Park

Washington State Parks owns 297 acres on an island connected by a causeway to Bridgeport Bar. State Parks has developed a Master Plan for the development of 240 individual camping units, one group camping area, a swimming beach, boat launching and docking facilities, and support facilities (ranger residence, garage, etc.) on the island. Current development includes only unmaintained roads, water and electricity for irrigation, and windbreak plantings. The Park area is gated to prevent motorized vehicle access, but remains open for walking, horseback riding, and bicycling. The 1997 Recreation Action Plan addressed the feasibility of this site for additional development. Negotiations are currently underway between State Parks and the District for the District's purchase of this property.

Marina Park

Marina Park is located in Bridgeport. Facilities at the park include two boat launches, moorage docks, swimming beach, fishing dock, fish cleaning station, 18-site RV and tent campground, picnic shelter(s)/gazebo, playground, and restrooms. Overflow RVs use the vehicle parking lots. The swimming area on the east side of the swimming lagoon is connected to the rest of the park with asphaltic pathways.

Wildlife/Hunting Areas

The District, in cooperation with WDFW, has provided recreation opportunities on over 5,000 acres of land in the Wells Wildlife Management Areas. The approximately 800 acres of wildlife lands along the immediate reservoir shoreline are located in the Bridgeport Bar, Washburn Island, and Okanogan units. These areas serve a dual purpose of providing improved conditions for wildlife and low-impact or natural resource-based recreation opportunities.

Methow River Fishing Access Sites

The WDFW owns fee title or easements for 20,000 feet of shoreline along the Methow River. The District deeded these lands and easements to WDFW as a part of the mitigation for the impacts of project construction. These lands are outside the FERC project boundary, dispersed along the Methow River from Pateros to Carlton (Figure 4). These sites are generally unimproved shoreline access sites.

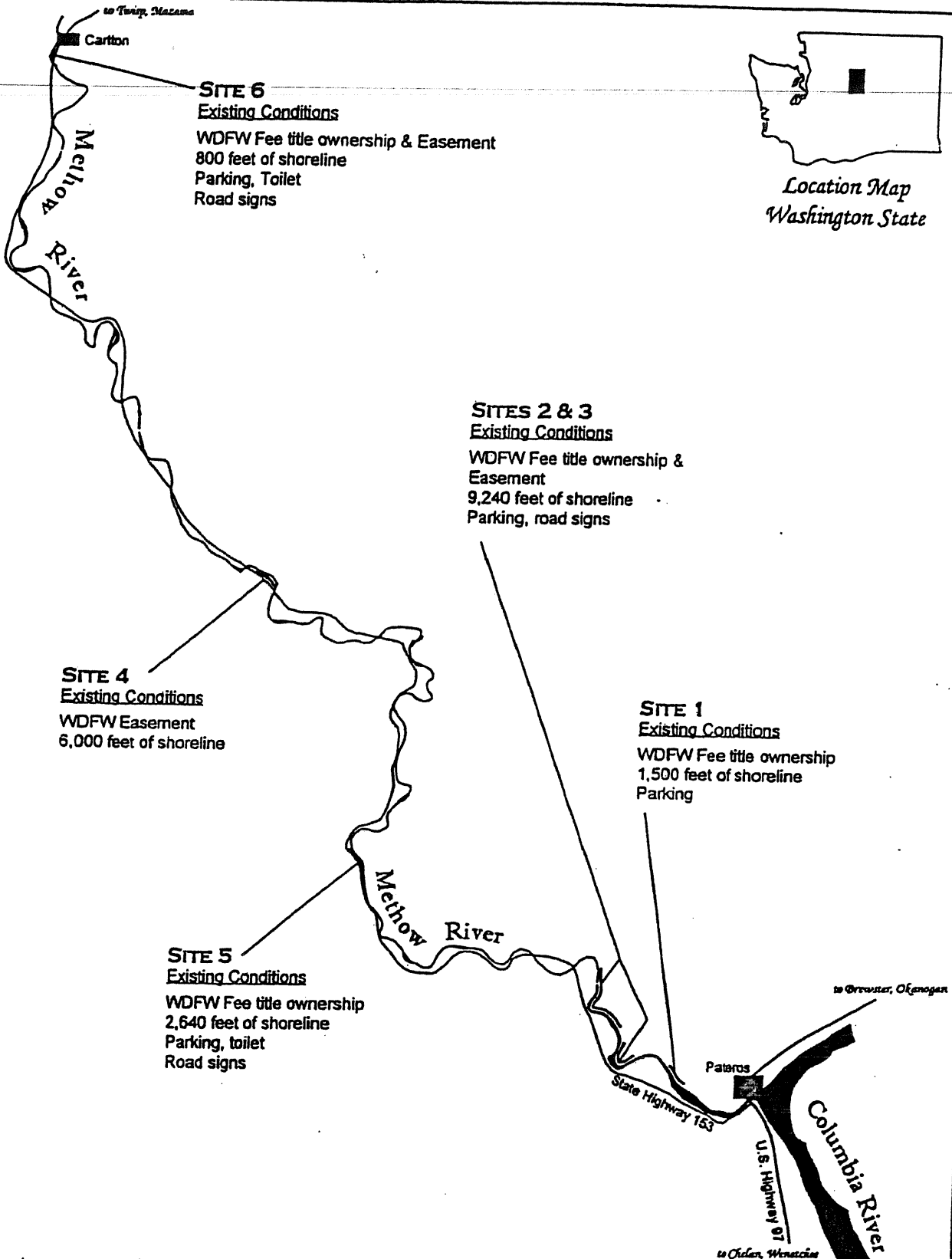


FIGURE 4

**WASHINGTON DEPARTMENT OF FISH AND WILDLIFE
METHOW RIVER FISHING ACCESS SITES
PUBLIC UTILITY DISTRICT No. 1 OF DOUGLAS COUNTY
2002 RECREATION ACTION PLAN UPDATE**

3.2 Existing Recreational Use

The Wells Project Area provides numerous opportunities for water-based and natural resource-based recreation. The project area provides opportunities for locally generated day-use recreation and destination or overnight recreation.

Water-based recreation opportunities include fishing, power boating, jet-skiing, swimming, canoeing and windsurfing. Fishing derbies are held on the reservoir every year, as are numerous hydroplane competitions. The lower reservoir from Brewster downstream to Wells Dam is particularly well-suited for power boating due to its depth and width. Above Brewster, the reservoir, with its shallow depths, aquatic weed growth, and varying flows, is well-suited for fishing, with some extremely shallow areas not conducive to boat traffic.

Natural resource-based recreation opportunities in the project area include: fishing; waterfowl, upland birds, and deer hunting; wildlife viewing and photography. Day-use opportunities include fishing, swimming, picnicing, boating, walking or hiking, and visiting the playgrounds.

Destination or overnight recreation opportunities include whitewater rafting on the Methow River, fishing on the Methow River and on the reservoir, power boating, and RV or tent camping in Pateros, Brewster, and Bridgeport.

Both local day users and overnight visitors enjoy numerous special events that are held every year in or near the project area. Pateros hosts a weekly flea market throughout the summer in Memorial Park, as well as the Apple Pie Jamboree, a motorcycle meet, a fishing derby, and several hydroplane competitions. Brewster and Bridgeport each host an annual civic celebration that brings visitors to the city parks, including a juvenile fishing derby in Marina Park at Bridgeport.

Information on estimates of recreational use of the project area was gathered from:

- campgrounds at Brewster and Bridgeport;
- informal observations on weekdays and weekends in 2002; and
- discussions with recreation providers and resource managers (Park Hosts) in the area.

This information is discussed in detail in Section 4.4.

Section 4

Determination of Recreational Need

This section describes the methods used to determine recreational demand and need in the vicinity of the Wells Project.

Recreational demand is a measure of how many people participate or desire to participate in a given activity. Recreational demand is typically expressed in terms of a surplus or deficit of recreation opportunities or recreation facilities. Because the goal of this 2002 Update is to determine the need for improvements to existing facilities or the need for additional facilities, recreational demand is discussed and assessed here in terms of recreation facilities.

For the purpose of determining the need for improved or additional recreation facilities at the Wells Hydroelectric Project, a discussion of recreational demand at the Wells Project and in central Washington was undertaken with officials from each community and participating stakeholder agency. Information on demand and need was gathered from several sources:

- Washington's 2002 Statewide Comprehensive Outdoor Recreation Plan (SCORP);
- Consultation with tribal, federal, state, and local agencies and community governments;
- Anecdotal information regarding facility use levels and use patterns gathered from city officials, District employees, and resource managers/camp hosts in the area.

4.1 Statewide Comprehensive Outdoor Recreation Plan (SCORP)

The Washington State Interagency Committee on Outdoor Recreation (IAC) prepares a Statewide Comprehensive Outdoor Recreation Plan (SCORP) every five years. The SCORP is a planning document designed to "prepare and update a strategic plan for the acquisition, renovation, and development of recreational resources and the preservation and conservation of open space" [RCW 43.99.025(3)].

Washington's most recent SCORP was prepared in 2002. The main document of the 2002-2007 SCORP, *An Assessment of Outdoor Recreation in Washington State*, includes an inventory of current recreation resources and forecasted future demand for recreation resources throughout the state. This SCORP document has been approved by National Park Service and has been accepted by FERC as a replacement for previous SCORP documents. The SCORP does not provide project-specific recommendations. Brewster's Recreational Plan references a number of statistics and comments from the 2002 SCORP document. (Also see Appendix G for additional SCORP participation and usage graphs and tables from pages 6, 7 and 8 of the IAC *Assessment* to better reflect statewide data)

According to the 2002 SCORP, the interest in and use of recreational demand trend data and recreation facility inventory data traditionally provided in the SCORP is very low among recreation planners and managers throughout the state, but it does give an insight to projected uses statewide which benefits planning for recreation facilities adjacent to the reservoir. For this and other reasons, the 2002 SCORP provides only a cursory update of the recreational demand and inventory data. SCORP lists currently popular statewide recreation activities and the recreation activities expected to exhibit high growth from 2002-2007 on page 36. Activities that are currently available in the project area are indicated in **bold type**.

TABLE 2
POPULAR RECREATION ACTIVITIES IN WASHINGTON STATE

CURRENTLY POPULAR ACTIVITIES		ACTIVITIES EXPECTED TO EXHIBIT HIGH GROWTH, 2002-2007	
1	Walking for pleasure/exercise (streets, trails and pathways in parks)	1	Walking (streets and neighborhood parks)
2	Running/jogging (trails and pathways)	2	Bicycling
3	Visiting zoos, fairs	3	Participating in field sports
4	Bicycling (streets and trails)	4	Golfing
5	Mountain bicycling (hills and un-improved roads adjacent to reservoir)	5	Camping
6	Tent camping (campgrounds)	6	Mountain bicycling
7	Tent camping (backcountry)	7	Running/ jogging
8	RV camping (3 RV park locations)	8	Sport fishing
9	Day hiking (Chief Joseph Park area)	9	Picnicing
10	Attending sports events	10	Participating in court sports
11	Golfing (adjacent Alta Lake State Park)	11	Attending sports events
12	Power boating (various river locations)	12	Day hiking
13	Water skiing/jet skiing	13	Attending cultural/musical events
14	Sailing	14	Swimming/swimming outdoors
15	Canoeing/kayaking	15	Bird watching/wildlife viewing
16	White water rafting (Methow River)	16	Driving for pleasure (sightseeing) Hunting
17	Wind surfing	17	Boating
18	Sunbathing/ Beach combing	18	Power boating
19	Rock Climbing (not organized location(s))	19	Hiking Cross country skiing
20	Attending music/cultural events	20	Gardening

Source: *State of Washington Outdoor Recreation and Habitat: Assessment and Policy Plan 1995-2001, p.34*

Activities currently available in the project area are indicated in bold type. Items 1 thru 10 above are the Top 10 list of "popular and growing activities" listed in the 1995 IAC survey and verified in the 2002 SCORP.

The SCORP makes several recommendations and identifies several findings pertinent to the 1995 Plan and 2002 Update. These findings are grouped below into three categories: water access, State Park camping opportunities, and resource protection. In preparing Section 5 of this Update, the District considered and addressed these findings from the SCORP.

Water Access

- Strong public demand for water access continues to be unmet, numerous boat launching locations are substandard and in need of repairs and maintenance. Much of the water is inaccessible from land base.

- Priority should be given to water access projects that serve multiple state objectives (recreation access, habitat preservation, and watershed restoration), and provide trail opportunities.
- IAC recommends that State Parks continue to provide services for recreational boating, while considering additional facilities on significant water bodies such as the Columbia River.
- The IAC favors trail development projects that include high projected use, barrier-free opportunities, linkage between and among communities and other trails, water access, scenic values, and wildlife values.

State Park Camping

- IAC recommends that State Parks expand camping opportunities for those seeking predominantly natural settings; and expand existing parks, especially those convenient to populated areas.
- There is a need for additional State Park lands and facilities as well as a need to properly care for lands and facilities already in public ownership to serve the growing population.
- Washington State Parks is struggling to continue to meet high public demand with declining resources.
- When funds are available, priority consideration should be given to State Park acquisitions and developments that expand camping opportunities, provide additional types of compatible use at existing sites, solidify ownership by acquiring in-holdings, and preserve a site or feature of statewide significance for future use as a facility.

Resource Protection

- There is a need for the acquisition and protection of additional natural areas and wildlife habitat, as well as a need to properly care for lands already in public ownership.
- When considering the acquisition of natural areas, priority should be given to sites that represent a natural area type, possess excellent ecological quality and/or diversity, offer connectivity and long-term manageability, protect critical habitat and/or threatened species, and (where appropriate) have potential for low-impact public use.

SCORP's Concern

In 1990, IAC reported 76% of Washington's households walked or hiked for recreation. In 2002, 53% of Washington's population participated in the same category which is a significant drop. There has been an approximate 20% increase in statewide population during this same time. Increased crowding at recreation sites is mostly due to the increase in population but at the same time this population increase has resulted in an apparently growing number of inactive people. The Department of Health has reported that as much as half of the state's population is "at risk" of problems associated with obesity resulting from inactivity. Solutions to this problem include an improved public infrastructure that encourages people to "walk, jog or ride a bicycle". Parks should contain this required infrastructure (trails, roads and pathways) to the extent possible. These infrastructure elements should allow the public to participate in many levels of exercise including even the most sedate of a short walk and the opportunity to view nature, photograph natural scenery and observe wildlife in its natural habitat.

4.2 Agency Consultation

In preparing this plan Update, the District consulted with tribal, federal, state, and local communities, agencies and community government officials. Appendix A contains letters sent by the District to agency and government personnel to solicit their input in the preparation of the Update. The stakeholders are also identified in the Appendix. Specifically in the District's March 18, 2002 letter, agencies and governments were asked to provide:

- recreational use estimates for the Wells Project area and nearby recreation facilities;
- existing recreation plans and policy statements; and
- suggestions for access and facility improvement, or new facility development.

Limited recreational use estimates were provided by the Stakeholders only anecdotal information was provided at best and a list of requested facilities or improvements. Agency and government plans and policies, and their suggestions for improvements and new facilities are presented below:

Colville Tribe

The District invited representatives of the Colville Tribe to meet with the other agencies at the District's Headquarters for the April 16, 2002 kick-off meeting of this plan update. No representatives attended the initial meeting and the Colville Tribe did not have any specific written suggestions for improvements to recreation facilities at the Wells Project at this time. The Tribe verbally requested the District continue to inform them of recreation development plans, especially when reservation lands were under consideration.

Washington State Parks and Recreation Commission

The District met with representatives from State Parks at the initial kick-off meeting held at the District's Headquarters at 9:00 AM, Tuesday, April 16, 2002. Some discussion was held regarding the negotiations with State Parks for the District's purchase of Chief Joseph State Park. State Parks and the District will continue to research alternative sites for a property to replace Chief Joseph State Park. During negotiations, the District will continue to meet the annual financial obligation (\$25,000.00) identified in the 1983 Interlocal Agreement. The final agreement for the transfer of Chief Joseph State Park to the District, including allocation of the funds from the 1983 Interlocal Agreement, will be subject to Federal Energy Regulatory Commission approval.

State Parks along with IAC members also noted the declining activity rates of the ever growing population and the need to develop low impact trails and pathways to encourage walking, jogging and bicycle riding. This appeared to be a request of this stakeholder, to develop more trails.

City of Pateros

The District met with representatives from the City of Pateros at the kick-off meeting and a subsequent meeting held in Pateros with Mayor Gail Howe and interested community members. The District also received a written request from the City of Pateros for various improvements. Officials expressed an interest in the following improvements to recreation facilities in the Pateros area:

- *Install ADA accessible sidewalks from street into kitchen pavilion and gazebo/river trail Memorial Park*
- *Install electrical sub-panel and outlets for vendors along the street at Memorial Park*
- *Install playground equipment, fall protection and perimeter playground containment at Memorial Park*
- *Install metal benches at the boat launch and entrances to the docks at Memorial Park*
- *Replace existing wooden picnic tables with aluminum picnic tables-(3) 8'-0 tables with ADA accessible ends and (5) standard 8'-0 tables with integral benches*
- *Resurface the existing tennis court(s)*
- *Design and install an irrigation system and "dryscape" landscaping for the area adjacent to the boat launch area including weed barrier fabric, add underground irrigation at the lawn areas to avoid hoses across pathways*
- *Design and install "dryscape" landscaping adjacent to the tennis courts including weed barrier to control noxious weeds and minimize landscape maintenance*
- *Develop a 6-month maintenance schedule for inspection and maintenance of the docks and to replace pins/bolts that retain the docks in place along with other maintenance items*
- *Review and update the existing maintenance agreement for the various parks*
- *Design and construct a permanent bandshell between the Riverfront Trail and the water's edge near the kitchen pavilion*
- *Design and install City maps (indicating City Buildings and Streets) at each end of Memorial Park*
- *Provide maintenance and operations funds for parks and tennis courts*
- *Review and update electrical systems at City Hall*

A concern was also raised regarding the possibility that the private RV park was to be abandoned for a motel site. The District's Planning Consultant suggested the City develop statistics to validate a need for RV parking in Pateros area for this update. This information or a subsequent

request for an RV parking area did not get to the District or its Planner to be addressed in preparation of this Updated Plan.

City of Brewster

The District met with representatives from the City of Brewster and received a "draft" copy of the Brewster Comprehensive Park and Recreational Plan. Brewster Officials expressed an interest in the following improvements in the Plan:

- *Design and provide for additional improvements to the Riverfront Trail including: weed barrier, dryscape landscaping, irrigation and additional lighting throughout the length of the trail*
- *Replacement of existing wood picnic tables with new aluminum tables including ADA accessible units*
- *Encourage School District to develop joint use agreements with the City for use of existing fields and facilities*
- *Convert multi-use fields to soccer fields*
- *Construct new restrooms at sports fields*
- *Create and fund Activities Director position*
- *Provide for swimming pool upgrades including covering for winter use*
- *Design and construct a fitness trail*
- *Design and construct a bandshell*
- *Add lighting to existing sports fields*
- *Provide additional RV parking including winterized units*
- *Develop additional new park lands*
- *Provide improvements to Youth Boxing Center/ Weight Room*

Numerous items included in the above list are identified in the new Brewster Comprehensive Park and Recreation Plan and were not solely identified as to be provided by or funded by the Douglas County PUD but are to be considered as potential projects with some or all funding coming from other agencies, funds, city appropriations, etc.

The City of Brewster's Park and Recreation Comprehensive Plan also identified a public need for additional benches and seating areas at Columbia Cove Park.

City of Bridgeport

The District met with representatives from the City of Bridgeport. Bridgeport officials expressed an interest in the following improvements to recreation facilities:

- *Replace the old and dilapidated covered shelter with a gazebo to match the current smaller unit on the peninsula adjacent to the swimming lagoon*
- *Rework the bank (above ordinary high water mark) around the swimming area for juvenile fishing "platform" with pavers and sand/gravel*
- *Cut tree roots, patch and repair and re-pave portions of the ACP trail*
- *Replace piling at the swim float and relocate piling on the dock to align the dock with the launch ramp*
- *Install lighting at the boat launch*

Additional Concerns

Additional items per meeting with WSDOT, DCPUD staff members and users of various PUD Facilities:

- *The District proposed deceleration lanes, right turn lanes and left turn lanes at (2) DCPUD owned locations - Starr Boat Launch and the Wells Dam Overlook*

4.3 Public Comment

Following are comments (with responses from the District to each comment) received from the various Agencies and Stakeholders associated with the Wells Reservoir. Copies of the complete letter(s) are included hereafter in Appendix F.

**Interagency Committee for Outdoor Recreation
Jim Eychaner, Resource Planner
Letter of November 21, 2002**

Amend the discussion of the SCORP on pages 16-18 (Section 4.1).

The District will change the title of Section 4.1 to reflect the title of the 2002-2007 SCORP as being An Assessment of Outdoor Recreation in Washington State and amend the discussion to reflect the new Assessment.

The Assessment has been approved as Washington's SCORP.

The District will add language that reflects the approval of this SCORP document by the National Park Service and its acceptance by FERC as a replacement for previous SCORP documents.

Assessment recommendations for non-federal hydropower projects licensed by FERC.

The District considered page 62, IAC Assessment, identifying IAC recommendations for non-federal licensed projects. Douglas PUD has developed multiple facilities on the Wells Project that provide many of the IAC recommendations and on-water recreation.

As recommended by IAC, the District's recreation planning has historically provided protections for the natural environment where man is not dominant. Additionally, Douglas PUD has provided maintenance and operations assistance to other agencies in excess of existing facility management agreements.

Replace or augmenting Table 2, page 17.

The District will include in appendix F the tables on pages 6, 7, & 8 of the IAC Assessment to better reflect current statewide data.

Consider the draft technical report Estimates of Future Participation in Outdoor Recreation in Washington State in future Recreation Planning.

The District will consider this document in future planning efforts.

**Washington State Parks and Recreation Commission
Jim Harris, Eastern Region Manager
Letter of November 21, 2002**

The Washington State Parks and Recreation Commission supports *"the document as written."*

**Washington State Department of Transportation
Fredrick M. Sutor, Transportation Planner
Letter of November 27, 2002**

Washington Department of Transportation states *"We believe the improvements listed for Starr and Wells Dam intersections will preserve the operational integrity and improve safety for the traveling public..."*

**City Of Bridgeport
Steve Jenkins, Mayor
Letter of December 4, 2002**

"The City supports your effort...and we greatly appreciate the partnership that you have extended..."

City Of Brewster
Bonnie House, Mayor
Letter of December 12, 2002

1. The City of Brewster suggests more face-to-face meetings...

The District invited all affected communities to participate in this planning effort (Appendix A). Following the initial consultation District staff met with Mike Shenyer, Brewster Public Works Director, several times regarding this planning effort and ADA sidewalks at Columbia Cove Park. In future planning efforts, the District will provide a meeting schedule in an effort to create additional opportunities for involvement by the local communities.

2. We feel the Recreation Action Plan should reflect the wants and needs of the communities, not the Douglas County PUD.

The recreation planning efforts of Douglas PUD are an on going responsibility of the Federal Energy Regulatory Commission license for the Wells Hydroelectric Project. The District's planning responsibilities cover a significant area and attempt to balance the needs of multiple resources while addressing the concerns of local communities. In preparation of this Plan, the District reviewed the Park and Recreation Plan provided by Brewster and identified those projects meeting the criteria for consideration. The District has included projects from the Brewster Park and Recreation Plan that meet the criteria of relevance to issues of public access to Wells Project lands and waters.

3. The Plan refers to an implementation date in approximately 10 years; due to the poor economic conditions in our area, we highly recommend that the PUD implement any upgrades as soon as possible.

The Plan covers a five-year window, 2002-2006. The District intends to implement the Plan within that time frame. An anticipated construction schedule has been added to Section 6.

4. The City could have used at least 4 more copies of the draft plan.

The District would have provided additional copies if requested. This comment will be considered as a request for five (5) copies on any future submittals to Brewster.

5. The City of Brewster also concurs with the comments submitted by the City of Pateros.

Please refer to District comments on the Pateros letter dated December 2002.

City of Pateros
Gail Howe, Mayor
Letter of December 2, 2002

Major Points 1 - 5 from letter

1, "...opportunity to discuss...elements...we consider essential and were not addressed in the draft plan (i.e. stage, operation and maintenance funding, etc.)."

The District considered all the proposals presented to the District in the memo of April 17, 2002. These proposals were discussed during the on site meeting with Mayor Howe and Councilman Brady. These proposals were discussed again with Councilman Brady during subsequent phone conversations and meetings with the Consultant and District staff. The memo of April 17, 2002, is included in Appendix B of the Update. Section 4.2 of the Update outlines the requested improvements and Section 5 addresses the District's proposed actions on these items.

2, "...redefine "water-based recreation"..."

The District believes the appropriate focus of recreation planning for the Wells Hydroelectric Project is the relevance of proposed improvements to issues of public access to Wells Project lands and waters. This includes a review of proposed improvements to the criteria listed in Section 5 of the Update.

3. *With the removal of Chief Joseph State Park from the Plan, we suggest that the PUD begin discussions with the affected entities to replace this major recreation component within the immediate Wells pool.*

Discussions regarding the replacement of undeveloped Chief Joseph State Park have been on going for several years. As an action item in the 1997 Recreation Action Plan, public participation was invited, and initial public meetings were held at the Pateros City Hall (1999). Additionally, State Parks held a public meeting on August 2, 2001, requesting public participation on the future use of Chief Joseph State Park and comments on local properties identified as potential substitute park sites. This meeting was attended by Wells Project area citizens and local community representatives.

4. *The statistical comparisons used in the report are biased, and other comparisons are more appropriate.*

The District will arrange a meeting with representatives of Pateros to clarify what comparisons they consider biased and identify their definition of "other comparisons."

5. *We think the representatives from all three communities should be involved in the planning process.*

The District invited participation from all three communities as well as other area recreation providers (see Appendix A). The communities of Brewster and Bridgeport did not respond to the invitation to participate in this planning process. Subsequently, District staff contacted these

communities individually. The District welcomes participation from all area recreation providers but can not force participation.

Comments to attachment

Section 1,

Plan should consult more with the IAC, Okanogan County and State Tourism and Economic Development organizations and should involve more meeting and planning with affected cities

The District invited participation from Interagency Committee for Outdoor Recreation (IAC) and Okanogan County. IAC attended a meeting on April 16, 2002. At this meeting IAC indicated their desire that the District incorporate the new State Comprehensive Outdoor Recreation Planning document (SCORP) into the 2002 Recreation Action Plan Update (see Section 4.1).

Okanogan County did not respond to the District's invitation to participate in this Recreation Action Plan Update.

The District has relied on State Parks and the IAC to provide a statewide perspective. Therefore, State Tourism and Economic Development organizations were not invited.

Section 1.2

National Park Service should not be the lead agency on planning recreational use on the Wells pool.

National Park Service is not the lead agency on recreation planning for the Wells Pool. NPS provides comments; the District has always provided the leadership roll in planning for recreation associated with the Wells Project.

Section 1.3

The need versus demand misses significant opportunities and compares non-similar parks.

The District evaluated all known opportunities available on the Wells Project in preparation of this plan. The District will ask the Pateros City Council for a list of recreation opportunities missed in this evaluation and arrange a meeting to review these opportunities.

The District recognizes the differences in the characteristics of the parks in the Wells Project area. Memorial Park in Pateros is oriented to day use, Columbia Cove Park in Brewster offers both overnight opportunities and day use, and Marina Park in Bridgeport is geared to overnight RVs. Alta Lake State Park, Bridgeport State Park, and Pearrygin Lake State Park are destination facilities geared to multiple activities. The intent of this Plan is not to compare parks, but to identify Wells Project area opportunities.

Section 3.1

Note should be made that Fort Okanogan museum is currently closed.

The District will identify that the Colville Confederated Tribes have currently closed this facility.

Table 1

What is the percent of Douglas County PUD revenue spent on recreation? How does that compare with other PUDs?

Table 1 is an historical overview of recreation developments for the Wells Project. It does not reflect recreation spending. The District spends approximately 1 % of the Wells Project expense budget on recreation (2001-2002 fiscal budget). The District has not taken a survey of recreation spending by other utilities.

Table 2

Table 2 does not provide information that is relevant to the report or the PUD. State Parks day use is sure to plummet with the increased day use fee, while the use of "free" parks like Pateros is likely to increase significantly (no mention of State Parks fee increase in plan).

The District believes Table 2 from the SCORP document is relevant as it provides an overview of recreation demands and trends on a state wide basis. The Washington State Interagency Committee for Outdoor recreation has requested that its most recent SCORP document be included.

Implementation of a day use fee at State Parks in the surrounding area may increase usage of the recreation facilities on the Wells Project that do not have a day use fee but that is yet to be seen.

Section 4.2

Consultation not adequate at the local level. We would be happy to meet with the consultant several more times and in fact expect to.

The District believes consultation was adequate to collect recreational use data, discuss the desires of local communities and complete the analysis associated with this Plan. Following the initial April meeting, the District and our Consultant met with representatives of Pateros at Memorial Park to review issues specific to Pateros. These issues were taken into consideration in developing the 2002 Update to the Wells Recreation Action Plan.

The PUD has never suggested that the towns gather more user information nor have they suggested there was a need for that information.

The District is not asking or suggesting that local entities collect recreation use data. The District collects data through out the Wells Reservoir, including Pateros, for reporting to the Federal Energy Regulatory Commission (FERC Form 80). The level of recreation data collection and planning each agency is willing to undertake is a local option and not directed by the District. To assure that all possible local recreational use data were considered in this plan, the District requested all available recreation use data area recreation providers may have collected. The City of Pateros did not provide additional recreation data. The City of Brewster provided a copy of its recently adopted Park and Recreation Plan, IAC provided its recent Assessment of Outdoor Recreation in Washington State, and Bridgeport provided information on overnight RV use.

No information was provided on the loss of recreation due to the collapse of the development plan (which was promised since at least 1967), nor what were the possible remedies for that loss.

The 1967 Public Use Plan did not propose an analysis of potential loss of recreation opportunities as a result of construction of the Wells Project. This document was a "plan" by which the District in partnership with State Parks and others could provide recreational opportunities in the Wells Project area. This 1967 Plan did not "collapse", but was fully implemented with the exception of the development of Chief Joseph State Park (1982 Public Use Plan, page 39). Chief Joseph State Park was not developed early on due to a lack of funding by the State. Subsequently, as part of the 1982 pool raise for the Wells Project, the District provided funding for project planning through an Interlocal Agreement (1983). To date this funding has amounted to \$500,000.00. Additionally annual payments of \$25,000.00 will be made to State Parks through the term of the license.

Changes in environmental regulations and conditions, extensive development of wildlife resources on adjacent lands, and an evaluation of the parks feasibility, resulted in State Parks decision to eliminate Chief Joseph State Park's development. Please refer to Section 5, paragraph 4, for State Parks determination at to the feasibility of developing this Park. The District took the lead in remedying the loss of recreation opportunities by addressing a substitute site for Chief Joseph State Park in the 1997 Recreation Action Plan Update. Currently, the District and State Parks are in negotiations for the District's purchase of the undeveloped Chief Joseph Park site. The funds received by the State through this transaction as well as funds associated with the 1983 Interlocal Agreement are dedicated to recreation opportunities in the market area identified in the original 1967 Public Use Plan.

Section 4.4

Current use data fails to address development that would increase usage, lack of available sites on SR97 (State Highway 97), or comparisons with Chelan PUD sites downstream.

Current use data reflect the current use of recreation facilities on the Wells Project. This plan is not intended to evaluate conceptual projects or how they may increase reservoir usage and promote economic development in Pateros.

An action item from the 1997 Plan identified the "lack of available sites on SR97." This action item looked at the availability of RV sites and found a surplus of available RV sites on all but a few major holiday weekends (1997 Recreation Action Plan, Section 4.4). Evaluations of current use data continue to indicate RV site availability on most weekends.

The Wells Project and the Rocky Reach Project have significant differences in shoreline topography, public access roads, wildlife development, and demographics. Historically, beginning with the 1967 Public Use Plan, the District identified the development of natural recreation where man was not dominant. The District has continued to promote and protect the natural environmental and wildlife values associated with the Wells Project area. Therefore, a comparison between the Rocky Reach facilities and the Wells Project facilities is not appropriate.

Boat recreation is hampered by the lack of passage at Chief Joe (Chief Joseph Dam) and Wells for movement up and down river, but no discussion is provided about solving that problem. Also, current dock design is not boater friendly.

No hydroelectric project above McNary Dam on the Columbia River has navigation locks. The installation of navigation locks at Chief Joseph Dam and the Wells Project is beyond the scope of this Plan.

The docks in Pateros were architecturally designed and provide over 400 lineal feet of docking space. These six docks provide docks to facilitate launching (2); straight docks provide mooring and water skiing access (2) and T-docks that will accommodate fishermen (2). The design of these docks was based on requests from Pateros representatives and design elements were accepted by the City of Pateros in the 1987 and 1992 Recreation Action Plans.

Day Use Facilities

Addition of an outdoor stage in Pateros would dramatically increase usage, removal of the historical buildings, trees and businesses severely impacted recreation within Pateros.

The District determined that the covered stage requested did not meet the criteria for being relevant to issues of public access to Wells Project lands and waters.

The District did remove buildings, trees, and business with the original development of the Wells Project in the mid-1960s. Economic mitigation for these losses was compensated through an agreement with Pateros (1964).

The level of recreation on the Columbia River was very limited prior to the development of the hydroelectric system. The development of the Wells Project Reservoir stabilized the river level allowing improved water access and additional recreation opportunities (1967 Public Use Plan).

Section 5

Water based activity is too limiting a definition for use on the Wells pool, while other data discussed contained non-water based recreation.

Activities directly related to the Project (i.e. relevant to issues of public access to Wells Project lands and waters) are the focus of this plan. This is consistent with the original 1967 Public Use Plan developed for the construction of the Wells Project and subsequent updates. The District believes that recreation planning relevant to issues of public access to Wells Project lands and waters is appropriate for this Update.

All forms of recreational opportunities were reviewed to fully understand the inter-relationship of recreational opportunities in the Wells Project area.

Removal of Chief Joe State Park should be replaced with other parks or significant improvements to existing parks located on the Wells pool, which would create far less environmental impacts.

The decision to not proceed with the development of Chief Joseph State Park is due to changes in "public preference and environmental considerations" (State Parks determination August 2, 2001) and the current State Parks preference of expanding existing facilities in lieu of developing new facilities (Javier Figueroa, State Parks Lands Program Manager). The transfer of recreational opportunities associated with the undeveloped Chief Joseph State Park is remaining in the Wells Project recreation area as defined in the 1967 Public Use Plan Market area: that area within 50

road miles of the project waters. The expansion of existing facilities will create far less environmental impacts to the Wells Reservoir which is consistent with the 1967 Public Use Plan and subsequent updates.

In general, the proposed PUD projects are far too modest in scope. The draft fails to address our proposal for a stage; does not discuss our signage needs; does not discuss the need for RV parking; does not discuss steelhead fishing; and the additional use of parks, docks, and restrooms; and completely ignores the need for operating and maintenance funding for the three cities.

The estimated cost of implementing the 2002 Update is nearly \$1,000,000.00, which the District considers far from modest. District has spent an averaged of over \$1,000,000.00 in the previous three recreation plan updates

This plan does consider the proposal for a stage and signage by Pateros (Section 4.2). The criteria used to screen and prioritize recreation improvements (Section 5) were applied to these requests

The 1997 Recreation Plan indicated availability of RV sites around the Wells Reservoir on most weekends with the facilities at Brewster never exceeding 90% capacity. The current Recreation Plan evaluation of RV site usage included a request for information to validate the need for an RV park in Pateros. Pateros did not provide information for the 2002 season to validate the request for an RV park (Section 4, page 20). Without new information on RV usage, the conclusion continued to support the findings of the 1997 Recreation Plan; therefore, additional RV park development is not included in this Plan.

At the time this Plan was being developed steelhead fishing was prohibited by the Washington Department of Fish and Wildlife for the protection of steelhead which are listed as "endangered" under the Endangered Species Act by National Marine Fisheries Service (NMFS). The District through extensive involvement and participation in the fisheries arena did not expect the opening of a fishing season on an Endangered Species Act listed fish. This season opened in mid-October on a limited basis with no guarantee of annual seasons continuing and well after this draft document went to print. If NMFS continues to allow a steelhead fishery on the Wells Reservoir, the District will evaluate the need for additional water access facilities on the Wells Reservoir.

The District and the cities of Pateros, Brewster, and Bridgeport entered into agreements (1987 Action Plan) in which the cities would provide the maintenance and operations of recreation facilities constructed in conjunction with the District's Recreation Action Plans. Because of limited maintenance budgets being provided by Brewster and Pateros, the District committed funding for major maintenance items in the 1997 Recreation Plan. The tennis court located in Pateros (used by both Pateros and Brewster high schools) was resurfaced, the docks in Pateros, Brewster, and Bridgeport were removed and repaired, all restrooms and picnic shelters have been repainted, and the shoreline trail in Brewster has been cleared of unwanted vegetation. Although the District has not directly funded daily operations and minor maintenance, the District has provided significant funding for large ticket maintenance items.

There is no schedule for construction of the projects that were approved, so we can not plan around when improvements will occur.

No construction schedule was developed for the action items identified in this plan. The District will provide a construction schedule. A construction schedule will be inserted as Table 9 in Section 6.

The turnout at the boat launch just north of Wells Dam is a major expense and has little to do with recreation, but is included in the plan. This area is mostly an outhouse and garbage dumpster.

The turnout at Starr Launch (just north of Wells Dam) is a District recreation facility that provides the only public access to the lower reaches of the Wells Reservoir. This area of the Wells Reservoir is popular with waterfowl hunters that typically use smaller boats in crossing the reservoir to access a wildlife mitigation area. This launch is used extensively during the recreational hunting season.

Improvements to the Starr launch were originally identified as a safety need in 1993. Improvements were limited to a concrete launch, shoreline plantings, and a vault toilet due to safety issues relating to left turns from Highway 97 and the inability to secure a permit from Burlington Northern Railroad for crossing improvements. The ownership of the railroad has changed and preliminary discussions with the local office of Cascade and Columbia River Railroad indicated a willingness on their part to cooperate with the District to improve the railroad crossing and access safety.

4.4 Current Use Data

In preparing this 2002 Update, the District reviewed the 1997 Update data gathered for available use estimates and occupancy rate information from recreation facilities at the Wells Hydroelectric Project and in the central Washington region. Anecdotal information regarding facility weekend and weekday, 2002, use levels and patterns was gathered from city officials, resource managers in the area, camp hosts and informal observations by the District's Planner during the time this updated plan was being prepared and compared to the information in the 1997 Update. The District commissioned a park survey to complete the requirements of FERC Form 80, which is to be submitted by the end of this year. Data from the survey of the following sites is contained in Appendix E: Methow River Parking Lots, Wells Dam Overlook, Pateros Memorial Park, Brewster Columbia Cove Park and Bridgeport Marina Park. Finally, the District reviewed the general terms of the "State Comprehensive Outdoor Recreation Planning Document (SCORP) 2002-2005", Public Review Draft Copy (March 2002), specifically Chapter 4-"Recreation Needs Analysis".

In general, even weekend use of the project area is below capacity. In 1996, data indicates the campground at Columbia Cove Park in Brewster was never filled to capacity. This does not appear to have changed much in subsequent years as evidenced in the District's survey results included in Appendix E. The campground at Marina Park in Bridgeport was occasionally full on holiday weekends or special events during the last year according to the Camp Host. The Camp Host also noted grassy areas for tenting were full over the Labor Day weekend and some vehicle parking spots were occupied by additional RVs.

Campgrounds

From previous plan updates, data from five State Parks in central Washington demonstrate that the campgrounds at these parks were at least 90 percent full on 12 out of 13 weekends during the peak summer season. Four out of the five parks were at least 90 percent full on more than half of the weekdays during this same period.

Data from two municipally operated campgrounds in the Wells Project area demonstrate that the campgrounds located on the immediate shores of the Wells Reservoir received significantly less use than the State Parks in the general North Central Washington region.

The RV campground at Columbia Cove Park in Brewster has 21 RV campsites available for rent by the night, week, or month. Tent camping is permitted, with rates the same as those for RV camping. The campground is staffed by a volunteer host. Based on interviews with park inhabitants, the park was seldom over 90% full, and at times only a handful of campers could be seen using the facilities.

The campground at Marina Park in Bridgeport has 16 RV campsites and two designated tent campsites (tent camping is also permitted in the RV area at full rates). The campground is staffed by a salaried host and a volunteer, part-time maintenance person. The campground was full on occasional holiday weekends and for special community events. It had vacancies most week days, but used more during the summer vacation season than in previous years.

Day-Use Facilities

According to city officials, campground hosts, and District personnel, day-use facilities at the Wells Project receive occasional heavy use, but facility capacity is rarely exceeded. Exceptions to this include:

- Special events in Pateros when parking in the immediate vicinity of Memorial Park becomes crowded. Parking remains readily available a short distance from the park and at vacant city lots.
- During the Methow River whitewater rafting season (May through June or July), the Highway 153 access area becomes crowded with cars and buses on Saturdays and Sundays. A second, undeveloped and informal raft takeout site located upstream from the designated area absorbs much of the overflow.
- While the boat launch parking area at Columbia Cove Park in Brewster typically does not reach capacity, boat tie-ups and day-use moorage at Columbia Cove are often filled to capacity on summer weekends and, as currently observed, during salmon fishing seasons. Additional boat docks were proposed in the 1997 Update. The proposed dock improvement is currently out for agency permitting with construction anticipated in 2003.
- Day-use moorage and tie-ups at Pateros' Memorial Park can often times reach capacity during special events and during the week in the spring and fall when fishing is allowed in this stretch of the Columbia.
- On some weekends during the summer, 2002, salmon fishing season, District Staff observed approximately 150 boats on the reservoir near the mouth of the Okanogan River. This impacted boat launches, parking lots and docks on the reservoir for short durations of time.

Section 5**District Response to Recreational Need**

As it has done in its previous recreation planning efforts, the District will respond to the needs identified in the 2002 Update efforts with a recreation action plan that will help to satisfy existing and future recreation demand in a manner that balances recreation demand with other uses of the resource. In developing the 2002 Update (as with previous updates), the District used the following criteria to screen and prioritize recreation site improvement options:

- Impacts of project operations on the recreation resource or facility;
- Relevance of proposed improvement to issues of public access to project lands and waters (is the proposed project a Water Based Recreational Activity?)
- Conformance with the District's Land Use Policy¹;
- Conformance with the District's commitment to natural resource conservation;
- Importance of proposed improvements to local officials, governments, the public and state agencies;
- Conformance with past agreements between the District and state resource agencies; and
- Conformance with the FERC Order approving the 1997 update.

Based on the above listed criteria, the District has developed the following responses to the recreation needs identified and discussed in Sections 4.2 and 4.3. These responses are intended to acknowledge and incorporate not only agency and public input, but also information included in the 2002 SCORP and discussed in Section 4.1.

Chief Joseph State Park

State Parks has determined that "property known as Chief Joseph State Park cannot advantageously be used for park purposes due to changes in environmental regulations and public preference" and "authorizes staff to negotiate with the Douglas County Public Utility District regarding the sale of Chief Joseph State Park to the District." As the negotiations proceed the District has continued to meet the financial obligation identified in the 1983 Interlocal Agreement (\$25,000.00 annual payment). With the pending sale of Chief Joseph State Park, State Parks has not requested additional improvements to Chief Joseph State Park. As mentioned on page 19, this proposed purchase is subject to Federal Energy Regulatory Commission approval.

Methow River Fishing Access Sites

No request was received from the WDFW for any projects along the Methow River under the current 2002 Updated Plan.

¹ The District approved a Land Use Policy in 1993 (Appendix G). The Policy identifies two goals that are pertinent to recreational development on the Wells Reservoir. First, it is a goal of the District to develop only those recreational facilities that will not interfere with the preservation of natural ecosystems. Second, it is a goal of the District to sustain the existing natural systems associated with the Wells Project and other District lands.

City of Pateros

The City of Pateros provided a list of desired improvements and additions to recreation facilities (Section 4, page 20). From that list, the following items were determined to meet the criteria related to the Wells Reservoir, are water based, and are being proposed for inclusion in this Update.

- 1) Design and installation of ADA accessible sidewalks from the city street to kitchen pavilion and the gazebo/Riverfront.
- 2) Install electrical service upgrade to the kitchen pavilion and electrical power along the city street for vendors.
- 3) New playground equipment with fall protection will be installed in a defined area.
- 4) Annually inspect the docks and repair as needed.
- 5) Install metal (enamel painted) benches and waste receptacles on concrete pads at the boat launches and dock entrances.
- 6) Replace existing wooden picnic tables at Memorial and Peninsula Parks with aluminum picnic tables (three eight foot ADA compliant tables and five standard eight foot tables).
- 7) The District proposes to review the existing maintenance agreement but does not propose funding a maintenance and operations budget for Pateros.
- 8) The District will investigate the annual maintenance requirements for the tennis courts.
- 9) A dryscape planting plan and irrigation system for the area adjoining the Methow River boat launch in Memorial Park will be installed.
- 10) Weed barrier and a crushed gravel surface for the area between the tennis courts and the Methow River.
- 11) Portable aluminum bleachers will be provided.

These improvements are consistent with the District's objectives of focusing 2002 Update efforts on improvements relevant to issues of public access to project lands and waters, addressing issues important to local civic officials, and conforming with the FERC order approving the 1997 Update.

City of Brewster

The City of Brewster has recently adopted a written Comprehensive Park and Recreation Plan. It has identified a number of potential projects in which the District could participate (Section 4, page 21). From the Comprehensive Park and Recreation Plan, the following items were determined to meet the criteria related to the Wells Reservoir, are water based, and are being proposed for inclusion in this Update.

- 1) Improvements to the Riverfront Trail designed to reduce annual maintenance. The final plans for this are not complete but may include one or more of the following; weed barrier, vegetation removal, replanting desirable vegetation, irrigation system improvements, and lighting.
- 2) Replacing existing wooden picnic tables with ADA compliant and standard eight foot aluminum tables.
- 3) The District proposes to review the existing maintenance agreement but does not propose funding a maintenance and operations budget for Brewster.

These improvements are consistent with the District's objectives of focusing 2002 Update efforts on improvements relevant to issues of public access to project lands and waters, addressing issues important to local civic officials, and conforming with the FERC order approving the 1997 Update.

City of Bridgeport

The City of Bridgeport has requested several improvements to Marina Park (Section 4, page 22). From that list, the following items were determined to meet the criteria related to the Wells Reservoir, are water based, and are being proposed for inclusion in the Update.

- 1) Improve the existing covered picnic shelter in the camping area with a new concrete slab, add panels to deflect wind, add handrails, lighting, and ADA compliant access.
- 2) Develop a flat area along portions of the swimming lagoon above ordinary high water. This area will be surfaced with pavers set in a sand/gravel base. The bank of the lagoon will be reshaped to provide safer access with weed barrier and vegetation installed.
- 3) The tripping hazards will be removed from the asphalt trail and deteriorated trail sections replaced. The District will research methods to control unwanted root growth under the asphalt trail.
- 4) Replace deteriorated pilings.
- 5) The District proposes to review the existing maintenance agreement but does not propose funding a maintenance and operations budget for Bridgeport.

These improvements are consistent with the District's objectives of focusing 2002 Update efforts on improvements relevant to issues of public access to project lands and waters, and conforming with the FERC order approving the 1992 Update.

Additional Proposals

The District, through its visual assessment of existing traffic conditions and needed safety precautions at entries to Wells Dam Overlook and the Starr Boat Landing, have included in this 2002 Update, the design and construction of (2) new intersections on Highway 97. The new intersections will include deceleration lane(s), left turn lane(s) (in both east and west directions at Wells Overlook) and right turn lanes into each entry. These will be designed in accordance with WSDOT requirements since this is a Washington State highway.

Section 6 Action Plan 2003-2007

Over the next five years, the District intends to concentrate on improvements to the water access parks in Pateros, Brewster, and Bridgeport; and the access intersections at Starr Boat Landing and the Wells Dam Overlook. The District will review and update the current operation agreement(s) with the City of Pateros, City of Brewster and the City of Bridgeport with respect to the water based parks and recreation facilities the District has constructed over the years.

Tables 3 thru 7 detail the improvements proposed for the upcoming five-year period 2003-2007 and present preliminary cost estimates and total project budgets. These cost estimates are presented in 2002 dollars (unless noted otherwise) and are based on limited details and minimal knowledge of site-specific conditions. These estimates may fall within 10-20% of the actual cost of the proposed improvements when the work is actually accomplished. Overall preliminary estimated cost(s) summary for the 2002 Update is presented in Table 8. Unless otherwise noted, these estimates do not include any permitting costs associated with construction. The overall budget for each site does contain funds for Washington State Sales Tax or Use Tax, Architectural and Engineering design and construction administration fees and Project Contingency fund which may include, reimbursables, printing of construction/bid documents, special materials inspection and testing as required by code, surveys, soils testing, etc. The allowance varies from 25% to 30 % depending on the potential of need based on the projects to be undertaken.

Figure 5 identifies the location of the proposed improvements on the Wells Reservoir. Subsequent drawings present Site Plan Improvements for the tennis courts, Peninsula Park and Memorial Park in Pateros, Columbia Cove Park in Brewster, and Bridgeport's Marina Park.

**TABLE 3
PRELIMINARY BUDGET ESTIMATE:
PENINSULA PARK/BOAT LAUNCH AREA/TENNIS COURT SITE
IMPROVEMENTS**

IMPROVEMENTS	COSTS
Dryscape and grass landscaping and underground irrigation installation @ boat launch (@ banks on both sides of ramp), trail and adjacent park areas	\$40,000
Benches (2 @ \$550 each)	1,100
Picnic Tables (2 @ \$800 each)	1,600
Portable Aluminum Bleachers (50 seats-3 sets @ \$2,250 each)	6,750
Weed Barrier and Gravel at Tennis Courts	2,500
General Conditions/Overhead and Profit (25%)	13,000
Construction Total	\$64,950
Taxes, Fees & Project Contingencies (25%)	16,250
Total Peninsula Park/Tennis Court/ Boat Launch Project Budget	\$82,200

**TABLE 4
PRELIMINARY BUDGET ESTIMATE:
MEMORIAL PARK SITE IMPROVEMENTS**

IMPROVEMENTS	COSTS
ADA Accessible Sidewalks	\$ 3,000
Electrical Upgrades for Vendors and @ Kitchen Pavilion	20,000
Playground and Fall Protection, Perimeter Containment	24,000
Metal Seats/Benches, Concrete Pads & Trash Containers @ Boat Docks Entries	10,500
Metal Picnic Tables	7,000
Preliminary Estimating Contingency (15%)	9,675
General Conditions (8%) Contractor's Overhead and Profit (15%)	17,000
Construction Total	\$91,175
Taxes, Fees and Project Contingencies (30%)	27,350
Total Project Budget for Memorial Park	\$118,525

TABLE 5
PRELIMINARY BUDGET ESTIMATE:
COLUMBIA COVE SITE IMPROVEMENTS

IMPROVEMENTS	COSTS
Metal Picnic Table (portable) (8) including ADA accessible unit	\$5,400
Perforated Metal Trash containers on concrete pads	1,200
Riverfront Trail underground irrigation, weed barrier, dryscape landscaping, repairs to crushed gravel trails	Not estimated until infield survey complete and preliminary design done to indicate actual need
Preliminary Estimating Contingency (15%)	990
General Conditions (10%) Contractor's Over head and Profit (15%)	1,900
Construction Total	\$17,100
Taxes, A/E fees and Project Contingency (30%)	\$ 5,150
Total Project Budget for Columbia Cove Park	\$22,250

TABLE 6
Preliminary Budget Estimate
Marina Park-Bridgeport

IMPROVEMENTS	COSTS
Remodeling of Existing Picnic Shelter	\$ 20,000 allowance
South shore fishing platforms (sidewalks on gravel fill), repair landscaping	15,000
ACP root problem @ ACP-remove and repair paths and repair 100 LF of pathway	5,000
Preliminary Estimating Contingency (10%)	4,000
Contractors Overhead and Profit (25%)	11,000
Construction Total	\$55,000
Taxes, Fees and Contingency	13,750
Project Budget for Marina - Bridgeport	\$68,750

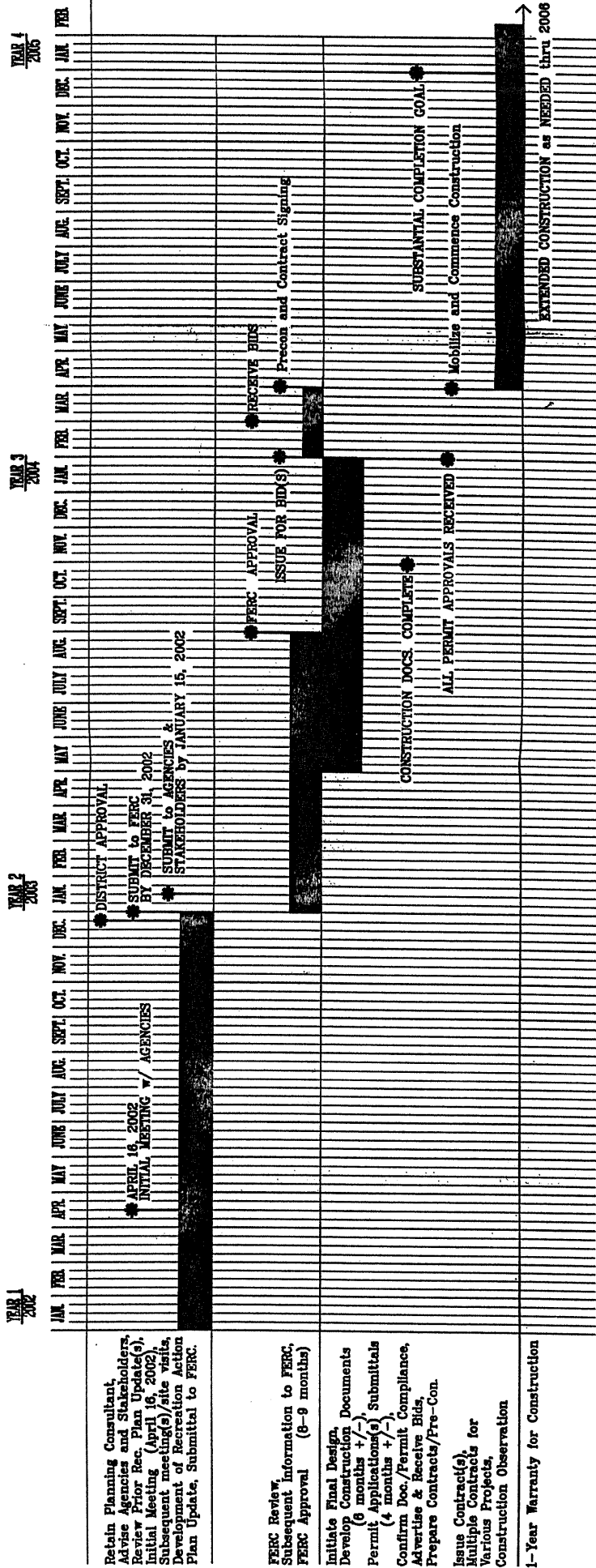
TABLE 7
Preliminary Budget Estimate
Highway Turn Lanes-Wells OverLook and Starr Boat Landing

IMPROVEMENTS	COSTS
SR97/Wells Overlook Turn Lanes (including engineering and Analysis, approvals, CD and CA	\$211,000
SR97/Starr Boat Launch Turn Lanes (including Engineering and Analysis, approvals. CD and CA	181,000
Preliminary Estimating Contingency (10%)	39,200
General Conditions (5%) Overhead and Profit (10%)	64,700
Construction Total	\$495,900
Taxes, Fees and Project Contingency (20%)	98,100
Total Project Budget for Highway Turn Lanes	\$594,000

Table 8
OVERALL PRELIMINARY ESTIMATED BUDGET
2002 ACTION PLAN

SITE	IMPROVEMENTS	COSTS
Peninsula Park, Boat Launch Tennis Courts - Pateros	Improvements itemized in Table 3	\$ 82,200
Memorial Park-Pateros	Improvements itemized in Table 4	118,525
Columbia Cove Park - Brewster	Improvements itemized in Table 5	22,250
Marina Park - Bridgeport	Improvements itemized in Table 6	68,750
SR 97/Wells Overlook and Starr Boat Landing	Improvements itemized in Table 7	594,000
Chief Joseph State Park	Annual contribution to Chief Joseph State Park fund (\$25,000/year) Low impact improvements to Chief Joseph State Park	25,000 Not estimated in this Updated Plan
2002 RECREATION ACTION PLAN UPDATE (2002-2007)		\$910,725

Table 9
RECREATION ACTION PLAN - 2002 UPDATE
Implementation/Construction Schedule
PUD No.1 OF DOUGLAS COUNTY
THE DOH ASSOCIATES, PS PROJECT #0204
DECEMBER 1, 2002



The DOH Associates, PS
ARCHITECTS and PLANNERS
 DOH Job No.: 0204 Date: 12-01-02



1-Year Warranty for Construction

Section 7 References

(Note: many of these following references were used in preparation of the previous updates and are identified herein because numerous portions of the previous updates' text are used herein for Update Plan 2002.)

City of Brewster. (2002) Park and Recreation Comprehensive Plan.

Douglas County. (1995) Douglas County Comprehensive Plan, Capital Facilities Plan Element, Chapter 3: Parks, Recreation, and Open Space.

Hallet, M. (1994) Wells Wildlife Mitigation Program Funding Status and Recommendations. Washington State Department of Wildlife.

Interagency Committee for Outdoor Recreation. (1990) Washington Outdoors: Assessment and Policy Plan 1990-1995 (SCORP).

Interagency Committee for Outdoor Recreation. (1995) State of Washington Outdoor Recreation and Habitat: Assessment and Policy Plan 1995-2001 (SCORP).

Interagency Committee for Outdoor Recreation. (2002) State of Washington Outdoor Recreation and Habitat: Assessment and Policy Plan 2002 DRAFT (SCORP).

PLAE, Inc. (1994) A Pocket Guide: Universal Access to Outdoor Recreation.

Public Utility District No. 1 of Douglas County. (1993) Land Use Policy.

----. (1982) Public Use Plan 1982.

----. (1987) Recreation Action Plan: Supplement to the 1982 Public Use Plan June, 1987.

----. (1992) Recreation Action Plan 1992 Update: Supplement to the 1982 Public Use Plan.

----. (1997) Recreation Action Plan 1997 Update: supplement to the 1982 Public Use Plan.

Washington Department of Fish and Wildlife. (1997) State of Washington Wild Salmonid Policy Draft Environmental Impact Statement Recommended Alternative Justification Statement.

Washington Department of Wildlife, Wildlife Management, Fish Management, and Habitat Management Divisions. (1991) Management Recommendations for Washington's Priority Habitats and Species.

Washington State Parks and Recreation Commission. (1988) Chief Joseph State Park Master Plan.

Washington State Parks and Recreation Commission, Washington Department of Wildlife, and Public Utility District No. 1 of Douglas County. (1991) Memorandum of Understanding Concerning Chief Joseph State Park and the Wells Habitat Management Area.

APPENDICES

**COLUMBIA COVE PARK
RIVERFRONT TRAIL**

(NO METAL BEACH TABLES
FURNISHED TRASH CONTAINERS IN CONC. PAVES
OF RIVERFRONT TRAIL
IMPROVED PROTECTION WOOD BARRIER
CONCRETE TRAIL AND STAIRS TO
GRAVEL PATHWAYS

**MEMORIAL PARK
SEE PLAN A1**

ADA ACCESSIBLE SEQUENTIAL
ELECTRICAL UPDATES FOR VIBRONS AND KITCHEN PAVILION
PLAYGROUND WITH FALL PROTECTION
METAL BARRIER TRASH CONTAINERS ON CONCRETE PAVES
METAL PARK TABLES

**PENINSULA PARK
(SEE PLAN A1) BOAT LAUNCH
AND TENNIS COURTS**

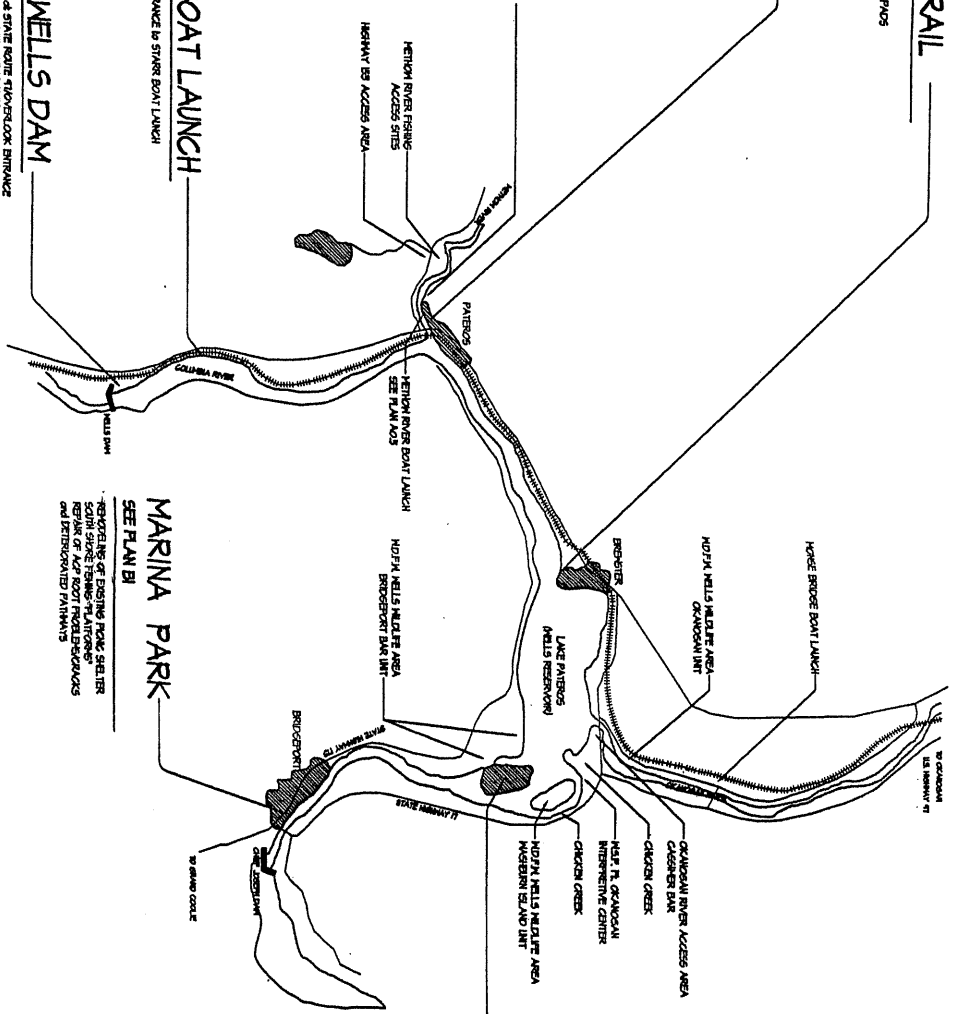
IMPROVED PROTECTION
REINFORCE LANSOLATING
REINFORCE FENCE TRAILER
WOOD BARRIER AND GRAVEL COVER

STARR BOAT LAUNCH

STATE ROUTE 110 ENTRANCE TO STARR BOAT LAUNCH
RECELEBRATION LANE
RIGHT TURN LANES

WELLS DAM

STATE ROUTE 110 OVERLOOK ENTRANCE
RIGHT TURN LANES
RIGHT TURN LANES



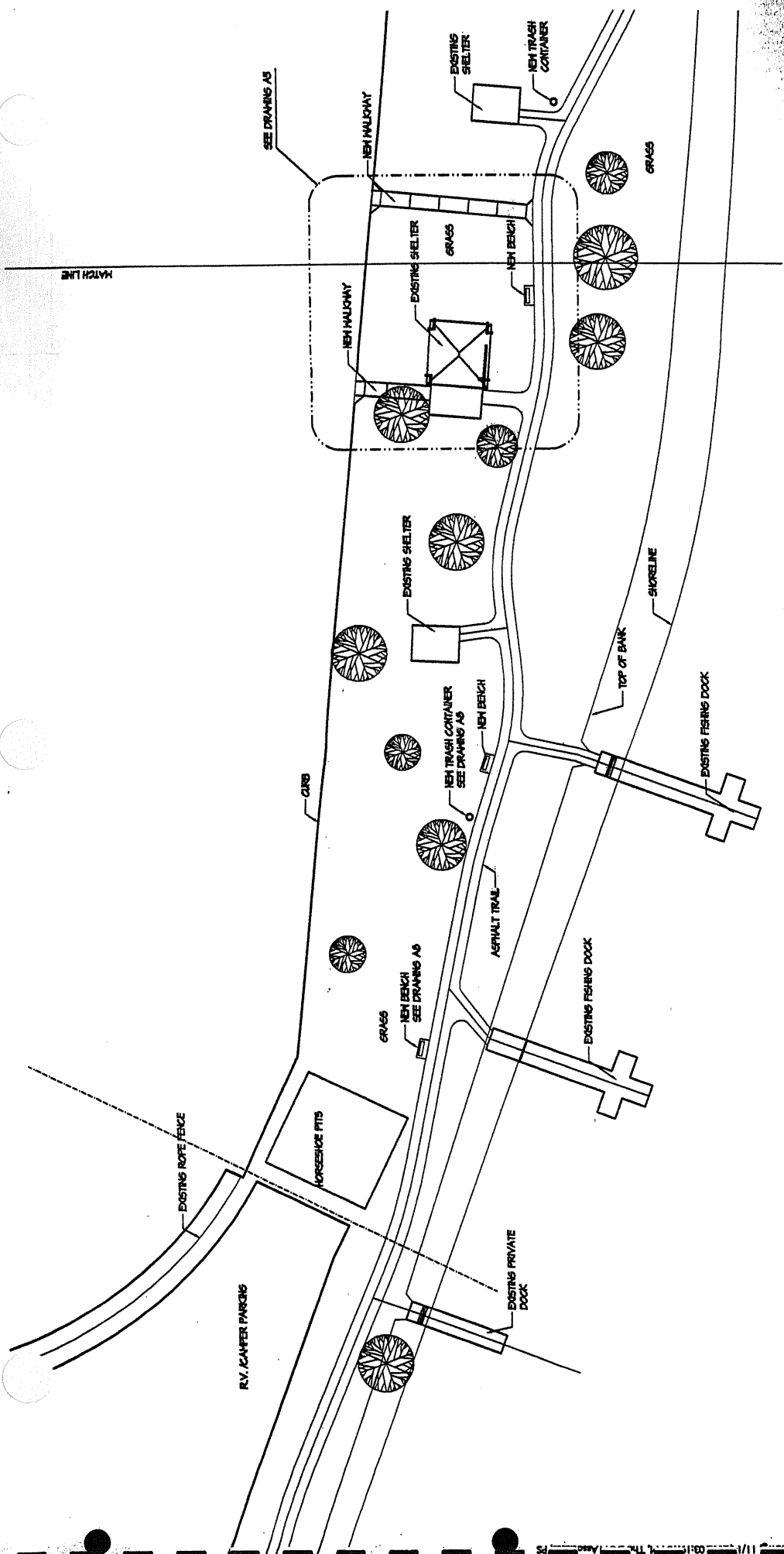
**MARINA PARK
SEE PLAN B1**

REVEALING OF EXISTING POND SHELTER
SOUTH SIDE FISHING PLANTINGS
REPAIR OF METAL ROVER ESCALATORS
AND DESIGNATED PATHWAYS

M.S.P. CHIEF JOSEPH ST. PARK
125000 SUPPORT ANNUALLY



FIGURE No. 5
SCALE : N.T.S.



MATCH LINE

SEE DRAWING A5

NEW HALLOWAY

EXISTING SHELTER

GRASS

NEW BENCH

NEW TRASH CONTAINER

GRASS

GRASS

CURB

EXISTING SHELTER

NEW TRASH CONTAINER
SEE DRAWING A5

NEW BENCH

TOP OF BANK

SHORELINE

EXISTING FISHING DOCK

ASPHALT TRAIL

EXISTING FISHING DOCK

GRASS

NEW BENCH
SEE DRAWING A5

EXISTING ROTARY FENCE

RV/CAMPER PARKING

ORSEANCE PITS

EXISTING PRIVATE DOCK

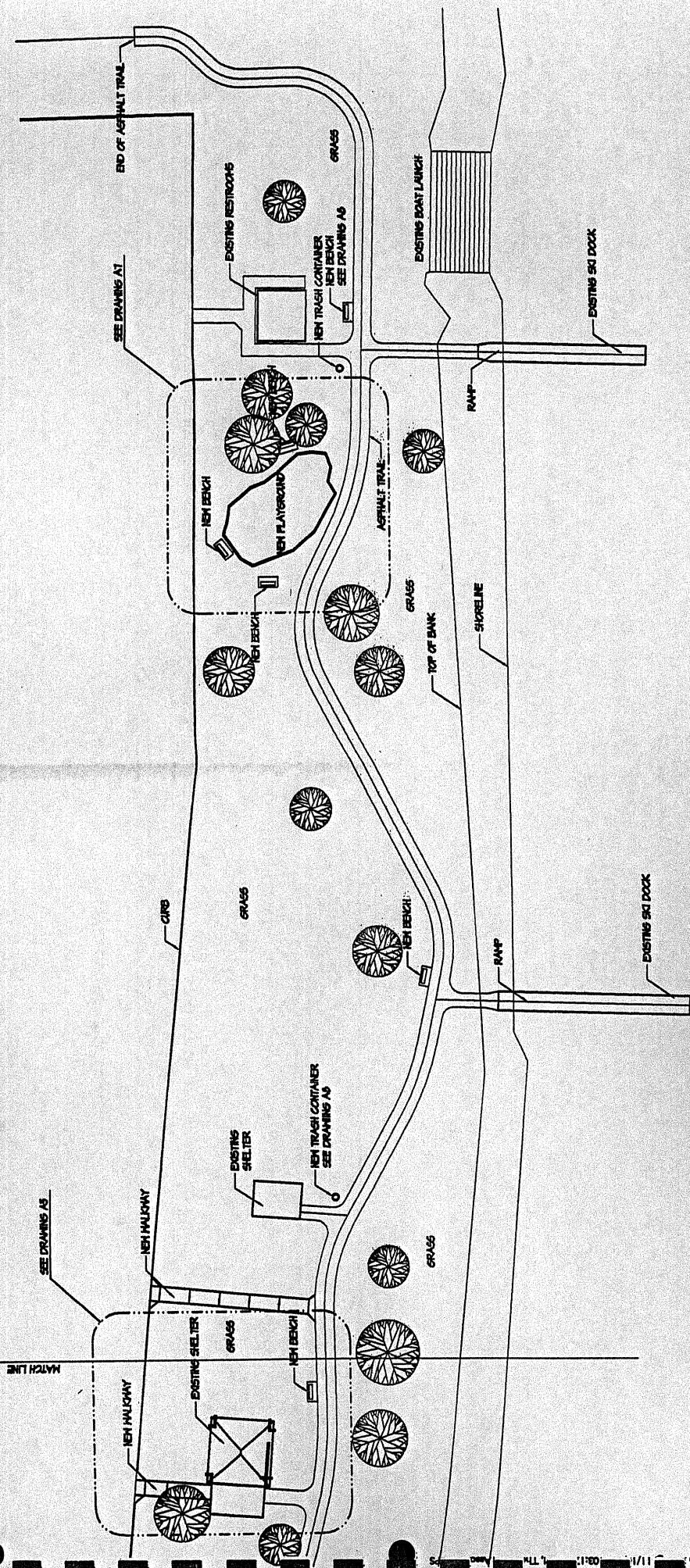
Partial Site Plan

PATEROS MEMORIAL PARK

PUD No. 1 of DOUGLAS COUNTY


The DOH Associates, PS
 ARCHITECTS and PLANNERS
 DOH JOB NO. 1200V
 DATE: 11-14-02





Partial Site Plan
PATEROS MEMORIAL PARK
 PUD No. 1 of DOUGLAS COUNTY



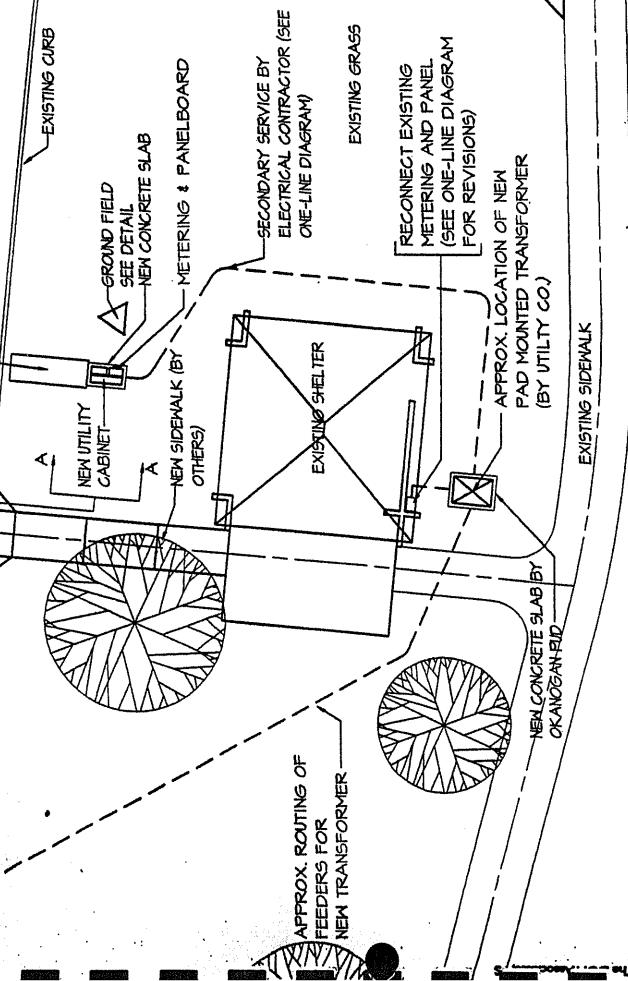

The DOH Associates, PS
ARCHITECTS and PLANNERS
 DCH Job No.: 0204
 Date: 11-14-02
 A Professional Service Corporation

A3

GENERAL NOTES:

- 1. ELECTRICAL CONTRACTOR SHALL VERIFY THAT ALL EXISTING CONVENIENCE OUTLETS ARE GFI TYPE (REPLACE EXISTING TO COMPLY AS NEEDED) FOR MAIN SHELTER AND 2 ADJACENT SHELTERS.

NEW SECONDARY SERVICE, METERING AND PANEL BOARD ONE-LINE DIAGRAM AND ELEVATION



SITE PLAN

SCALE: 1/16" = 1'-0"

AWA Electrical Consultants, Inc.
1115 S. 1st St.
Spokane, WA 99201
Phone: 509-325-7179 Fax: 509-325-7180

The DOH Associates, PS
ARCHITECTS and PLANNERS
DOH Job No.: 0204
Date: 11-14-02

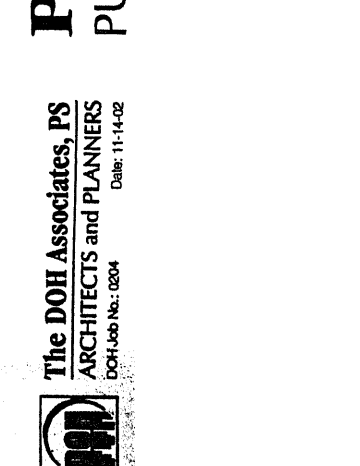
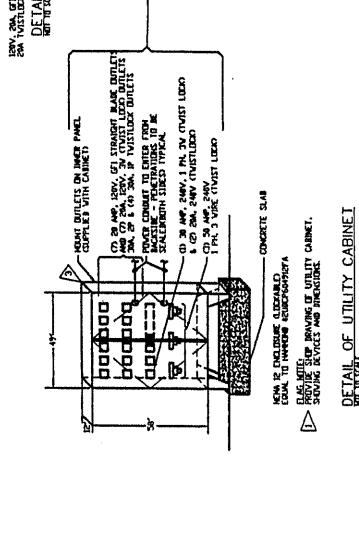
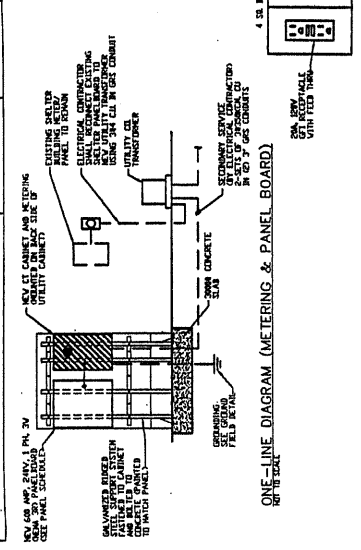


PATEROS MEMORIAL PARK
PUD No. 1 of DOUGLAS COUNTY

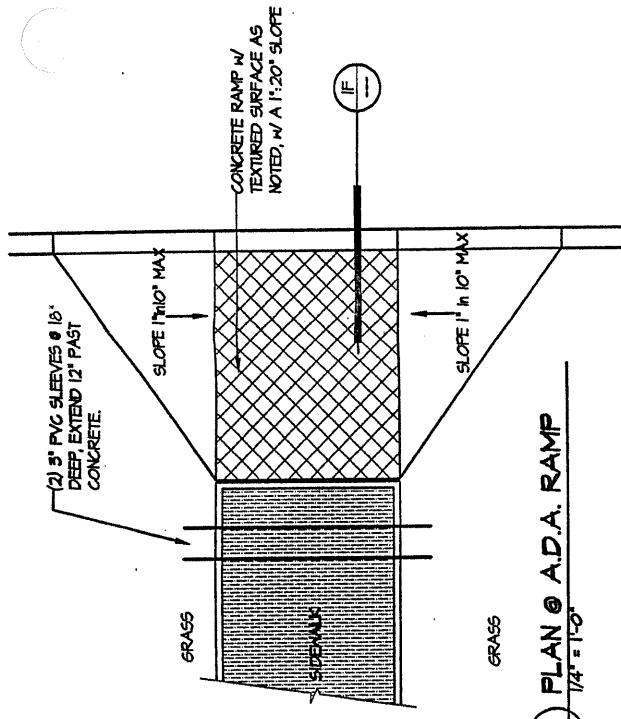
PANEL SCHEDULE

LOCATION: 10/20/02 VILAS 1 PHASE 3 WIRE
SERVING: 600 AMP 480 VOLT MAIN SERVICE BUS

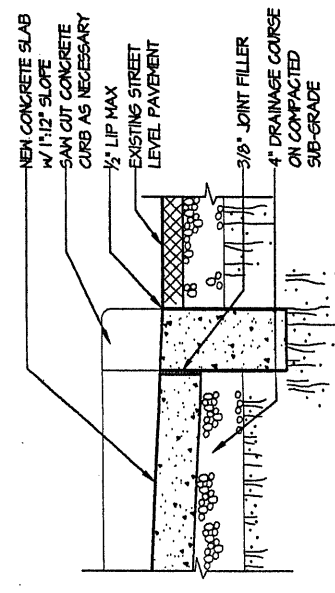
NO.	LOAD DESCRIPTION	KVA	TRIP	LOAD DESCRIPTION	KVA	TRIP	DEMAND
1	120V OUTLET (500)	1500	20	2800 120V OUTLET (500)	30	30	70.8
2	120V OUTLET (500)	1500	20	2800 120V OUTLET (500)	30	30	100%
3	120V OUTLET (500)	1500	20	2800 120V OUTLET (500)	30	30	70.8
4	120V OUTLET (500)	1500	20	2800 120V OUTLET (500)	30	30	70.8
5	120V OUTLET (500)	1500	20	2800 120V OUTLET (500)	30	30	70.8
6	120V OUTLET (500)	1500	20	2800 120V OUTLET (500)	30	30	70.8
7	120V OUTLET (500)	1500	20	2800 120V OUTLET (500)	30	30	70.8
8	120V OUTLET (500)	1500	20	2800 120V OUTLET (500)	30	30	70.8
9	120V OUTLET (500)	1500	20	2800 120V OUTLET (500)	30	30	70.8
10	120V OUTLET (500)	1500	20	2800 120V OUTLET (500)	30	30	70.8
11	120V OUTLET (500)	1500	20	2800 120V OUTLET (500)	30	30	70.8
12	120V OUTLET (500)	1500	20	2800 120V OUTLET (500)	30	30	70.8
13	120V OUTLET (500)	1500	20	2800 120V OUTLET (500)	30	30	70.8
14	120V OUTLET (500)	1500	20	2800 120V OUTLET (500)	30	30	70.8
15	120V OUTLET (500)	1500	20	2800 120V OUTLET (500)	30	30	70.8
16	120V OUTLET (500)	1500	20	2800 120V OUTLET (500)	30	30	70.8
17	120V OUTLET (500)	1500	20	2800 120V OUTLET (500)	30	30	70.8
18	120V OUTLET (500)	1500	20	2800 120V OUTLET (500)	30	30	70.8
19	120V OUTLET (500)	1500	20	2800 120V OUTLET (500)	30	30	70.8
20	120V OUTLET (500)	1500	20	2800 120V OUTLET (500)	30	30	70.8
21	120V OUTLET (500)	1500	20	2800 120V OUTLET (500)	30	30	70.8
22	120V OUTLET (500)	1500	20	2800 120V OUTLET (500)	30	30	70.8
23	120V OUTLET (500)	1500	20	2800 120V OUTLET (500)	30	30	70.8
24	120V OUTLET (500)	1500	20	2800 120V OUTLET (500)	30	30	70.8
25	120V OUTLET (500)	1500	20	2800 120V OUTLET (500)	30	30	70.8
26	120V OUTLET (500)	1500	20	2800 120V OUTLET (500)	30	30	70.8
27	120V OUTLET (500)	1500	20	2800 120V OUTLET (500)	30	30	70.8
28	120V OUTLET (500)	1500	20	2800 120V OUTLET (500)	30	30	70.8
29	120V OUTLET (500)	1500	20	2800 120V OUTLET (500)	30	30	70.8
30	120V OUTLET (500)	1500	20	2800 120V OUTLET (500)	30	30	70.8
31	120V OUTLET (500)	1500	20	2800 120V OUTLET (500)	30	30	70.8
32	120V OUTLET (500)	1500	20	2800 120V OUTLET (500)	30	30	70.8
33	120V OUTLET (500)	1500	20	2800 120V OUTLET (500)	30	30	70.8
34	120V OUTLET (500)	1500	20	2800 120V OUTLET (500)	30	30	70.8
35	120V OUTLET (500)	1500	20	2800 120V OUTLET (500)	30	30	70.8
36	120V OUTLET (500)	1500	20	2800 120V OUTLET (500)	30	30	70.8
37	120V OUTLET (500)	1500	20	2800 120V OUTLET (500)	30	30	70.8
38	120V OUTLET (500)	1500	20	2800 120V OUTLET (500)	30	30	70.8
39	120V OUTLET (500)	1500	20	2800 120V OUTLET (500)	30	30	70.8
40	120V OUTLET (500)	1500	20	2800 120V OUTLET (500)	30	30	70.8
41	120V OUTLET (500)	1500	20	2800 120V OUTLET (500)	30	30	70.8
42	120V OUTLET (500)	1500	20	2800 120V OUTLET (500)	30	30	70.8
43	120V OUTLET (500)	1500	20	2800 120V OUTLET (500)	30	30	70.8
44	120V OUTLET (500)	1500	20	2800 120V OUTLET (500)	30	30	70.8
45	120V OUTLET (500)	1500	20	2800 120V OUTLET (500)	30	30	70.8
46	120V OUTLET (500)	1500	20	2800 120V OUTLET (500)	30	30	70.8
47	120V OUTLET (500)	1500	20	2800 120V OUTLET (500)	30	30	70.8
48	120V OUTLET (500)	1500	20	2800 120V OUTLET (500)	30	30	70.8
49	120V OUTLET (500)	1500	20	2800 120V OUTLET (500)	30	30	70.8
50	120V OUTLET (500)	1500	20	2800 120V OUTLET (500)	30	30	70.8
51	120V OUTLET (500)	1500	20	2800 120V OUTLET (500)	30	30	70.8
52	120V OUTLET (500)	1500	20	2800 120V OUTLET (500)	30	30	70.8
53	120V OUTLET (500)	1500	20	2800 120V OUTLET (500)	30	30	70.8
54	120V OUTLET (500)	1500	20	2800 120V OUTLET (500)	30	30	70.8
55	120V OUTLET (500)	1500	20	2800 120V OUTLET (500)	30	30	70.8
56	120V OUTLET (500)	1500	20	2800 120V OUTLET (500)	30	30	70.8
57	120V OUTLET (500)	1500	20	2800 120V OUTLET (500)	30	30	70.8
58	120V OUTLET (500)	1500	20	2800 120V OUTLET (500)	30	30	70.8
59	120V OUTLET (500)	1500	20	2800 120V OUTLET (500)	30	30	70.8
60	120V OUTLET (500)	1500	20	2800 120V OUTLET (500)	30	30	70.8
61	120V OUTLET (500)	1500	20	2800 120V OUTLET (500)	30	30	70.8
62	120V OUTLET (500)	1500	20	2800 120V OUTLET (500)	30	30	70.8
63	120V OUTLET (500)	1500	20	2800 120V OUTLET (500)	30	30	70.8
64	120V OUTLET (500)	1500	20	2800 120V OUTLET (500)	30	30	70.8
65	120V OUTLET (500)	1500	20	2800 120V OUTLET (500)	30	30	70.8
66	120V OUTLET (500)	1500	20	2800 120V OUTLET (500)	30	30	70.8
67	120V OUTLET (500)	1500	20	2800 120V OUTLET (500)	30	30	70.8
68	120V OUTLET (500)	1500	20	2800 120V OUTLET (500)	30	30	70.8
69	120V OUTLET (500)	1500	20	2800 120V OUTLET (500)	30	30	70.8
70	120V OUTLET (500)	1500	20	2800 120V OUTLET (500)	30	30	70.8
71	120V OUTLET (500)	1500	20	2800 120V OUTLET (500)	30	30	70.8
72	120V OUTLET (500)	1500	20	2800 120V OUTLET (500)	30	30	70.8
73	120V OUTLET (500)	1500	20	2800 120V OUTLET (500)	30	30	70.8
74	120V OUTLET (500)	1500	20	2800 120V OUTLET (500)	30	30	70.8
75	120V OUTLET (500)	1500	20	2800 120V OUTLET (500)	30	30	70.8
76	120V OUTLET (500)	1500	20	2800 120V OUTLET (500)	30	30	70.8
77	120V OUTLET (500)	1500	20	2800 120V OUTLET (500)	30	30	70.8
78	120V OUTLET (500)	1500	20	2800 120V OUTLET (500)	30	30	70.8
79	120V OUTLET (500)	1500	20	2800 120V OUTLET (500)	30	30	70.8
80	120V OUTLET (500)	1500	20	2800 120V OUTLET (500)	30	30	70.8
81	120V OUTLET (500)	1500	20	2800 120V OUTLET (500)	30	30	70.8
82	120V OUTLET (500)	1500	20	2800 120V OUTLET (500)	30	30	70.8
83	120V OUTLET (500)	1500	20	2800 120V OUTLET (500)	30	30	70.8
84	120V OUTLET (500)	1500	20	2800 120V OUTLET (500)	30	30	70.8
85	120V OUTLET (500)	1500	20	2800 120V OUTLET (500)	30	30	70.8
86	120V OUTLET (500)	1500	20	2800 120V OUTLET (500)	30	30	70.8
87	120V OUTLET (500)	1500	20	2800 120V OUTLET (500)	30	30	70.8
88	120V OUTLET (500)	1500	20	2800 120V OUTLET (500)	30	30	70.8
89	120V OUTLET (500)	1500	20	2800 120V OUTLET (500)	30	30	70.8
90	120V OUTLET (500)	1500	20	2800 120V OUTLET (500)	30	30	70.8
91	120V OUTLET (500)	1500	20	2800 120V OUTLET (500)	30	30	70.8
92	120V OUTLET (500)	1500	20	2800 120V OUTLET (500)	30	30	70.8
93	120V OUTLET (500)	1500	20	2800 120V OUTLET (500)	30	30	70.8
94	120V OUTLET (500)	1500	20	2800 120V OUTLET (500)	30	30	70.8
95	120V OUTLET (500)	1500	20	2800 120V OUTLET (500)	30	30	70.8
96	120V OUTLET (500)	1500	20	2800 120V OUTLET (500)	30	30	70.8
97	120V OUTLET (500)	1500	20	2800 120V OUTLET (500)	30	30	70.8
98	120V OUTLET (500)	1500	20	2800 120V OUTLET (500)	30	30	70.8
99	120V OUTLET (500)	1500	20	2800 120V OUTLET (500)	30	30	70.8
100	120V OUTLET (500)	1500	20	2800 120V OUTLET (500)	30	30	70.8



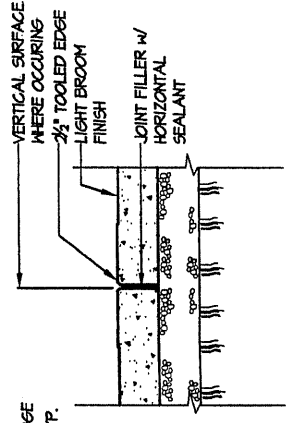
CONTRACTOR SHALL VERIFY THAT ALL EXISTING CONVENIENCE OUTLETS ARE GFI TYPE (REPLACE EXISTING TO COMPLY AS NEEDED) FOR MAIN SHELTER AND 2 ADJACENT SHELTERS.



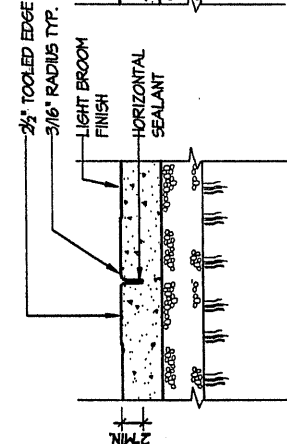
(1B) PLAN @ A.D.A. RAMP
1/4" = 1'-0"



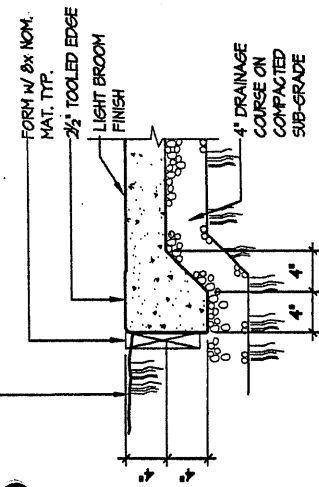
(1F) PAVEMENT CURB & RAMP
1" = 1'-0"



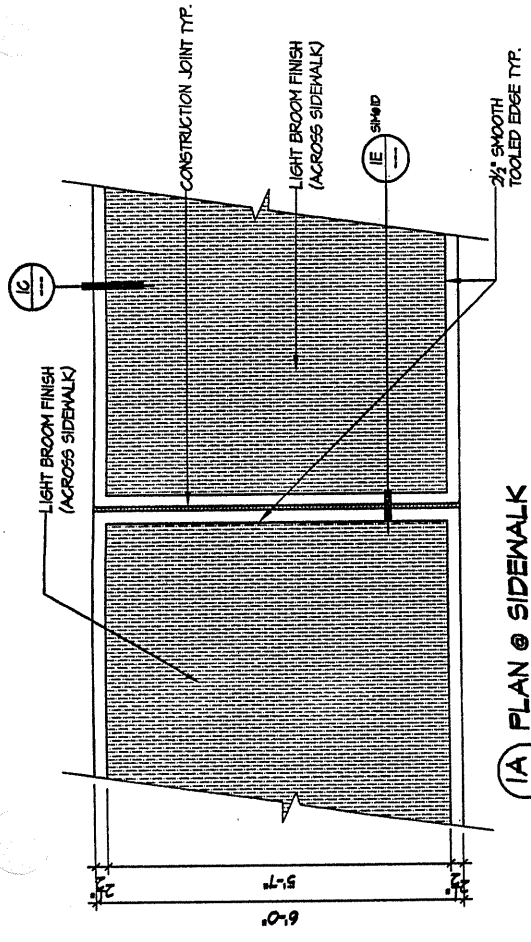
(1E) CONSTRUCTION JOINT
1" = 1'-0"



(1D) CONTROL JOINT
1" = 1'-0"



(1C) CONCRETE EDGE
1" = 1'-0"



(1A) PLAN @ SIDEWALK
1/2" = 1'-0"

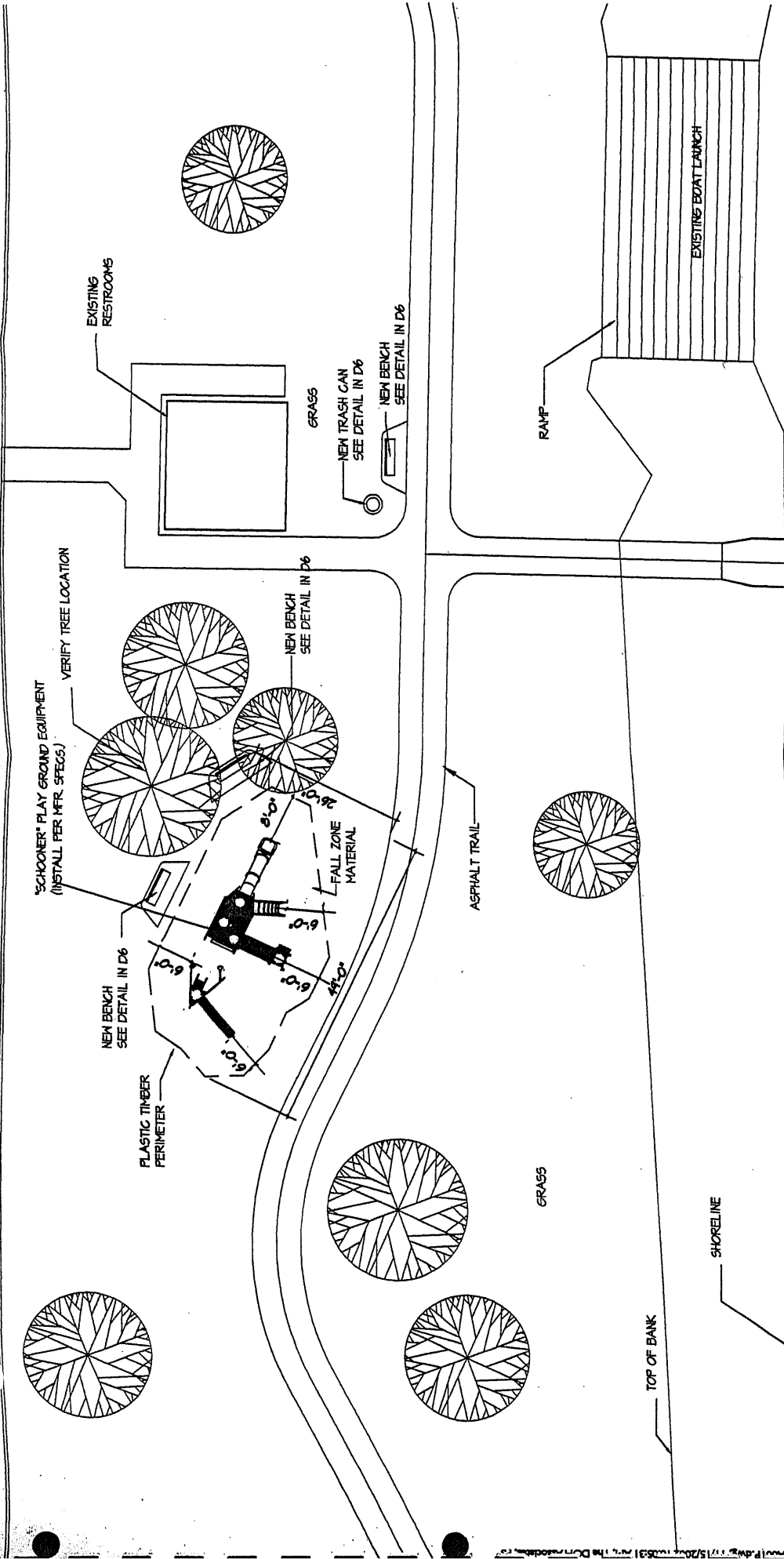
CONCRETE DETAILS FOR SIDEWALK

PATEROS MEMORIAL PARK
PUD No. 1 of DOUGLAS COUNTY

A6

The DOH Associates, PS
ARCHITECTS and PLANNERS
DOH Job No.: 0204
Date: 11-14-02





PLAYGROUND SITE PLAN

SCALE: 1/16" = 1'-0"

**Partial Site Plan
PATEROS MEMORIAL PARK**

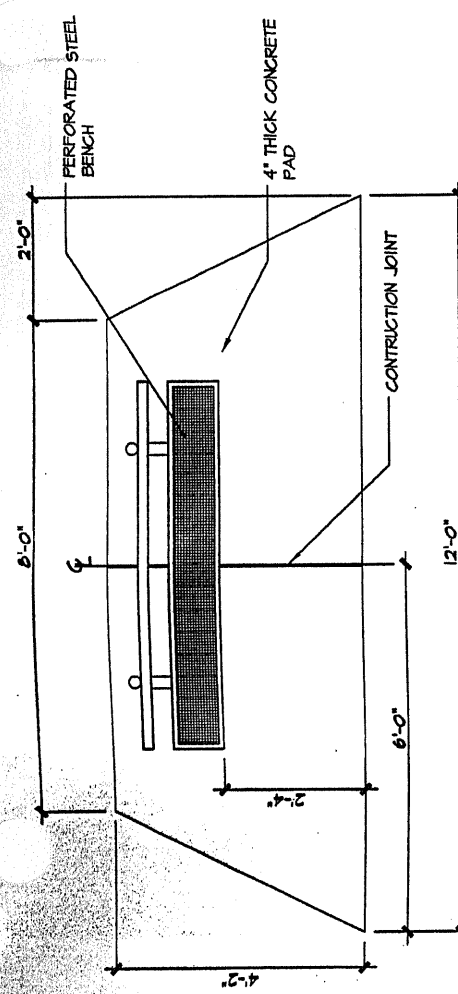
PUD No. 1 of DOUGLAS COUNTY

The DOH Associates, PS
ARCHITECTS and PLANNERS
DOH 666 No.: 0204

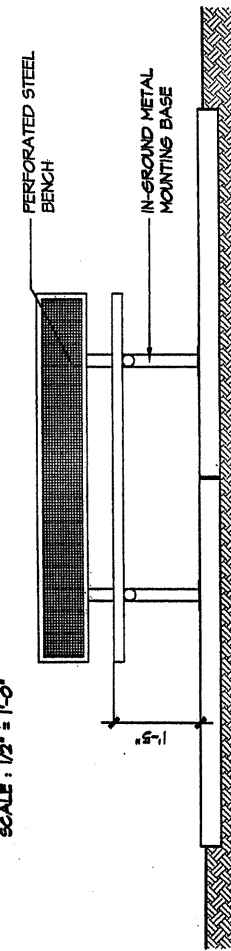
Date: 11-14-02



A7



BENCH FLOOR PLAN
SCALE: 1/2" = 1'-0"

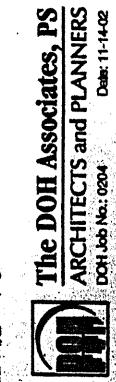


BENCH ELEVATION
SCALE: 1/2" = 1'-0"

NOTE:
INSTALL ALL EQUIPMENT
PER MANUFACTURERS
SPECIFICATIONS

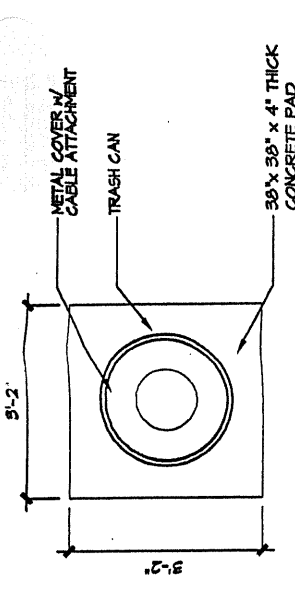
IN-GROUND MOUNTING DETAIL
SCALE: 1/2" = 1'-0"

The DOH Associates, PS
ARCHITECTS and PLANNERS
DOH Job No.: 0204
Date: 11-14-02

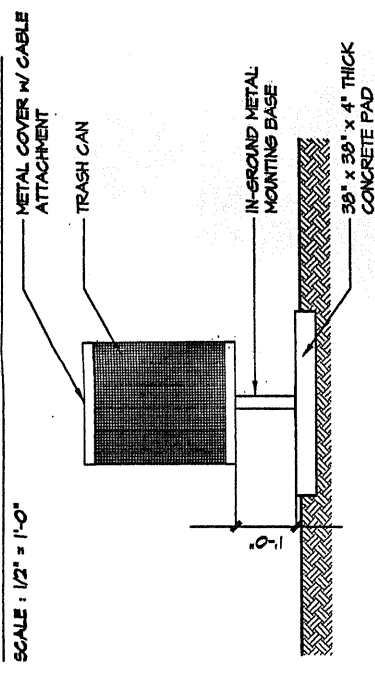


PATEROS MEMORIAL PARK
PUD No. 1 of DOUGLAS COUNTY

A8

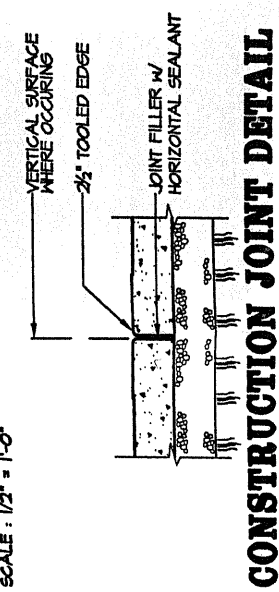


TRASH CONTAINER FLOOR PLAN
SCALE: 1/2" = 1'-0"



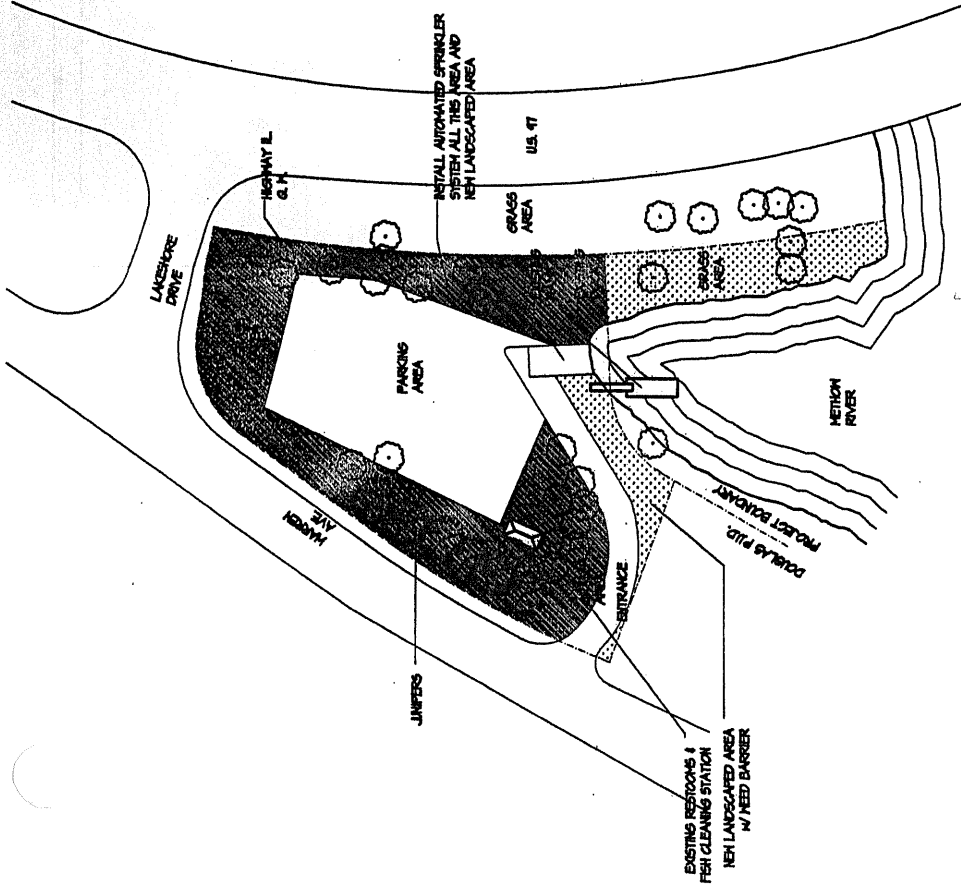
TRASH CONTAINER ELEVATION
SCALE: 1/2" = 1'-0"

SCALE: 1/2" = 1'-0"



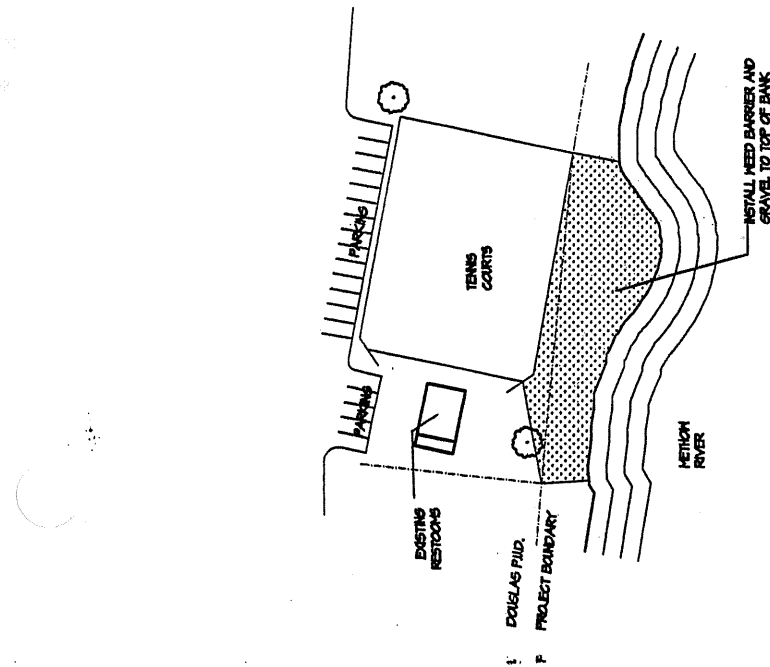
CONSTRUCTION JOINT DETAIL
SCALE: 1" = 1'-0"

SCALE: 1" = 1'-0"



METHOW RIVER BOAT LAUNCH

SCALE: N.T.S.



METHOW RIVER TENNIS COURTS

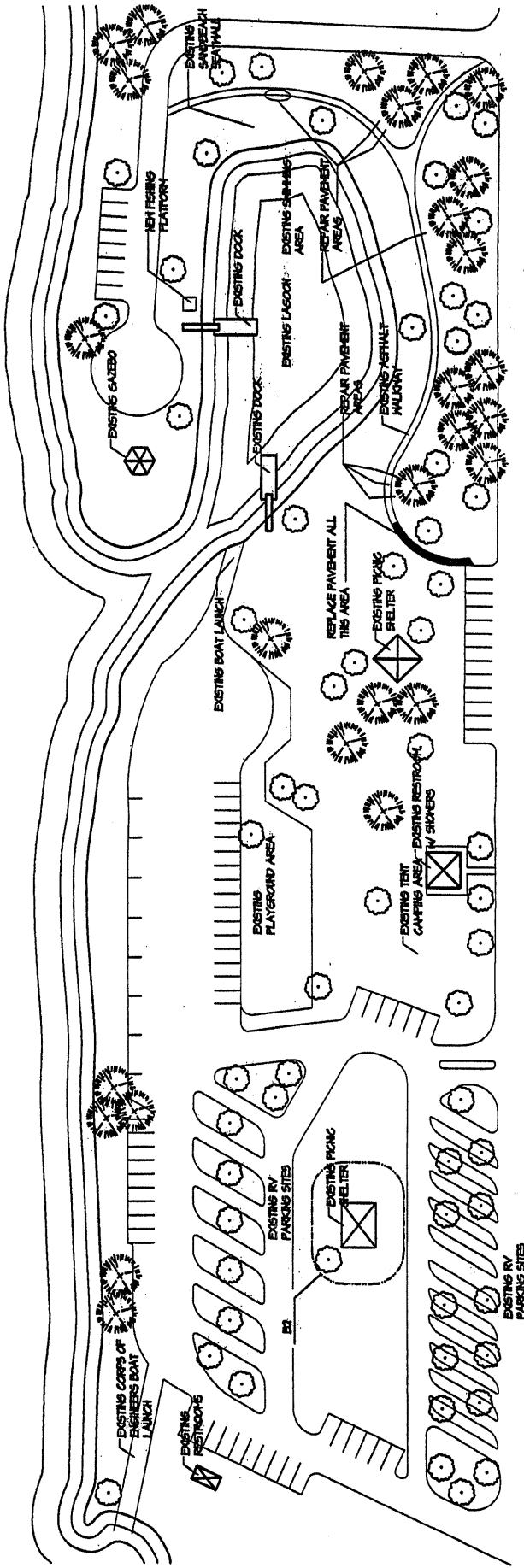
SCALE: N.T.S.

**Partial Site Plan(s)
PATEROS METHOW PARKS
PUD No. 1 of DOUGLAS COUNTY**

The DOH Associates, PS
ARCHITECTS and PLANNERS
DOH Job No.: 0204
Date: 11-14-02



A9



SITE PLAN

SCALE: N.T.S.



B1

Partial Site Plan

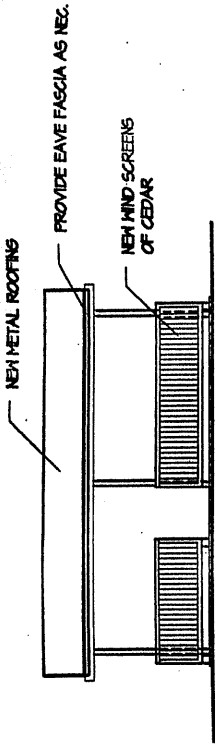
MARINA PARK

PUD No. 1 of DOUGLAS COUNTY

The DOH Associates, PS
 ARCHITECTS and PLANNERS
 DOH Job No.: 0204

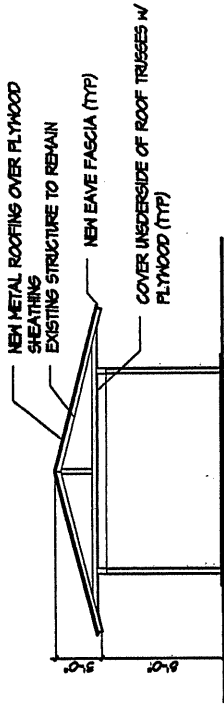
Date: 11-14-02





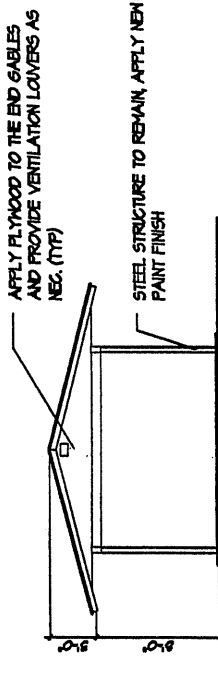
PICNIC SHELTER SIDE ELEVATION

SCALE: 1/4" = 1'-0"



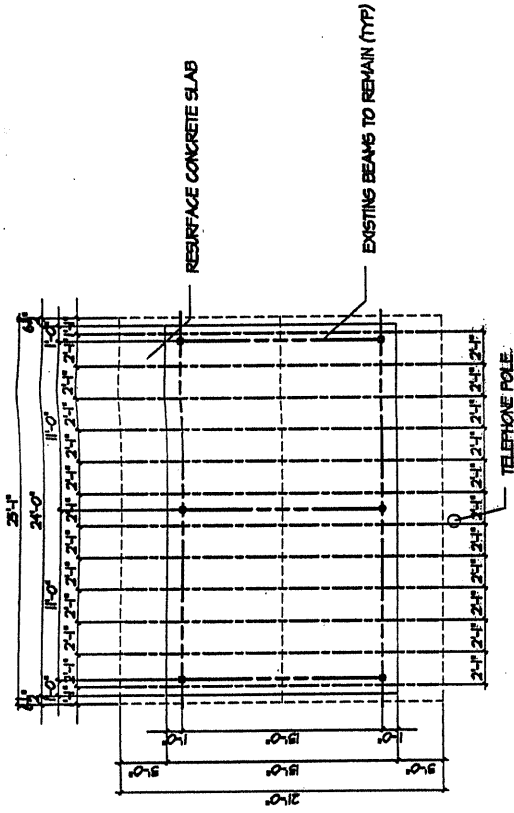
PICNIC SHELTER CROSS SECTION

SCALE: 1/4" = 1'-0"



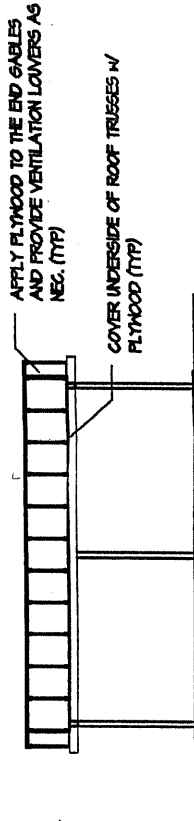
PICNIC SHELTER FRONT ELEVATION

SCALE: 1/4" = 1'-0"



PICNIC SHELTER FLOOR PLAN

SCALE: 1/4" = 1'-0"



PICNIC SHELTER CROSS SECTION

SCALE: 1/4" = 1'-0"

MARINA PARK

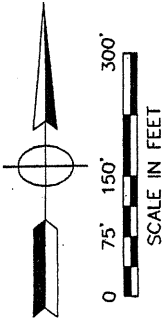
PUD No. 1 of DOUGLAS COUNTY

The DOH Associates, PS
 ARCHITECTS and PLANNERS
 DOH Job No.: 0204



Date: 11-14-02

B2



BOTTOM OF ROCK SLOPE

HOMES

STATE ROUTE 97

GRASS AND LANDSCAPING

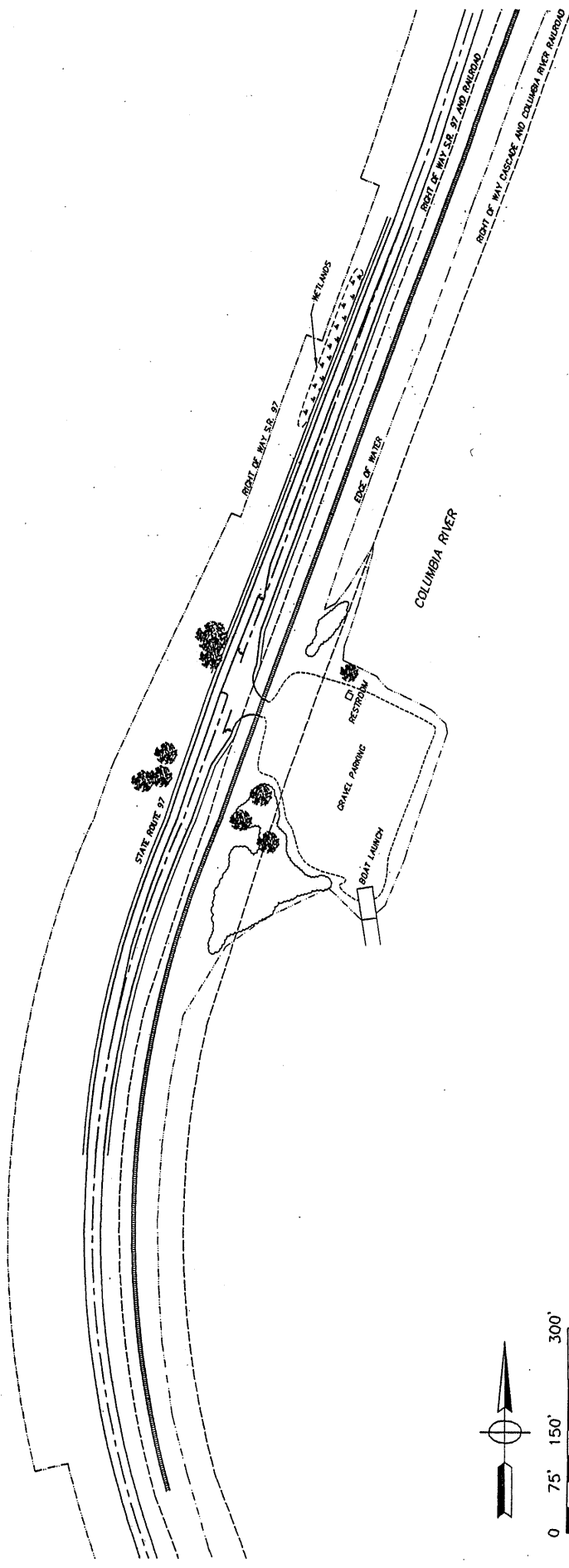
TOP OF SLOPE

REST AREA

GRASS AND LANDSCAPING

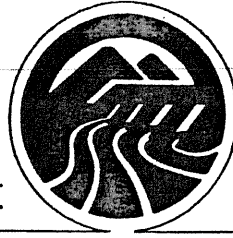
CHELAN COUNTY ROAD No. 375

DOUGLAS COUNTY P.U.D. NO.1
INTERSECTION AT WELLS DAM
SR 97 - M.P. 246.20
EXHIBIT



DOUGLAS COUNTY P.U.D. NO.1
 STAR BOAT LAUNCH - SR 97. M.P. 248.82
 EXHIBIT

APPENDIX A
LETTER OF INVITATION TO AGENCY MEETINGS
AND DISTRIBUTION LIST



Public Utility District No. 1 of Douglas County

1151 Valley Mall Parkway • East Wenatchee, Washington 98802-4497 • 509/884-7191 • FAX 509/884-0553

March 18, 2002

Mr. Jim Harris
State parks and Recreation Commission
2201 N. Duncan Drive
Wenatchee WA 98801

COPY

Re: Douglas County PUD
Recreation Action Plan Update

Dear Jim:

Public Utility District No. 1 of Douglas County (District) is beginning a six-month effort to update the Recreation Action Plan for the Wells Hydroelectric Project. In 1982, in conjunction with a license amendment for the Wells Project, a Public Use Plan was developed to address recreation in the Wells Project area. The National Park Service (NPS) suggested and the Federal Regulatory Commission (FERC) agreed that this Plan should be updated every five-years to reflect the changes in recreation demand in the Wells Project area. The District conducted updates in 1987, 1992, and 1997, and is initiating the 2002 Update. As with previous updates, the District will solicit agency input in preparing the 2002 Update. Upon completion, the 2002 Update will be submitted to FERC for review and approval.

This update will:

- a) assess the level of reservoir and recreation facility use in the immediate Wells Project area (Lake Pateros, the lower 1.5 miles of the Methow River and approximately 17 miles up the Okanogan River);
- b) assess the regional demand for water-based recreation opportunities and facilities;
- c) balance demand for recreation access and facilities with natural resource needs in the Wells Project area.

You and other local, state, federal, and Tribal agency representatives can provide valuable information to this recreation planning process. This information may include:

- a) recreational use estimates for the Wells Project area and nearby recreation facilities;
- b) existing recreation projections, plans, and policy statements;
- c) suggestions for access and facility improvement, or new facility development.

The District has scheduled the initial kickoff meeting at 9:00 a.m. on Tuesday, April 16, 2002, at the District's East Wenatchee Headquarters, 1151 Valley Mall Parkway, East Wenatchee, Washington. Please bring any information you believe will be beneficial to this planning effort. Your participation will help assure the recreation needs of the Wells Project area are adequately addressed.

If you have any questions, I may be reached at 509-881-2242 or by email at gbrett@dcpud.org.

Sincerely,

COPY
Gordon Brett
Property Supervisor

encl. Agency mailing list

c: Robert Clubb, Ph.D.
David Schott, DOH Associates

Agency Contact List, Revised 3/18/02

<p>Ms. Gail Howe, Mayor City of Pateros P.O. Box 8 Pateros, WA 98846 (509) 923-2571</p>	<p>Ms. Bonnie House, Mayor City of Brewster P.O. Box 340 Brewster, WA 98812 (509) 689-3464</p>
<p>Mr. Steve Jenkins, Mayor City of Bridgeport P.O. Box 640 Bridgeport, WA 98813 (509) 686-4041</p>	<p>Mr. Mark Kulaas, Land Services Director Transportation and Land Services 470 9th Street N.E. East Wenatchee, WA 98802 (509) 884-7173</p>
<p>Mr. Don Skillingstad Okanogan County Planning P.O. box 1009 Okanogan, WA 98840 (509) 422-7160</p>	<p>Bill Koss State Parks and Recreation Commission 7150 Cleanwater Lane P.O. Box 42650 Olympia, WA 98504-2650</p>
<p>Mr. L. D. Fairleigh State Parks and Recreation Commission 7150 Cleanwater Lane P.O. Box 42650 Olympia, WA 98504-2650 (360) 902-8642</p>	<p>Tracy Lloyd Regional Habitat Program Manager State Department of Fish and Wildlife 1550 Alder Street Ephrata, WA 98823 (509) 754-6023</p>
<p>Mr. Fred Suter Transportation Planning Washington Department of Transportation P.O. Box 98 Wenatchee, WA 98807 (509) 663-9631</p>	<p>Mr. Mike Palmer Director of Parks and Recreation Colville Confederated Tribes P.O. Box 150 Nespelem, WA 99155 (509) 634-4711</p>
<p>Ms. Susan Rosebrough National Park Service 909 1st Avenue Seattle, WA 98104</p>	<p>Mr. Jim Harris Washington State parks and Recreation Commission 2201 N. Duncan Drive Wenatchee WA 98801</p>
<p>Marybeth Clark, Planning Colville Confederated Tribes P.O. Box 150 Nespelem, WA 99155</p>	

Mr. Bill Fraser State Parks and Recreation Commission 2201 N. Duncan Drive Wenatchee WA 98801	Jim Eychaner Washington State Interagency Committee for Outdoor Recreation P.O. Box 40917 Olympia WA 98504-0917
Marc Hallet Department of Wildlife Wells Wildlife Area Route 1 Box 197B Brewster WA 98812	David Schott The DOH Associates 7. North Wenatchee Ave., Suite 500 Wenatchee WA 98801

***APPENDIX B
AGENCY MEETING SUMMARIES AND NOTES***

MEMO

Date: April 17, 2002

To: P.U.D. of Douglas County

From: Mayor Gail Howe

Re: Recreation Plan Update

The City of Pateros appreciates the opportunity to work with the Douglas County PUD to improve our city parks. This is a mutually beneficial arrangement we would like to continue.

During the past five years, we have compiled input received from citizens, Council, and committees for improvements to our parks. These improvements are listed in our order of importance, as follows:

1. Two handicap accesses at Memorial Park, near the kitchen, the first that connects to the kitchen and then to the walkway, and a second walkway that is directly in line with the southern most parking lot entrance (across from the grocery store), and connects directly to the pathway.
2. The electrical at the kitchen area is not constructed with safety in mind. During Apple Pie Jamboree and the Pateros Hydro Classic, vendors require electricity and extensions cords were the only means to provide them electricity. This created a safety concern with all the cords exposed to the general public. We would like 15 to 20 electrical services starting at the kitchen at Memorial Park and placed along the curbing. These connections need to be recessed so they do not interfere with mowing or snowplowing, and can be switched off when not in use. The whole electrical system at the kitchen area is exposed to the general public and is a safety concern to the city.
3. Playground equipment in Memorial Park. This would create a highly visible attraction for passing motorists with children to spend more time in our park. We suggest that the equipment be placed at the northeast end of the park near the restrooms and carry the theme of steamboats and riverboats.

4. The docks located along the Methow and Columbia require maintenance from the constant movement of water. Since the PUD owns these docks, we would appreciate their inspecting the docks periodically and replacing the pins/bolts that holds the docks in place. The other alternative would be for the City to do the repairs and be reimbursed by the PUD.
5. We would like to have benches installed in Memorial Park and the Boat Launch Park. In Memorial Park, we would like the benches placed one on each side at the entrances to the docks and on cement slabs for lower maintenance. At the Boat Launch, we would like the benches near the walkway and facing towards the water, also on cement slabs.
6. The City would like to replace the wooden picnic tables with aluminum tables in the kitchen and gazebos at Memorial Park. We would like a minimum of three handicapped eight foot tables and five regular aluminum eight foot tables.
7. We would like to have a permanent covered stage in Memorial Park. This stage should be located between the kitchen and the northern most gazebo and on the river side of the walkway. Size would be determined by the space available.
8. Maps at both ends of Memorial Park that list our parks, tennis court, boat launches, government buildings – i.e. post office, city hall, fire station, school, cemetery – and all residential streets. The maps would need to be weather proof and would be another place that the PUD could list their name as a provider.
9. We have discussed for several years the possibility of the PUD providing maintenance and operating funds for the parks and tennis courts.
10. An update of the 1987 agreement between the city and the PUD.
11. Our tennis courts receive a great amount of use and will require resurfacing by 2006.
12. The main boat launch needs a new sprinkler system and landscaping to enhance the boat launch, control erosion, eliminate noxious weeds and minimize maintenance.
13. The tennis courts require landscaping to control noxious weeds and minimize maintenance.
- ~~14.~~ Sidewalks along the full length of Memorial Park.

MEMORANDUM

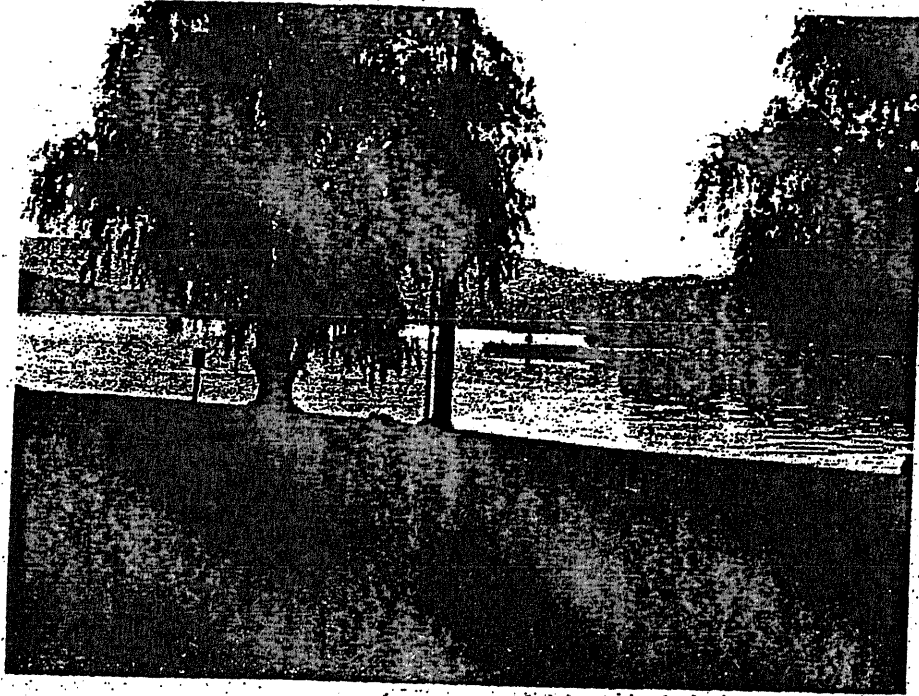
TO: File
FROM: Gordon Brett
DATE: July 10, 2002
SUBJECT: Recreation Action Plan Update

I met with Mike Shenyer to discuss the 2002 Update. Mike indicated Brewster would like the District to provide maintenance monies for facilities provided by the District through previous Recreation Plans.

Brewster would like to see additional RV camping and ball fields developed on the recently purchased Foyle property.

City of Brewster

DRAFT



Park and Recreation Plan

Adopted June 12, 2002

RECEIVED

JUN 03 2002

The DOW Associates

Brewster Park and Recreation Plan

Adopted: June 12, 2002

Brewster City Council

Mayor Bonnie House
Bob Fateley
Bob Dewey
Wayne Lehrman
David Freels
George Webster

This plan was prepared by Highlands Associates,
Circuit Rider Planners for the City of Brewster.

City Staff assistance provided by:

Jerald Aldridge, City Parks Manager
Mike Shenyer, Public Works Superintendent
Tina Wood, Administrative Staff

The NRPA has also established standards for individual athletic fields and similar improvements. Provided they are kept in good playing condition, Brewster is currently exceeding standards for improvements such as basketball courts, football fields, running tracks, baseball fields, volleyball, and other activities for which standards have been established. This may be attributed to Brewster's distance from more dense population centers. In metropolitan areas, residents in one community often use park areas and even programs offered in a neighboring municipality, decreasing or eliminating the need to provide duplicate facilities in both cities. To some degree, Brewster "shares" its facilities with Bridgeport, Pateros, and residents of the outlying area. Opportunities to expand cooperative efforts present potential cost efficiencies that should be explored in the future.

Even if the City gains 1000 people over the next 25 years, as forecasted by the 1995 City of Brewster Comprehensive Plan, the community will be able to maintain national standards without significantly adding acreage to the current park system. At issue is whether or not the quantity and quality of recreational experiences currently available meet the needs of Brewster area residents.

Public Participation

The *2001 Brewster Park and Recreation Plan* involved earnest effort to identify and include the input and suggestions of all Brewster area residents. Brewster is a culturally diverse community, with a large Hispanic population comprising nearly 60% of the city's residents. The City worked to ensure that the Park Plan represents the views and priorities of a diverse population.

In October of 2000, the City held a Public Workshop aimed at generating ideas and priorities for the park system. The meeting drew significant participation from the community, illustrating a deep commitment to park facilities and recreation opportunities. Input from the public workshop informed the development of a Community Survey that was distributed to the majority of households in Brewster. While response to both the workshop and survey were good, the Hispanic community appeared to be under represented. Therefore, an additional public meeting was called in March, 2002 with the hope of soliciting specific input from Hispanic residents. This meeting was publicized in Spanish as well as English.

Since this plan updates 1987 and 1996 Park Plans, the City was able to look at the trend of recreation needs established in the previous park planning efforts. Past surveys collected in-depth information about demographics and park and recreation

Table 5: Six Year Capital Improvement Program

Project	02	03	04	05	06	07	Est. Cost	Potential Funding Sources
Improve Riverfront Trail	X							PUD
Convert multi-use field to soccer fields		X	X				\$50,000	IAC, General Fund, Donations
Construct new restrooms		X	X				\$50,000	IAC, General Fund, Donations
Create activities director position		X					\$16,000	General fund, user fees
Pool upgrades - filtration system, new liner			X	X			\$50,000	IAC, General Fund, Donations
Racquet/handball courts				X			\$10,000	IAC, General Fund, Donations
Fitness Trail				X			\$20,000	PUD, IAC, Donations
Construct Bandstand					X		\$10,000	General Fund, Hotel/Motel Tax, REET, Donation
Add more RV spots					X		\$5,000	PUD, General Fund
Develop new park lands (additional soccer, baseball & softball fields)				X	X	X	\$500,000	PUD, IAC, General Fund, Donations, REET
Add lighting to ball fields						X	\$50,000	IAC, General Fund, Donations
Improve Youth Boxing Center/Weight Room	on-going						\$5,000	Donations, General Fund
Replace and/or add picnic tables where needed.	on-going						\$2,000	General Fund

MEMORANDUM

TO: File
FROM: Gordon Brett
DATE: July 10, 2002
SUBJECT: Recreation Action Plan Update

I met with Steve Jenkins, Mayor of Bridgeport, to discuss the 2002 Recreation Action Plan Update.

Mr. Jenkins stated his appreciation for the recreation opportunities the District has provided to date. In the 2002 Update, Bridgeport would like to see three improvements to Marina Park. First Bridgeport would like replacement of the picnic shelter in the RV camping area. Secondly, Bridgeport would like the asphalt trail restored and the roots heaving addressed. The third item requested is a hardened surface path around the swimming lagoon. This path is to provide safe access to children participating in the annual fishing derby

APPENDIX C
DOUGLAS COUNTY PUD, STATE OF WASHINGTON
AND WASHINGTON STATE PARKS
INTERLOCAL AGREEMENT-CHIEF JOSEPH STATE PARK

NOTED
AUG 26 1987

F.W.L.

INTERLOCAL AGREEMENT
CHIEF JOSEPH STATE PARK

This agreement is entered into on the date last below written, by and between the State of Washington, Washington State Parks and Recreation Commission (hereinafter Parks) and Public Utility District No. 1 of Douglas County, Washington (hereinafter the District), for the purposes and under the terms and conditions stated below:

1. PURPOSE. The District operates the Wells Hydroelectric project and Wells Dam on the Columbia River, under license from the Federal Energy Regulatory Commission (FERC). Incident to an amendment of its license which would allow the District to raise the water level of the impoundment behind Wells Dam, FERC has required the District in consultation with the National Park Service of the U. S. Department of the Interior (N.P.S.), Parks and other interested federal, state, and local agencies, to conduct a study of the need, if any, for providing additional recreational facilities at Lake Pateros (Wells Dam, FERC Project No. 2149). The study, concurred in by N.P.S. and Parks, concluded that the facilities planned in 1967 were adequate but funding was required for Chief Joseph State Park (hereinafter the park). The park is located on the Wells Dam impoundment, off of Sign Route 173, approximately 14 miles upstream of the town of Pateros. This agreement is intended to provide for the transfer of funds from the District, to Parks, to be used for the development and implementation of a master plan and other necessary improvements, construction or work at the park.

2. TRANSFER OF FUNDS. On the date the District raises the Wells Dam pool elevation to 781 ft. MSL, or higher, the District shall transfer to Parks the sum of One Hundred Twenty Five Thousand Dollars (\$125,000). On the sixth (6th) anniversary date, so long as this agreement remains in effect, the District shall transfer to Parks the sum of Twenty Five Thousand Dollars (\$25,000).

3. DEPOSIT AND DISBURSEMENT OF FUNDS. The funds received from the District under this agreement shall be deposited by Parks in the ~~_____~~ _____ (the account), a local fund established outside of the state treasury, as authorized by the state office of Financial Management (OFM) pursuant to RCW 43.88.195. Funds shall be disbursed from the account subject to allotment by OFM, and in accordance with all applicable OFM rules and regulations, solely for the purpose of effectuating this agreement.

4. TERM OF AGREEMENT. This agreement will remain in effect until December 31, 2012, or until such time as the FERC authorized pool elevation behind Wells Dam is reduced below the level of 781 ft. MSL, whichever occurs first.

5. REFUND. In the event this agreement terminates prior to December 31, 2012, any funds remaining in the account which have not been allotted for disbursement, or otherwise obligated for expenditure, shall be refunded to the District, less the amount of any such remaining funds which Parks, in its sole discretion, determines to be necessary for expenditure for purposes of correcting or mitigating any adverse effects on the park or park facilities occasioned by the reduction in authorized pool elevation below 781 ft. MSL.

6. EXPENDITURE OF FUNDS. Funds transferred by the District to Parks under this agreement shall be used solely for the purposes herein provided, or refunded to the District in accordance with paragraph 5, above: PROVIDED, however, the intial sum of One Hundred Twenty Five Thousand Dollars (\$125,000) transferred hereunder, or so much thereof as may be required, shall be expended for the following:

- a. Adding or enlarging culverts under the causeway at the park, in order to increase water flow through the designated future swimming area, if deemed necessary by Parks;
- b. Planting trees in the park;
- c. Providing temporary irrigation for trees in the park;
- d. Preparing a master plan for the park, through the design

development phase, to include but not limited to a planting plan and temporary irrigation system design. Any and all planning, design, development, construction or other work at the park shall be as deemed necessary or desirable by Parks, in its sole discretion, and the funding for such planning, design, development, construction or other work at the park provided for under the terms of this agreement may be supplemented by Parks from any other available source of funds: PROVIDED, However, other than with respect to the funds provided by the District under this agreement, any expenditure of funds by Parks for any reason directly or indirectly necessitated by virtue of this agreement, including but not limited to capital projects or operating expenses shall be subject to legislative appropriation: PROVIDED FURTHER, Parks shall include in future budget requests the funding for staff and operating expenses which Parks deems necessary to operate the park.

7. OWNERSHIP OF IMPROVEMENTS. Any and all improvements to the park, or any other property the acquisition of which is financed in whole or in part under this agreement, shall become the property of Parks.

8. ADMINISTRATION OF AGREEMENT. This agreement shall be administered by the ~~Director, Washington State Parks and Recreation Commission,~~ and his designated assistant directors and staff, whose offices are located at ~~70 Cleanwater Lane, Olympia, Washington 98504.~~ All correspondence pertaining to this agreement, and the payment of funds pursuant to paragraph 2, above, shall be addressed to the Director accordingly, unless the District is notified to the contrary.

9. ACCOUNTING. Parks will provide the District an annual accounting during December of each year this agreement is in effect, of all funds expended from the account pursuant to this agreement during the preceding calendar year.

10. ENTIRE AGREEMENT; MODIFICATIONS. This document contains the entire and integrated agreement of the parties, and may not be modified or amended except in writing, signed by both parties.

IN WITNESS WHEREOF, the parties have hereunto set their respective hands on the dates so indicated below.

STATE OF WASHINGTON, WASHINGTON STATE
PARKS AND RECREATION COMMISSION (PARKS)

By *Jan Tveten*
JAN TVETEN, Director

Date August 24, 1983

PUBLIC UTILITY DISTRICT NO. 1
DOUGLAS COUNTY, WASHINGTON (the
District)

By *Howard Prey*
HOWARD PREY, President

Date August 29, 1983

And By *William E. Bechtol*
WILLIAM E. BECHTOL, Vice President

Date August 29, 1983

Attest *Michael Doneen*
MICHAEL DONEEN, Secretary

Date August 29, 1983

APPROVED AS TO FORM: .

KENNETH O. EIKENBERRY
Attorney General

Robert C. Hargreaves
ROBERT C. HARGREAVES
Assistant Attorney General

APPENDIX D
PUD NO. 1 OF DOUGLAS COUNTY LAND USE POLICY

**PUBLIC UTILITY DISTRICT NO.1 OF DOUGLAS COUNTY
LAND USE POLICY
July 15, 1993**

Public Utility District No.1 of Douglas County (District) owns and operates the Wells Hydroelectric Project which is authorized under the Federal Power Act by the Federal Energy Regulatory Commission's (FERC) License #2149, as amended. All lands within the Wells Project boundary are project lands and are governed by the FERC License. The District also owns or controls certain land rights above the Wells Project boundary which are exercised in connection with the Wells Hydroelectric Project. The District is organized and operates under Title 54 of the Revised Code of Washington. The District also owns land and land rights for its electrical and water transmission and distribution systems.

The following are general land use policies which address all District lands and land rights. The purpose of this policy is to provide guidance for land use management decisions and to:

1. maintain compliance with FERC License obligations for the Wells Project;
2. meet applicable federal and state requirements for non-project lands;
3. provide for good stewardship of both project and non-project lands;
4. provide for consideration of wildlife and/or riparian habitat;
5. provide for the continued operation of the transmission and distribution system;
6. provide for consideration of significant historical, cultural and natural features;
7. evaluate all existing uses of Project and Non-Project land and land rights;
8. comply with existing agreements;
9. develop a process by which a policy violation can be resolved.

GENERAL POLICIES

A. The use of Wells Project lands shall be governed by the Wells Project FERC License #2149. The District shall use its best efforts to comply with all applicable State and Federal laws and regulations.

B. A goal of the District is to address historic, cultural and archaeologically significant sites located on Project or District lands in coordination with appropriate agencies.

C. A goal of the District is to develop only those recreational facilities that will not interfere with the preservation of natural ecosystems associated with the Wells Project.

D. A goal of the District is to sustain the existing natural systems associated with the Wells Project or other District lands.

E. The public shall be allowed access, where practicable, to the waters of Wells Reservoir and adjacent Project lands owned by the District. Access shall be without regard to race, color, sex, religion or national origin and shall be in accordance with Policy goals 3, 4 and 6.

Rules governing Public Use

1. No refuse or litter shall be placed on District lands. The individual responsible for placing any refuse or litter on District lands shall be responsible for its removal. The District after requesting the responsible individual to remove the refuse or litter, shall have the option of removing same at the expense of the responsible individual.

2. Construction activities on District lands are prohibited, except by special permit issued by the District. Construction activities include, but are not limited to, removal or destruction of vegetation or grading of the earth.

3. Destruction, defacement or removal of any vegetation or soil (includes sand, rock, minerals, etc.) on or from District property is prohibited

4. Destruction, excavation, defacement, removal or disturbance of archaeological or historical sites, monuments, graves or boundary markers, material or artifacts is prohibited.

F. Use of District lands or waters within the Wells Project boundary other than public use shall require a permit.

Rules governing permits

1. Application for permits shall be submitted to Public Utility District No. 1 of Douglas County, 1151 Valley Mall Parkway, East Wenatchee, WA 98802-4497. Permit applications will be reviewed by the District to ensure compliance with the FERC License provisions for the Wells Hydroelectric Project or applicable Federal or state statutes for the electrical or water distribution systems. Decisions may be appealed to the District's Commission. All Permits will be in writing and must be approved by the District Board of Commissioners.

2. Permits on Wells Project lands will be issued only if the proposed use and occupancy meets the requirements of the FERC license and considers protection of the environmental, scenic, historic, cultural or recreational values of the land. Permits are non-transferable and expire upon the sale or transfer of title or subdivision of subject or adjacent land. All permits will expire upon expiration of the Wells Project FERC License on May 31, 2012 at 11:59 PM. Upon sale or transfer of adjacent lands or termination of a permit, the District will re-evaluate the use of the associated project land to determine the best use of said lands for the future. A permit fee schedule, which may be amended from time to time, will be established by the District's Board of Commissioners

3. The lands on which use and occupancy permits are issued must be maintained in accordance with good agricultural practices by permittee and must comply with all applicable federal and state laws, including the Federal Power Act and specifically FERC License 2149. The use of the lands permitted shall not endanger health, create a public nuisance or otherwise be incompatible with overall project purpose.

4. Failure to adhere to conditions of the permit may result in cancellation of the permit and/or legal action. Non-permitted use of District lands or waters other than public use, as outlined in Section E hereof, may result in legal action or refusal of a request for permit.

5. The District will monitor the uses and occupancies granted by the permit and shall take remedial action when non-compliance is discovered. The District reserves the right to cancel the permit and to require removal of any structure, facility or agricultural crop located on project lands, at permittee expense, IF:

- a. permittee fails to comply with the terms and conditions of the permit.
- b. permittee interferes with the District's operation of any hydroelectric or electric or water distribution facility.
- c. continued use or occupancy is incompatible with any new conditions or terms imposed by the Federal Energy Regulatory Commission.
- d. continued use or occupancy is incompatible with changes in use of surrounding and/or adjacent lands.

6. Permits approved by the District's Board of Commissioners, will be issued by the Supervisor of Property. Before granting a permit the Chief of Environmental and Regulatory Services, after consulting the Chief Engineer for the Wells Hydroelectric Project or the Distribution System Superintendent (depending upon the particular lands involved) must certify that the permit is in the best interest of the District and will not adversely affect any current or future District operations. The Supervisor of Property will maintain files containing documents and correspondence relating to permits, leases, easements and sales of District lands.

7. The District shall retain fee simple ownership and possession of all District lands that are subject to franchise, easements, water rights, permits and rights of occupancy and use.

8. An annual report to the commission will be prepared by the Supervisor of Property showing all permits, easements, leases, sales and purchases of District land. Annually, the Supervisor of Property will review District lands to determine if there are any lands surplus to the District. These surplus lands will be sold at public sale in order to return them to the tax roles.

G. The Supervisor of Property will be responsible for the acquisition of all District property. The Supervisor of Property will provide a written recommendation for purchase, to the Manager of the District for his approval and submittal to the Board of Commissioners. The Supervisor of Property's recommendation will require the approval of the Chief Engineer for the Wells Project or the Distribution System Superintendent (dependent upon lands involved) and the Chief of Environmental and Regulatory Services.

A condemnation proceeding will only be initiated after an attempt at reasonable negotiations or in the event clear title cannot be secured.

H. The District may choose to meet land management objectives through construction of fences or other approved barriers on District lands. Fencing or barriers may be used to assure protection of shoreline riparian and wetland habitat, control public access to sensitive wildlife, cultural or historic areas or to limit access to District facilities that may represent a danger to the public. Private individuals may NOT construct fences on District property unless provided by a District issued permit.

APPENDIX E
PUD NO. 1 DOUGLAS COUNTY PARK SURVEY DATA
FROM FERC FORM 80

Parks Survey - Wells Overlook

Date	Time	Initials	Number of Park Users at...					Number of...				Remarks - Weather, etc.		
			Picnic Area	Swimming Area	Trails/Walks	Playground	Parking Lot	Boats/Canoes	RVs/Tents	Fishermen	Cars			
June 21 2002	9:40	MC	3		0		5						7	repair post
June 21 2002	14:15	MC	0		0		6						2	
June 27 2002	11:15	MC	0		0		0						0	
June 27 2002	14:30	JMH	0		0		2						2	
July 11 2002	10:30	MC	2		0		1						3	
July 18 2002	10:00	MC	0		0		3						2	
July 18 2002	12:40	JMH	0		0		3			1/0			2	
July 26 2002	16:00	MC	0		0		3						2	
July 31 2002	9:22	JMH	0		0		2						2	
August 7 2002	11:00	MC	0		4		0						1	graffiti on walls in bathroom
August 7 2002	14:24	MC	0		0		0						0	
August 24 2002	10:12	JMH	0		0		2					1	0	

Parks Survey - Methow River Parking Lots

Date	Time	Initials	Number of Park Users at...				Parking Lot	Number of...					
			Picnic Area	Swimming Area	Trails/Walks	Playground		Boats/Canoes	RVs/Tents	Fishermen	Cars		
June 21 2002	10:40	MC					1						
June 27 2002	11:25	MC					1		1				3
July 11 2002	10:45	MC					0		2				8
July 18 2002	10:10	MC					2						9
July 31 2002	9:33	JMH					0		0				0
August 7 2002	11:11	MC					4	1	2	2	2 (in boat)		2
August 7 2002	14:13	MC					11		2				4
August 24 2002	10:23	JMH					0	0	0	0	0	0	0

Remarks - Weather, etc.

river rafters - buses waiting in parking lot

APPENDIX F
LETTERS/COMMENTS FROM AGENCIES AND STAKEHOLDERS

Interagency Committee for Outdoor Recreation

360/902-3000
360/902-3026 (fax)
email: info@iac.wa.gov



STATE OF WASHINGTON

Salmon Recovery Funding Board ^{6B} _{file}

360/902-2638
360/902-3026 (fax)
email: salmon@iac.wa.gov

OFFICE OF THE INTERAGENCY COMMITTEE
1111 Washington Street SE
PO Box 40917
Olympia, WA 98504-0917

NOTED
NOV 25 2002
G. K. BRETT

November 21, 2002

Mr. Gordon Brett
Property Supervisor
Public Utility District No. 1 of Douglas County
1151 Valley Mall Parkway
East Wenatchee, WA 98802-4497

Dear Mr. Brett: *Gordon*

Subject: Comments, Draft Recreation Plan Update 2002

Thank you for sending us a copy of the draft recreation plan update. As you know from our record of participation in your planning efforts, we value the contribution the District makes to much-needed recreation sites and facilities in Washington State.

Based on our review of the draft, we suggest amending the discussion of the state comprehensive outdoor recreation plan (SCORP) found on pages 16 through 18. Our most recent SCORP document is *An Assessment of Outdoor Recreation in Washington State*. The *Assessment* has been approved as Washington's SCORP by the National Park Service, beginning in October 2002 and extending through October 2007.

IAC has filed the *Assessment* with the Federal Energy Regulatory Commission (FERC). FERC has accepted the *Assessment* as a replacement for our previous SCORP and has qualified the *Assessment* as a comprehensive plan under Section 10(a)(2)(A) of the Federal Power Act (letter to IAC dated November 4, 2002 from Edward A. Abrams, Chief, Hydro East Branch 2). A copy of the *Assessment* is enclosed for your use.

The statement on page 16 the draft recreation plan that "SCORP does not provide project-specific recommendations" remains accurate. However, the current SCORP (the *Assessment*) does make recommendations to local

RECEIVED

NOV 25 2002

DOUGLAS PUD

Mr. Gordon Brett
November 21, 2002
Page 2

agencies and utilities that operate non-federal hydropower projects under license from the Federal Energy Regulatory Commission. The recommendations are found on page 62, and include the following:

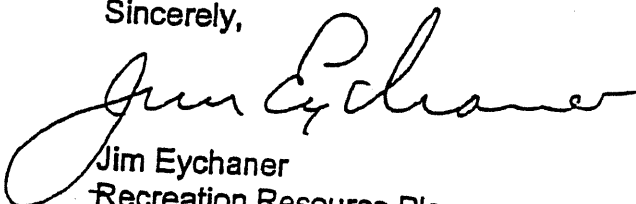
IAC recommends that non-federal hydropower project managers enhance inventory with trails and paths for walking and bicycling, manage dispersed shoreline camping, improve access for on-water recreation, and improve opportunities for nonconsumptive interaction with nature including fish and wildlife. In instances where the license holder has provided recreation land or facilities to other agencies, IAC recommends that the license holder also provide maintenance and operation assistance.

To help improve the accuracy of the District's draft recreation plan, we recommend either replacing or augmenting Table 2, page 17, in the draft with graphs and tables from pages 6, 7, and 8 of the IAC *Assessment*, as these graphs and tables depict our most current statewide data.

In addition, we encourage you to consider the information found in our draft technical report *Estimates of Future Participation in Outdoor Recreation in Washington State*. A copy is enclosed. Based on the data found in the SCORP, the draft technical report may provide some guidance for future actions.

Thank you for the opportunity to comment. We look forward to continued cooperation with the District on recreation issues.

Sincerely,


Jim Eychaner
Recreation Resource Planner



STATE OF WASHINGTON
 WASHINGTON STATE PARKS AND RECREATION COMMISSION
 EASTERN REGION HEADQUARTERS • OPERATIONS DIVISION
 2201 N. Duncan Drive • Wenatchee, Washington 98801-1007
 Phone (509) 662-0420 • Fax (509) 663-9754

6
 fu

NOTED

NOV 25 2002

G. K. BRETT

November 21, 2002

Mr. Gordon Brett
 Public Utility District No. 1 of Douglas County
 1151 Valley Mall Parkway
 East Wenatchee, WA 98802-4497

Re: Recreation Action Plan Update Response, 2002

Dear Mr. Brett,

Thank you for the opportunity to comment on the *Draft Recreation Action Plan Update, 2002*. We support the document as written.

Sincerely,

Jim Harris
 Eastern Region Manager

RECEIVED

NOV 22 2002

DOUGLAS PUD





Washington State
Department of Transportation
Douglas B. MacDonald
Secretary of Transportation

North Central Region
Office of Region Administrator
P.O. Box 98
Wenatchee, WA 98807-0098

509-667-3000
Fax 509-667-2940
TTY: 1-800-833-6388
www.wsdot.wa.gov

November 27, 2002

Public Utility District
No 1 of Douglas County
1151 Valley Mall Parkway
East Wenatchee WA 98801

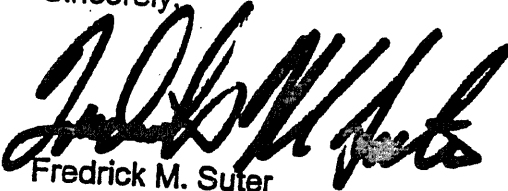
Attention: Mr. Gordon Brett, Property Supervisor.

Re: Recreation Action Plan 2002 Update, supplement the 1982 Public Use Plan,
FERC Project. No. 2149.

Thank you for the opportunity to review and comment on the plan update. We believe the improvements listed for Starr and Wells Dam intersections will preserve the operational integrity and improve safety for the traveling public in this corridor of US-97.

We are looking forward to completing these projects. Please contact Mr. Michael Andreini P. E. of our office at 509.667.2909, for assistance. Feel free to contact me at 6672.2906 if you have any questions or need additional information

Sincerely,


Fredrick M. Suter
Transportation Planner

FMS:fms
file:g:planning:counties:Douglas:PUD#1recplan2002.doc

RECEIVED
NOV 29 2002
DOUGLAS PUD

G
fu

City of Bridgeport

P.O. Box 640
Bridgeport, Washington 98813
Phone (509) 686-4041

68
NOTED
DEC 09 2002
G. K. BRETT

December 04, 2002

Public Utility District No. 1 of Douglas County
1151 Valley Mall Parkway
East Wenatchee, Wa. 98802-7191

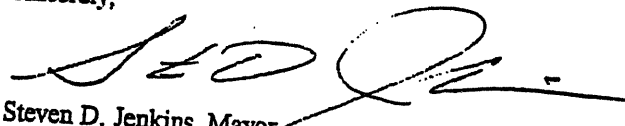
Re: Recreation Action Plan Draft

Dear Sir:

The City has reviewed your proposed plan for your 2002 update, and we concur with your plans for the Marina Park. Your plan is in line with our risk managers request for public safety and liability issues, as well, it enhances the public use of the waterways for our swim area.

The City supports your effort to enhance the Park and we greatly appreciate the partnership that you have extended to the City. Please contact me if we can be of further assistance.

Sincerely,



Steven D. Jenkins, Mayor

RECEIVED
DEC 09 2002
DOUGLAS PUD



City of Brewster

105 South 3rd. Street • Brewster, Washington 98812

P.O. Box 340

Business 509/689-3464

Fax 509/689-3705

email brewster@kazi.com

December 12, 2002

NOTED
DEC 13 2002
G. K. BRETT

Gordon Brett, Property Supervisor
Douglas County PUD #1
1151 Valley Mall Parkway
East Wenatchee, WA 98802-4497

Dear Mr. Brett,

The Brewster City Council met on December 11, 2002 to consider our response to the 2002 update of the Recreation Action Plan. Please consider the following:

1. The City of Brewster suggests more face-to-face meetings with the Douglas County PUD and other affected communities to give our priorities.
2. We feel the Recreation Action Plan should reflect the wants and needs of the communities, not the Douglas County PUD.
3. The plan refers to an implementation date in approximately 10 years; due to the poor economic conditions in our area, we highly recommend that the PUD implement any upgrades as soon as possible.
4. The City could have used at least 4 more copies of the draft plan.
5. The City of Brewster also concurs with the comments submitted by the City of Pateros on December 2, 2002.

Please contact me or the Public Works Director, Mike Shenyer, at 689-3464 if you require further information.

Sincerely,

Bonnie House
Mayor

CITY OF PATEROS

113 Lakeshore Drive
PO Box 8
Pateros, WA 98846
509 923 2571
FAX 509 923 2971
e-mail: pateros@nwi.net

December 2, 2002

Attn: Gordon Brett, Property Supervisor
Douglas County P.U.D. #1
1151 Valley Mall Parkway
East Wenatchee, WA 98802-4497

NOTED
DEC 03 2002
G. K. BRETT

Dear Mr. Brett:

Subsequent to a meeting between you and Councilman George Brady, the Pateros City Council has met and considered our response to the 2002 update of the Recreation Action Plan. Included are detailed comments for your review, but our major points are as follows:

1. We would like the plan not finalized until we have more opportunity to discuss with the Douglas County PUD the elements of our proposals that we consider essential and that were not addressed in the draft plan (i.e. stage, operation and maintenance funding, etc.).
2. It is felt that the PUD's definition of "water-based recreation" is erroneous and should be redefined, since District projects do not abide by the definition.
3. With the removal of Chief Joseph State Park from the plan, we suggest that the PUD begin discussions with the affected entities to replace this major recreation component within the immediate Wells pool.
4. The statistical comparisons used in the report are biased, and other comparisons are more appropriate.

5. We think that representatives from all three communities should be involved in the planning process. By utilizing joint meetings, it would be a more productive use of the District's and the city representative's time.

Please feel free to contact me at 509.923.2571 if you need further information.

Sincerely,

Gail A. Howe

Gail A. Howe
Mayor

enclosure

Comments on Recreation Plan Update 2002

Section 1

Plan should consult more the IAC, Okanogan County and State Tourism and Economic Development organizations and should involve more meetings and planning with the affected cities.

Section 1.2

National Park Service should not be the lead agency on planning recreational use on the Wells pool

Section 1.3

The need versus demand trend misses significant opportunities and compares non-similar parks.

Section 3.1

Note should be made that Fort Okanogan museum is currently closed.

Table 1

What is the percent of Douglas County PUD revenue spent on recreation? How does that compare with other PUDs?

Table 2

Table 2 does not provide information that is relevant to the report or the PUD.

State Parks day use is sure to plummet with the increased day use fee, while the use of "free" parks like Pateros is likely to increase significantly (no mention of State Parks fee increase in plan).

Section 4.2

Consultation not adequate at local level. We would be happy to meet with the consultant several more times and in fact expect to.

The PUD has never suggested that the towns gather more use information nor have they suggested there was a need for that information.

No information was provided on the loss of recreation due to the collapse of the development plan (which was promised since at least 1967), nor what were the possible remedies for the loss.

Section 4.4

Current use data fails to address development that would increase usage, lack of available sites on SR97, or comparisons with Chelan PUD sites downstream.

Boat recreation is hampered by the lack of passage at Chief Joe and Wells for movement up and down river, but no discussion is provided about solving that problem. Also, current dock design is not boater friendly.

Day Use Facilities

Addition of a stage in Pateros would dramatically increase usage, removal of the historical buildings, trees and businesses severely impacted recreation within Pateros.

Section 5

Water based activity is too limiting a definition for use on the Wells pool, while other data discussed contained non-water based recreation.

Removal of Chief Joe State Park should be replaced with other parks or significant improvements to existing parks located on the Wells pool, which would create far less environmental impacts.

In general, the proposed PUD projects are far too modest in scope. The draft plan fails to address our proposal for a stage; does not discuss our signage needs; does not discuss the need for RV parking; does not discuss steelhead fishing and the additional use of parks, docks and restrooms; and completely ignores the need for operating and maintenance funding for the three cities.

There is no schedule for construction for the projects that were approved, so we can not plan around when improvements will occur.

The turnout at the boat launch just north of Wells Dam is a major expense and has little to do with recreation, but is included in the plan. This area is mostly an outhouse and garbage dumpster.

APPENDIX G
IAC SCORP GRAPHS AND TABLES AND ESTIMATE OF FUTURE
PARTICIPATING IN OUTDOOR RECREATION
IN WASHINGTON STATE

Chapter 2. Participation

Statewide Survey

To measure participation, IAC contracted for the design and implementation of a statewide outdoor recreation participation survey. The survey was designed in 1999, in cooperation with an advisory team of recreation professionals from across the state. The survey was performed by an independent survey firm in 1999 and 2000. Over 1,500 people across Washington State were recruited on a random basis to fill out diary-based forms to keep track of activities for a calendar year.³

The survey results reflect *actual behavior*, and not *preferences*. Also, the complex nature of the study design limited the ability to collect site-specific activity data. Overall, however, the results of the survey are statistically reliable and form the basis for this discussion of participation.⁴

A randomly-selected statewide panel was asked to report on activities in 15 general categories, and on specific activities within the categories.

The major categories were:

1. Sightseeing
2. Nature activities (bird watching, gardening, etc.)
3. Fishing
4. Picnicking
5. Water activities (boating, swimming, etc.)
6. Snow/ice activities (skiing, skating, snowboarding, snowmobiling)
7. Air activities (flying, parachuting, bungee jumping, etc.)
8. Walking and hiking
9. Bicycle riding for recreation
10. Equestrian activities
11. Off-road vehicle driving for recreation
12. Camping
13. Hunting and shooting
14. Team and individual sports
15. Indoor recreational activities (used for comparison purposes)

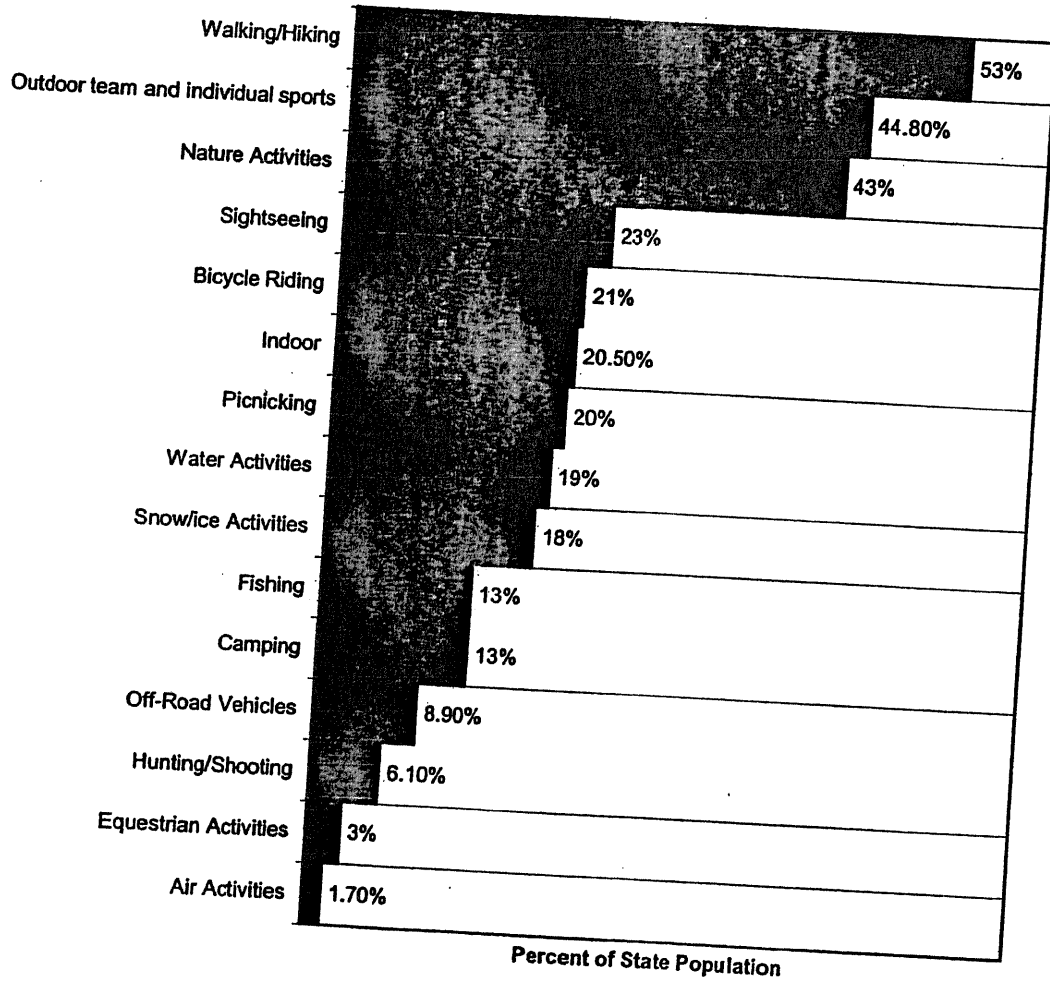
³ A technical description of the survey methodology is found in Appendix 2.

⁴ For the purposes of Land and Water Conservation Fund rules, this *Assessment* considers participation as "demand."

Overall Results

The survey revealed an active population pursuing close-to-home, low cost activities. Most people engage in multiple activities that cross categories. The following table depicts overall participation in general recreation categories.⁵

**Participation in General Recreation Categories
As a Percent of State Population**



⁵ Unless otherwise noted, all data presented in charts and graphs are from Beckwith Associates Statewide Outdoor Recreation Participation Assessment, January 2001.

Looking at activities in more detail, the survey produced a list of 170 recreation activities ranked in order of estimated raw numbers of participants.⁶ The top 20 activities are depicted in the following table.

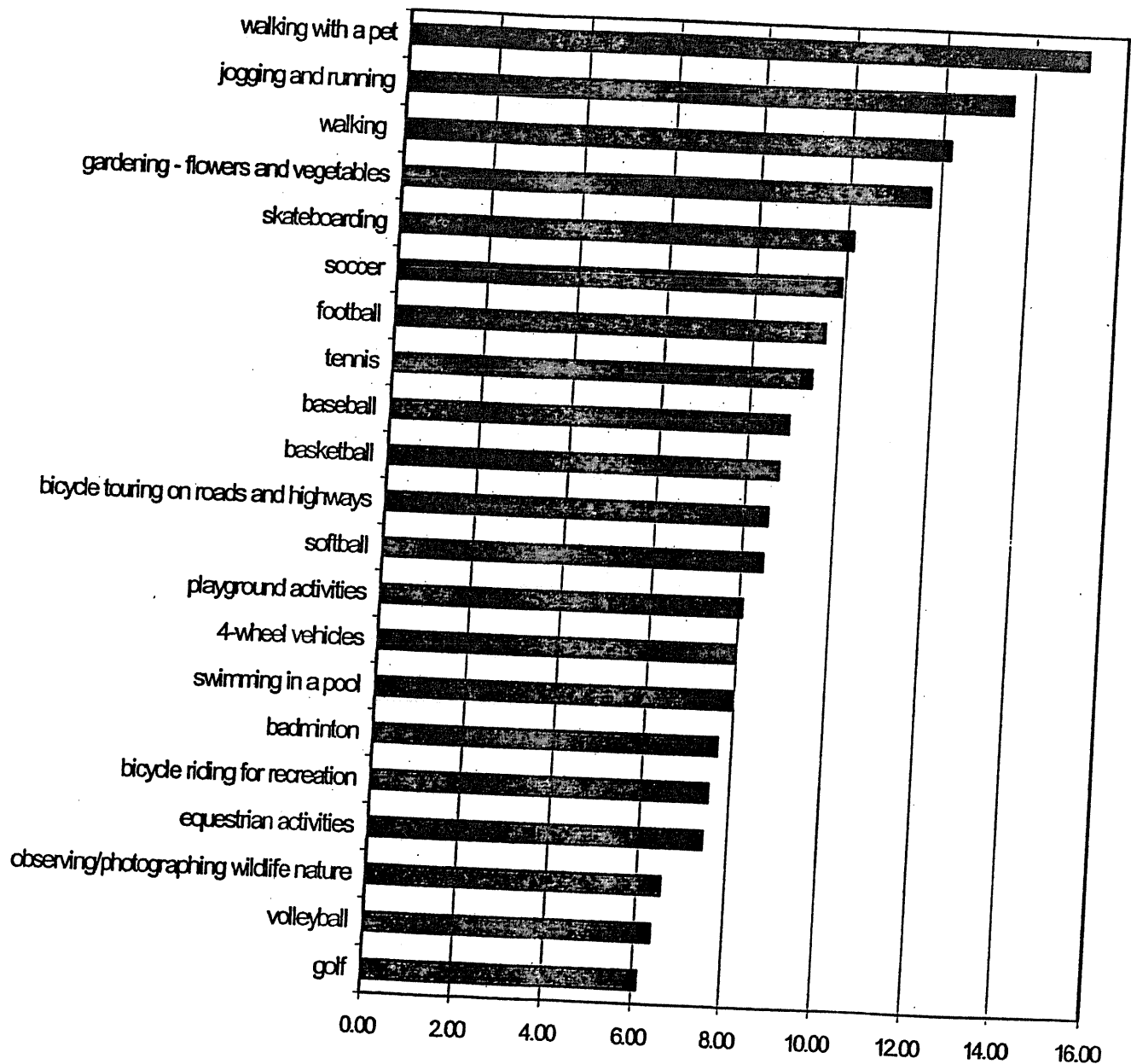
Activity	By type or location	Estimated Number of participants (rounded)*
Bicycling	On roads and streets	790,000
Gardening	Backyard	723,000
Walking	On sidewalks	649,000
Walking	On roads and streets	609,000
Sightseeing	Scenic areas	587,000
Walking with a pet	Undesignated site or location	547,000
Indoor	Social events	543,000
Picnicking	Undesignated site	525,000
Picnicking	Designated picnic tables	459,000
Walking	In a park/trail setting	448,000
Sightseeing	Cultural/historical	433,000
Observing/photographing nature	Birds	373,000
Sightseeing	Public facility	356,000
Walking with a pet	On-leash in a park	321,000
Observing/photographing nature	Animals	304,000
Sledding/tubing/snow play	Snow-ice settings	291,000
Walking (day hiking)	Mountain and forest trails	279,000
Playground activities	At a park	276,000
Indoor	Activity center uses	273,000
Beachcombing	Shore areas	271,000

* Estimate based on Beckwith Associates statewide assessment, with a margin of error of +/-5%, and Office of Financial Management population estimates for 2000.

⁶ The complete list is included in Appendix 1.

Yet another measure of outdoor recreation is frequency: that is, how many times per year, as a statewide average, respondents participate in major activities:

Major Outdoor Activities: Average Events Per Year, All Ages



Looking at the data in 3 different ways – overall participation, number of people per specific activity, and frequency – *linear* activities, but especially walking and bicycle riding, emerge as the highest participation activities.